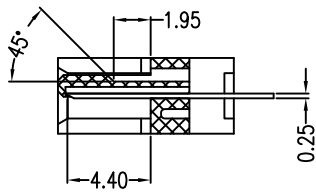
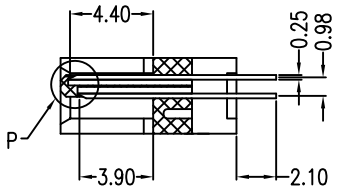
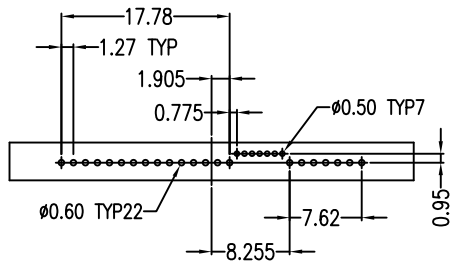
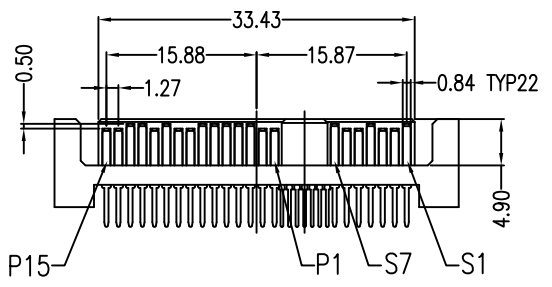


VIEW O
SCALE 3:1

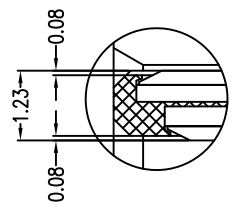


SECT A-A
SCALE 2:1

SECT B-B
SCALE 2:1



PCB LAYOUT
TOP VIEW



VIEW P
SCALE 6:1

NOTES:

***Material**
 Housing: LCP, UL 94V-0 rated, Color: Black;
 Contact: Brass;
 Plating: Gold plating over Nickel on contact area; Tin plating on solder tail.

***Mechanical**
 Insertion Force: 25N max.
 Withdrawal Force: 5N min.
 Durability: 500 cycles

***Electrical Specification**
 Current Rating: 1 Ampere per contact;
 Contact Resistance: 30 Milliohms max.
 Insulation Resistance: 1000 megohms min.
 Dielectric Withstanding Voltage: 500 V AC.

***Environmental**
 Operating Temperature: 0°C to +55°C

RoHS Compliant

TOLERANCES ARE

MORETHANALL
 PCB CONNECTORS
 Cable ASSEMBLIES

DRAWING BY CY

X, ±

CHECKED BY GENIUS

.X ±

UNIT / mm

SCALE 1:1

.XX ±

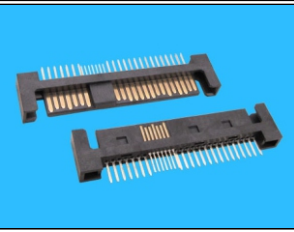
DATE

.XXX ±

SIZE A4

PPOJECTION

ANG ±



ORDER INFORMATION

SAS-PD-29-LF
 SERIES | LEADFREE
 29 WAY
 DIP 180°
 MALE

煜倫股份有限公司

www.morethanall.com

DESCRIPTION: SAS 29P Standard Type(180°) Male