

P.C.B. LAYOUT

SPECIFICATIONS

V₀ CURRENT RATING: 3A AC,DC

VOLTAGE RATING: 250V AC,DC

TEMPERATURE RANGE: -25°C ~ +85°C
(INCLUDING TEMPERATURE RISE)

INSULATION RESISTANCE: 1,000M MIN.

WITHSTAND VOLTAGE: 800V AC/MINUTE

APPLICABLE WIRES: AWG #28 ~ #22

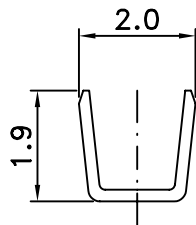
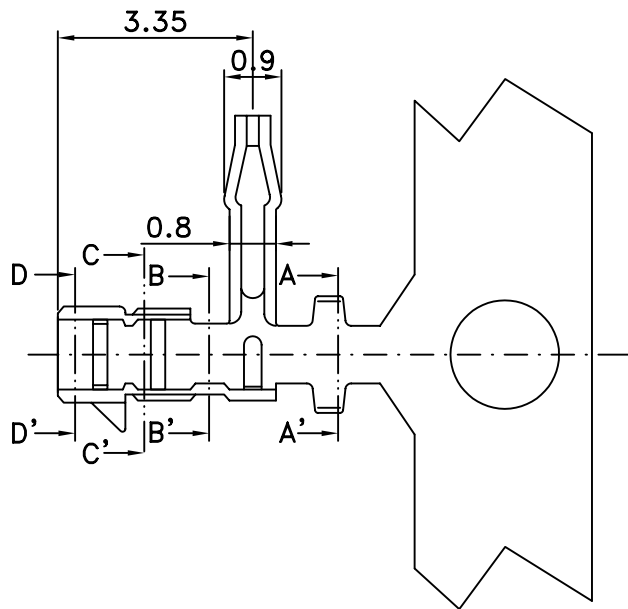
APPLICABLE PC BOARD THICKNESS

SHAPE A CONTACT:.047(1.2)

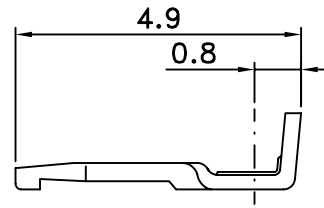
MATERIAL AND FINISH:

HOUSING:NYLON 66 UL94V-0

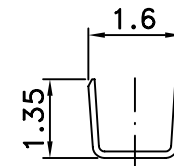
CONTACTS:PHOSPHOR BRONZE,TIN PLATING



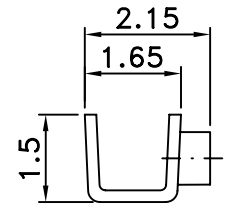
SECTION A-A'



SECTION B-B'



SECTION C-C'



SECTION D-D'

RoHS Compliant

TOLERANCES ARE

MORETHANALL
PCB CONNECTORS
Cable ASSEMBLIES

煜倫股份有限公司

www.morethanall.com

DRAWING BY CY

CHECKED BY GENIUS

UNIT / mm

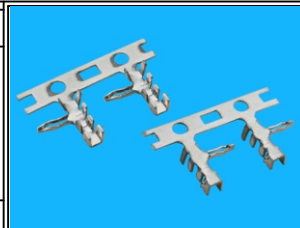
SCALE 1 : 1

DATE

SIZE A4

PPOJECTION

X.±
.X±
.XX±
.XXX±
ANG±



ORDER INFORMATION

SAR-T-22-LF
SERIES | LEADFREE
22-28 AWG
TERMINAL

DESCRIPTION: