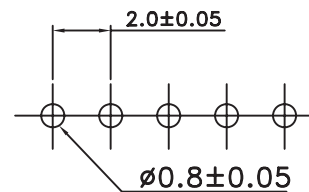


1310T



P.C.B. LAYOUT

SPECIFICATIONS

CURRENT RATING: 3A AC,DC

VOLTAGE RATING: 250V AC,DC

TEMPERATURE RANGE: -25°C ~ +85°C

(INCLUDING TEMPERATURE RISE)

INSULATION RESISTANCE: 1,000M MIN.

WITHSTAND VOLTAGE: 800V AC/MINUTE

APPLICABLE WIRES: AWG #28 ~ #22

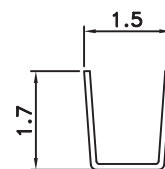
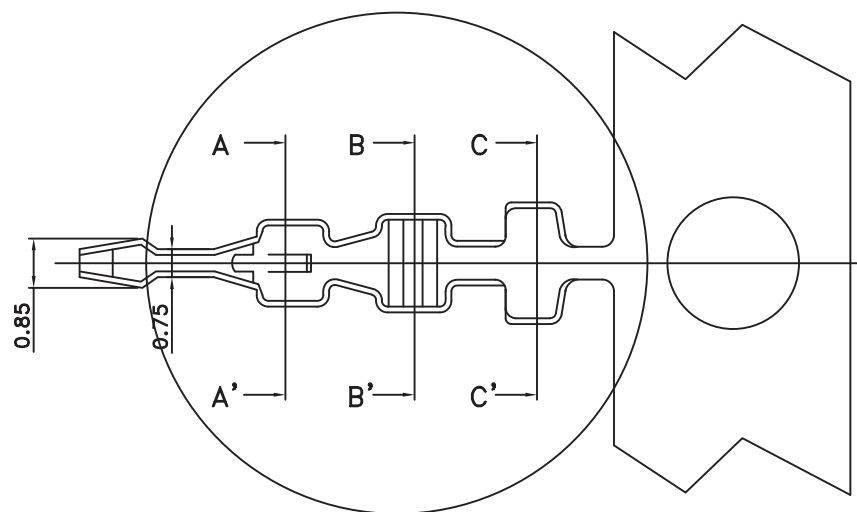
APPLICABLE PC BOARD THICKNESS

SHAPE A CONTACT: .047(1.2)

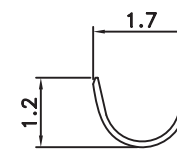
MATERIAL AND FINISH:

HOUSING: NYLON 66 UL94V-0

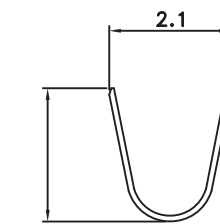
CONTACTS: PHOSPHOR BRONZE, TIN PLATING



SECTION A-A'



SECTION B-B'



SECTION C-C'

MORETHANALL
PCB CONNECTORS
Cable ASSEMBLIES

煜倫股份有限公司

www.morethanall.com

RoHS Compliant

DRAWING BY CY

CHECKED BY GENIUS

UNIT/mm

SCALE 1:1

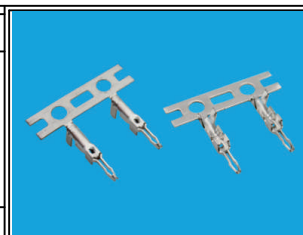
DATE

SIZE A4

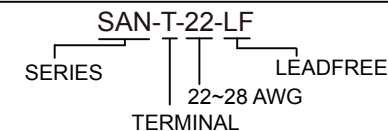
P PROJECTION

TOLERANCES ARE

X. ±
.X ± 0.20
.XX ± 0.15
.XXX ±
ANG ±



ORDER INFORMATION



DESCRIPTION: 2.0MM TERMINAL