

1 2 3 4 5 6 7 8 9 0

J

I

H

G

F

E

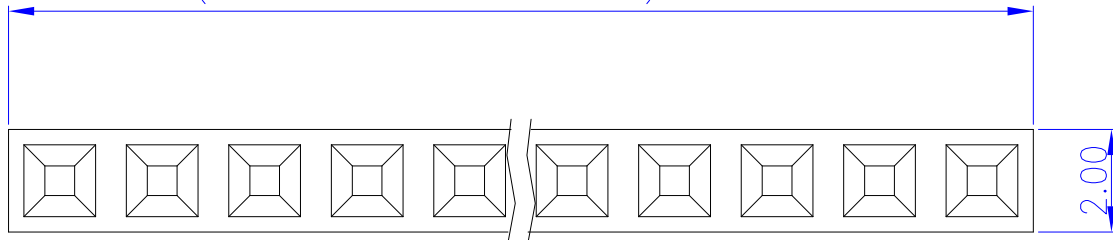
D

C

B

A

(No. of Positions Per Row)\*2.00±0.30



**Material and Finish**

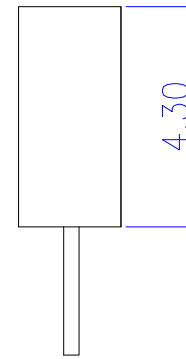
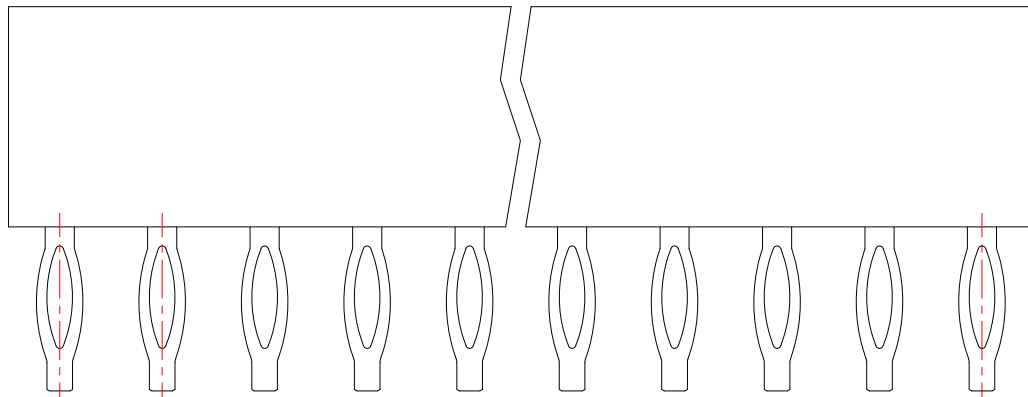
1. Housing: PBT (UL94V-0), Black.
2. Terminal: Copper Alloy (t=0.30mm), Gold Plating.

**Electrical Characteristics**

1. Current Rating: 1.0 Amp. Max..
2. Dielectric Withstand Voltage: 800V AC RMS for 60Seconds.
3. Insulation Resistance: 1000M Ohms Min. at 500V DC.
4. Connect Resistance: 30m Ohms Maximum.

**Mechanical Characteristics**

1. Operating Temperature: -55°C ~ +105°C



2.00

(No. of Positions Per Row-1)\*2.00±0.20

S-P43-1Xxx-LF  
LEADFREE  
RoHS Compliant

**MORETHANALL**  
CONNECTORS  
ASSEMBLIES

煜倫股份有限公司

PART NO. S-P43-1Xxx		CHECKED BY CY	TOLERANCES ARE .X ± 0.2 .XX ± .XXX ± AWG	DESCRIP TION: 2.00mm Post Header Receptacle PCB Mount - Press Fit Single Row (H=4.30mm)			
DWG NO. S-P43-1Xxx							
FILE NO.		DRAWING BY	PROJECTION	AREA	REVISIONS	HK	DATE
UNIT / mm	SCALE 1:1						