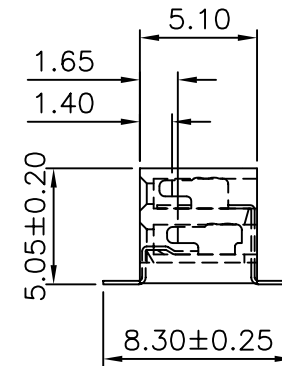


Specifications

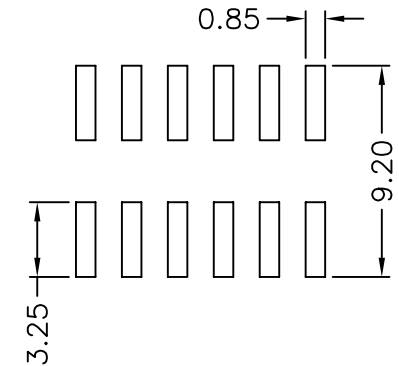
Current Rating: 2Amp
 Insulation Resistance: 1000MΩ Min.
 Dielectric Withstanding: 500V AC/DC
 Contact Resistance: 20mΩ Max.
 Operating Temperature: -40°C to +105°C

Materials

Contact Material: Phosphor Bronze
 Insulation Material: Polyester, UL 94V-0
 NYLON-6T



RECOMMENDED P.C.B LAYOUT



RoHS Compliant

TOLERANCES ARE

MORETHANALL
 PCB CONNECTORS
 Cable ASSEMBLIES

煜倫股份有限公司

www.morethanall.com

DRAWING BY CY

CHECKED BY GENIUS

UNIT / mm

SCALE 1:1

DATE

SIZE A4

PJECTION

X.±
 .X±
 .XX±
 .XXX±
 ANG±

照片框

ORDER INFORMATION

S-MX-2X25-LF
 SERIES LEADFREE
 50 WAY
 NON POST
 SIDE ENTRY SMT

DESCRIPTION: 2.0 FEMALE HEADER DUAL ROWS SMT TYPE SIDE ENTRY