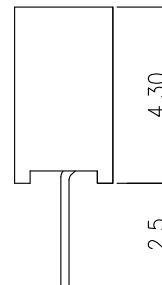
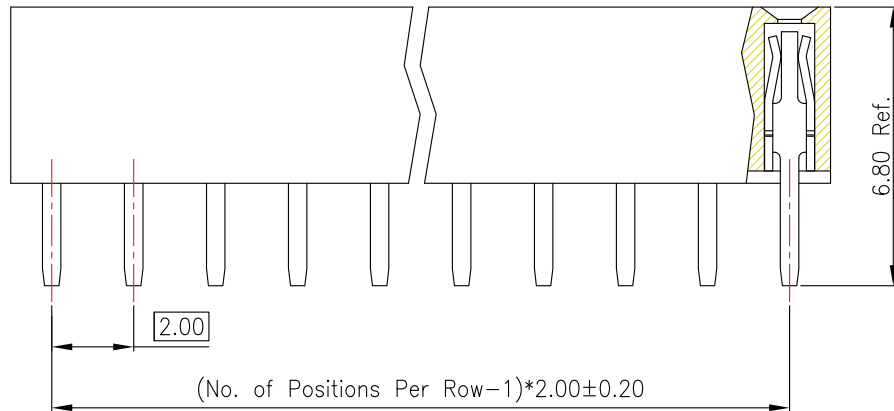


PCB Layout
(Top View)



Material and Finish

1. Housing: Nylon 9T (UL94V-0), Black.
2. Terminal: Copper Alloy (t=0.20mm), Gold Plating.

Electrical Characteristics

1. Current Rating: 1.0 Amp. Max..
2. Dielectric Withstand Voltage:
800V AC RMS for 60Seconds.
3. Insulation Resistance:
1000M Ohms Min. at 500V DC.
4. Connect Resistance: 30m Ohms Maximum.

RoHS Compliant

TOLERANCES ARE



煜倫股份有限公司

www.morethanall.com

DRAWING BY CY

CHECKED BY GENIUS

UNIT / mm

SCALE 1 : 1

DATE

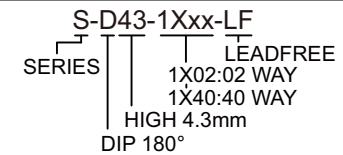
SIZE A4

PPOJECTION

X. ±
.X ±
.XX ±
.XXX ±
ANG ±

照片框

ORDER INFORMATION



DESCRIPTION: No. of Positions Per Row (2-40 Pins)