

Pole on/off illuminated

**ROCKER SWITCH MODEL: R SERIES**

RATING:(1) 16A 125/250VAC (UL/CUL)

(2) 20A 125VAC (UL/CUL)

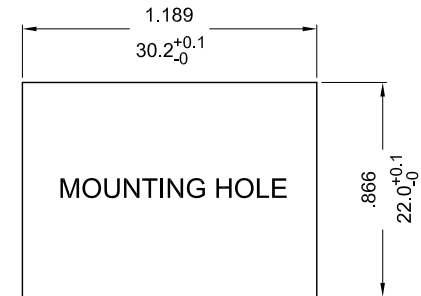
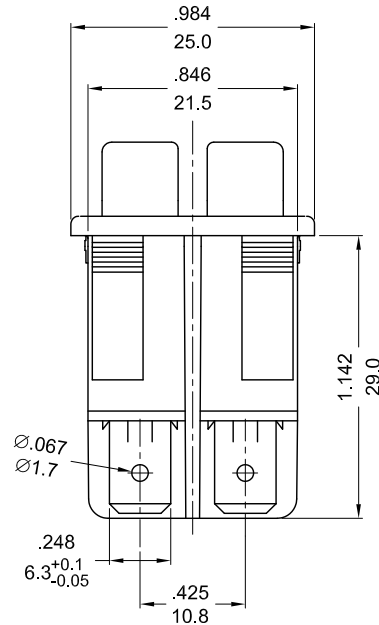
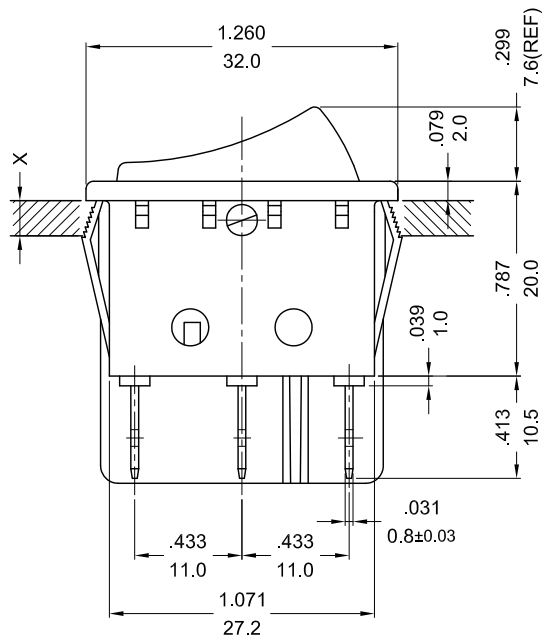
(3) 16(4)A 250V~T125/55 (VDE/ENEC/CQC)

DIELECTRIC WITHSTAND VOLTAGE: 1000VAC 1 MIN

INSULATION RESISTANCE: 500VDC 100MΩ (MIN)

CONTACT RESISTANCE: 20mΩ INITIAL (MAX.)

ILLUMINATED:100~125VAC



X=(0.75 TO 1.25mm)  
PANEL THICKNESS

NOTE: TOLERANCES UNLESS OTHERWISE SPECIFIED:± .012/ 0.3 (in/mm)

RoHS Compliant

TOLERANCES ARE

**MORETHANALL**  
PCB CONNECTORS  
Cable ASSEMBLIES

DRAWING BY CY

X. ± 0.30

CHECKED BY GENIUS

.X ± 0.30

UNIT / mm

SCALE 1 : 1

.XX ± 0.20

DATE

.XXX ± 0.10

ANG ± 1°

SIZE A4

PPOJECTION

照片框

ORDER INFORMATION

RSWA2-Q6RD-03-LF

SERIES

LEADFREE

03 WAY

RED

6.3mm TAB

煜倫股份有限公司

www.morethanall.com

DESCRIPTION: R SPEC DRAWING