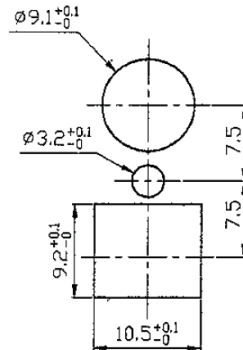
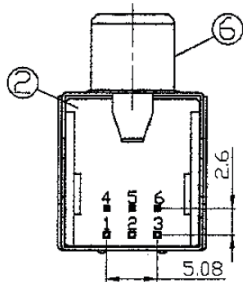
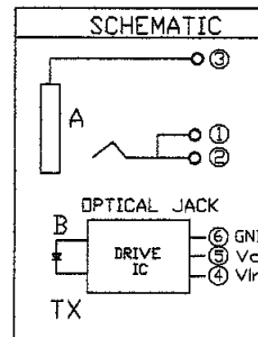


RECOMMENDED PCB LAYOUT (BOTTOM VIEW)
PCB TOLERANCE ± 0.1



RECOMMENDED PANEL CUTOUT



SPECIFICATIONS:

- CONTACT RESISTANCE: 30mΩ MAX
- INSULATION RESISTANCE: 100MΩ MIN. AT DC 500V.
- WITHSTANDING VOLTAGE: 250V AC PER 1 MINUTE
- OPERATING TEMPERATURE: -25°C ~ +70°C
- INSERTION FORCE: RCA: 0.3kg ~5kg
OPTICAL JACK: 3.5kg Max.
- EXTRACTION FORCE: RCA: 0.3kg ~3kg
OPTICAL JACK: 0.4kg Min.
- UNLESS OTHER SPECIFIED, TOLERANCE IS $\pm 0.3\text{mm} \pm 3^\circ$

8.	OPTICAL JACK	1 set		BLACK	Transmitter
7.	WASHER	1	PBT	ORANGE	UL94V-0
6.	RCA BUSHING	1	SPCC T=0.3mm	Ni 80u" over Cu 80u"	
5.	BACK SHELL	1	SPCC T=0.3mm	Ni 80u" over Cu 80u"	
4.	FRONT SHELL	1	SPCC T=0.3mm	Sn 100u" over Ni 50u"	
3.	RCA TERMINAL	3	BRASS T=0.3mm	Sn 100u" over Ni 50u"	
2.	COVER	1	PA66	BLACK	UL94V-0
1.	RCA HOUSING	1	PBT	BLACK	UL94V-0
P/N	PART NAME	Q'TY	MATERIAL	PLATING	REMARKS

RoHS Compliant

TOLERANCES ARE

MORETHANALL
PCB CONNECTORS
Cable ASSEMBLIES

煜倫股份有限公司

www.morethanall.com

DRAWING BY CY

CHECKED BY GENIUS

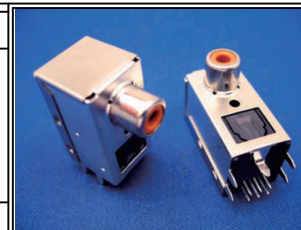
UNIT / mm SCALE 1 : 1

DATE

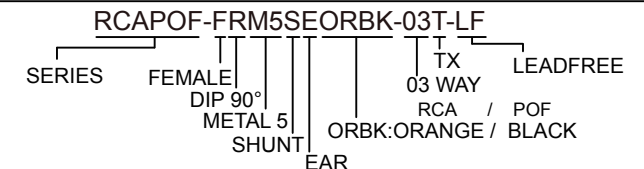
SIZE A4

P PROJECTION

X, ±
X, ±
.XX ±
.XXX ±
ANG ±



ORDER INFORMATION



DESCRIPTION: