

NOTE:

1. MAXIMUM ELECTRICAL RATING: 105 °C 300 VOLTS
2. REINFORCEMENT SLEEVE: C TYPE SLEEVE
3. WIRE RANGE: AWG 22-16/0.5-1.5mm²
INSULATED COLOR: RED
4. WIRE RANGE: AWG 16-14/1.5-2.5mm²
INSULATED COLOR: BLUE
5. WIRE RANGE: AWG 12-10/4-6mm²
INSULATED COLOR: YELLOW

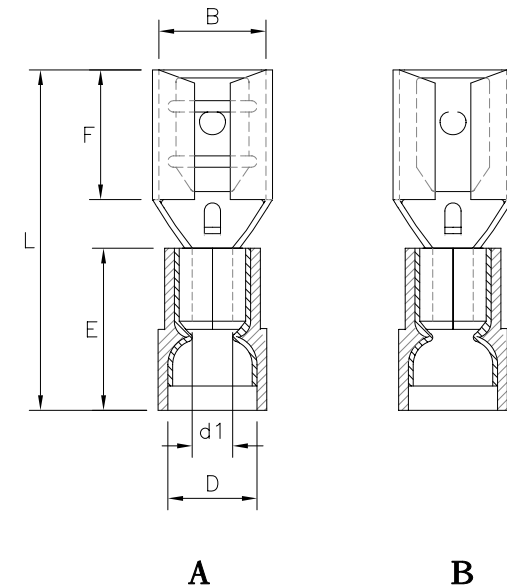
Qxxx-FTxNC-xx-LF
LEADFREE

RoHS Compliant

MAXIMUM ELECTRIC CURRENT

A. W. G	22	20	18	16	14	12	10
MAX AMP	3	4	7	10	15	20	24

WIRE RANGE AWG/mm ²	產品編號 ITEM NO.	NEMA TAB	B ±0.20	F ±0.30	L ±1.00	E ±0.60	D ±0.30	d1 ±0.20
AWG 22-16 0.5-1.5 mm ²	B Q110-FT5NC-16	0.5x2.8	3.2	6.4	19.5	11.0	4.1	1.7
	B Q110-FT8NC-16	0.8x2.8	3.2	6.4	19.5			
	A Q187-FT5NC-16	0.5x4.8	5.0	6.5	20.0			
	A Q187-FT8NC-16	0.8x4.8	5.0	6.5	20.0			
	A Q250-FT8NC-16	0.8x6.4	6.6	7.9	22.0			
	A Q312-FT8NC-16	0.8x8.0	8.4	10.0	25.0			
AWG 16-14 1.5-2.5 mm ²	B Q110-FT5NC-14	0.5x2.8	3.2	6.4	19.5	11.0	4.8	2.3
	B Q110-FT8NC-14	0.8x2.8	3.2	6.4	19.5			
	A Q187-FT5NC-14	0.5x4.8	5.0	6.5	20.0			
	A Q187-FT8NC-14	0.8x4.8	5.0	6.5	20.0			
	A Q250-FT8NC-14	0.8x6.4	6.6	7.9	22.0			
	A Q312-FT8NC-14	0.8x8.0	8.4	10.0	25.0			
AWG 12-10 4-6 mm ²	Q250-FT8NC-10	0.8x6.4	6.6	7.9	24.0	13.0	6.5	3.4
	Q375-FT12NC-10	1.2x9.5	9.9	12.5	29.0			



MORETHANALL
CONNECTORS
ASSEMBLIES

PART NO. Qxxx-FTxNC-xx

DWG NO. Qxxx-FTxNC-xx

FILE NO.

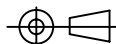
UNIT / mm

SCALE 1:1

CHECKED BY CY

DRAWING BY

PROJECTION



TOLERANCES ARE

.X ± 0.2
.XX ±
.XXX ±
AWG

DESCRIPTION:

AREA

REVISIONS

HK

DATE

煜倫股份有限公司