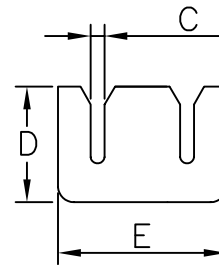
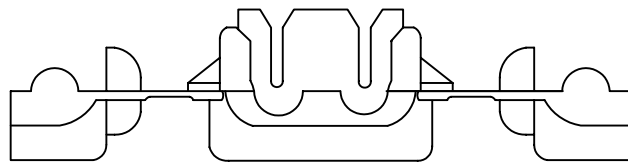


WIRE RANGE: 22-18 A.W.G (0.5-1.0mm<sup>2</sup>)  
 MAXIMUM ELECTRICAL RATING: 105°C 600V OTLS MAX.  
 MAXIMUM ELECTRIC CURRENT: 10 AMPERE  
 TERMINAL MATERIAL: BRASS TIN PL  
 INSULATION MATERIAL: NYLON  
 INSULATION COLOR: RED  
 THICKNESS: 0.8



公差 項目 TOLERANCE ITEM	A±0.5	B±1.0	C±0.05	D±0.1	E±0.1
尺寸 SIZE	18.2	36.0	0.56	6.6	9.6

RoHS Compliant

TOLERANCES ARE

**MORETHANALL**  
 PCB CONNECTORS  
 Cable ASSEMBLIES

煜倫股份有限公司

www.morethanall.com

DRAWING BY CY

CHECKED BY GENIUS

UNIT / mm

SCALE 1:1

DATE

SIZE A4

X. ± 0.30

.X ± 0.30

.XX ± 0.20

.XXX ± 0.10

ANG ± 1°

PPOJECTION

照片框

ORDER INFORMATION

QS-W-18-LF  
 SERIES | LEADFREE  
 18-22 AWG  
 WIRE TO WIRE

DESCRIPTION: