

MATERIAL

INSULATION: NYLON

MATERIAL: BRASS

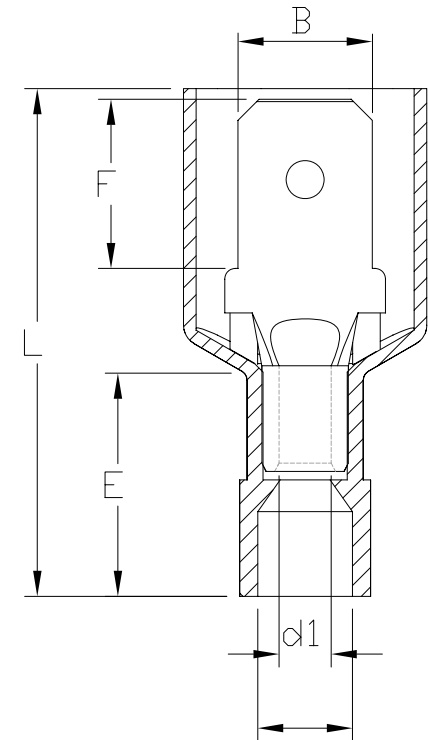
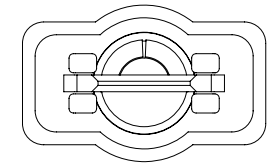
TIN PLATING

MAXIMUM ELECTRIC CURRENT

A. W. G	22	20	18	16	14	12	10
MAX AMP	3	4	7	10	15	20	24

NOTE:

1. MAXIMUM ELECTRICAL RATING: 105°C 300 VOLTS
2. WIRE RANGE: 22-16 AWG / 0.5-1.5 mm²
INSULATED COLOR: RED
3. WIRE RANGE: 16-14 AWG / 1.5-2.5 mm²
INSULATED COLOR: BLUE
4. WIRE RANGE: 12-10 AWG / 4-6 mm²
INSULATED COLOR: YELLOW
5. MATERIAL THICKNESS: t
TOLERANCE: ±0.05



WIRE RANGE AWG/mm ²	產品編號 ITEM NO.	NEMA TAB	B ±0.20	F ±0.30	L ±1.00	E ±0.60	D ±0.50	d1 ±0.20	t
22-16 AWG 0.5-1.5 mm ²	Q250-MT8NFK-16	0.8x6.4	6.35	7.9	24.0	10.5	4.0	1.7	0.8
16-14 AWG 1.5-2.5 mm ²	Q250-MT8NFK-14	0.8x6.4	6.35	7.9	24.0	10.5	4.5	2.3	0.8
12-10 AWG 4-6 mm ²	Q250-MT8NFK-10	0.8x6.4	6.35	7.9	26.5	12.5	6.5	3.4	0.8

MORETHANALL
PCB CONNECTORS
Cable ASSEMBLIES
煜倫股份有限公司

www.morethanall.com

RoHS Compliant

TOLERANCES ARE

DRAWING BY CY

X.±

CHECKED BY GENIUS

.X±

UNIT / mm SCALE 1:1

.XX±

DATE

.XXX±

ANG±

SIZE A4

PJECTION

照片框

ORDER INFORMATION

Q250-MT8NFK-xx-LF
SERIES | | | | | | | | | | LEADFREE
16:~16~22AWG
14:~14~16AWG
10:~10~12AWG
MALE
TERMINAL 0.8mm TAB | K TYPE FULL NYLON

DESCRIPTION: