

产品说明 Product Description:

1.表面处理 Surface treatment :

电镀Sn , Tin plating

2.外观 Appearance:

>30CM距离, <5S目视, 无腐蚀、刮伤、氧化

No corrosion, scratches, oxidation on surface

Inspection condition:

Inspect from >30cm away and for <5 seconds

3.环保: 符合ROHS&REACH

RoHS&REACH compliance: Yes

电线导体规格

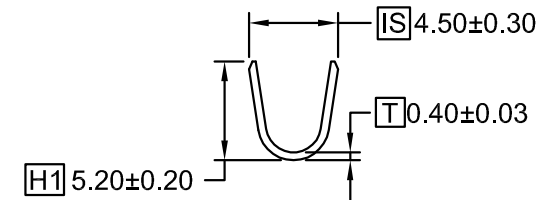
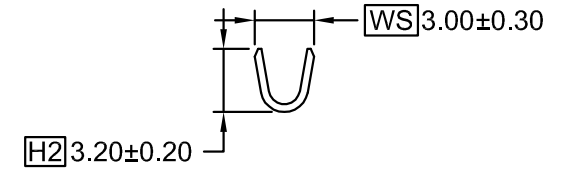
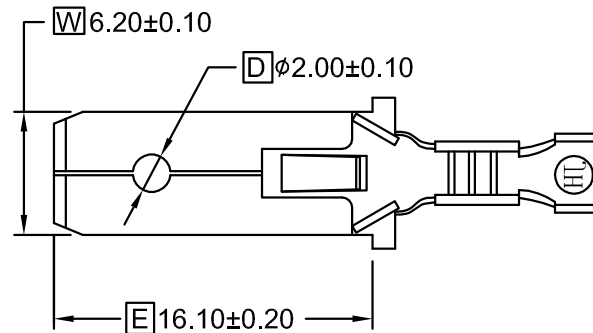
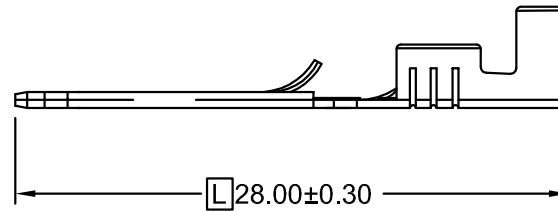
Conductor 16~20AWG

材质

Material 黄铜Brass(C2680)

包装数量

Packing Q' TY 5000Pcs/Reel



RoHS Compliant

TOLERANCES ARE

**MORETHANALL**  
PCB CONNECTORS  
Cable ASSEMBLIES

DRAWING BY CY

CHECKED BY GENIUS

UNIT / mm

SCALE 1 : 1

DATE

SIZE A4

X, ±  
.X ± 0.20  
.XX ± 0.10  
.XXX ± 0.05  
ANG ±

P PROJECTION

照片框

ORDER INFORMATION

Q250-MT8LK-16-LF  
SERIES LEADFREE  
16-20 AWG  
LOCK  
0.8t  
TIN  
MALE

煜倫股份有限公司

www.morethanall.com

DESCRIPTION: