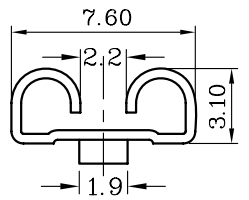
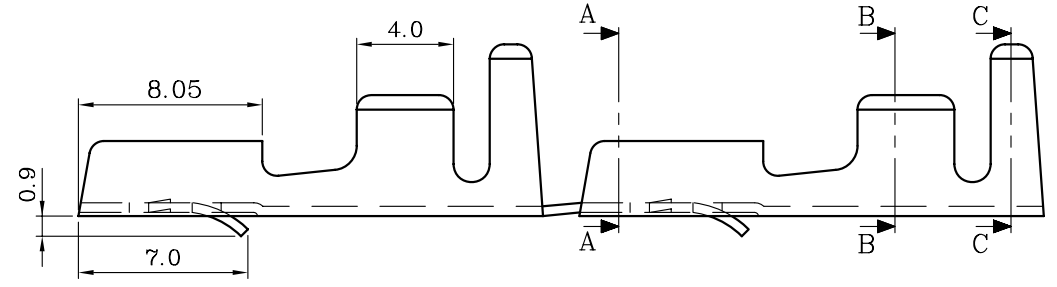
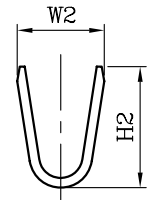


NOTE:  
 1. 表面處理  
 鍍錫 60u以上  
 1.SURFACE TREATMENT:  
 TIN PLATING  
 THICKNESS MORE THAN 60u

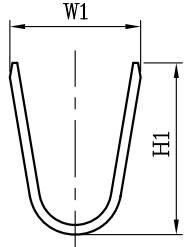
Q250-FxL-xx-LF  
 LEADFREE  
 RoHS Compliant



SEC. A-A



SEC. B-B



SEC. C-C

4000	14~12	4.8	4.7	7.0	6.8	Q250-FTL-12	鍍錫 TIN PLATING
	超高					Q250-FBL-12	素材 NONE
5000	20~14	3.6	3.4	5.1	5.2	Q250-FTL-14	鍍錫 TIN PLATING
	高腳					Q250-FBL-14	素材 NONE
PACKING Q'TY	WIRE RANGE	DIM H2	DIM W2	DIM H1	DIM W1	PART NO.	FINISH



PART NO. Q250-FxL-xx

DWG NO. Q250-FxL-xx

FILE NO.

UNIT / mm

SCALE 1:1

CHECKED BY CY

DRAWING BY

PROJECTION

TOLERANCES ARE

.X ± 0.2  
 .XX ± 0.1  
 .XXX ±  
 AWG

DESCRIP TION: 250-8短勾

AREA	REVISIONS	HK	DATE
------	-----------	----	------

煜倫股份有限公司