

产品说明 Product Description:

1.表面处理 Surface treatment:

电镀Sn, Tin plating

2.外观 Appearance:

>30CM距离, <5S目视, 无腐蚀、刮伤、氧化

No corrosion, scratches, oxidation on surface

Inspection condition:

Inspect from >30cm away and for <5 seconds

3.环保: 符合ROHS&REACH

RoHS&REACH compliance: Yes

电线导体规格

Conductor 16~20AWG

材质

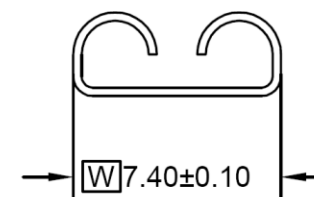
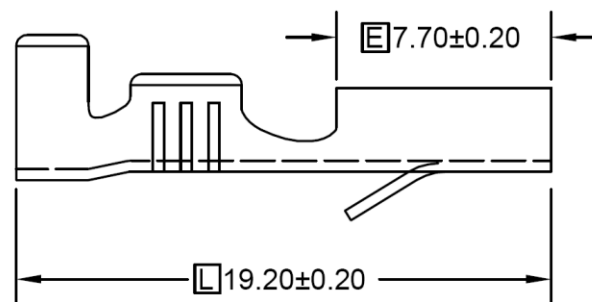
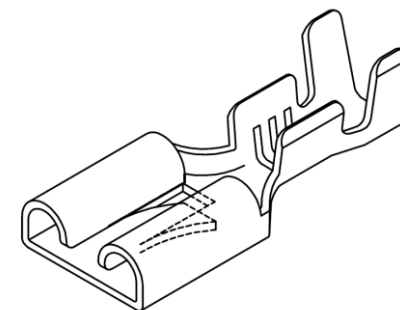
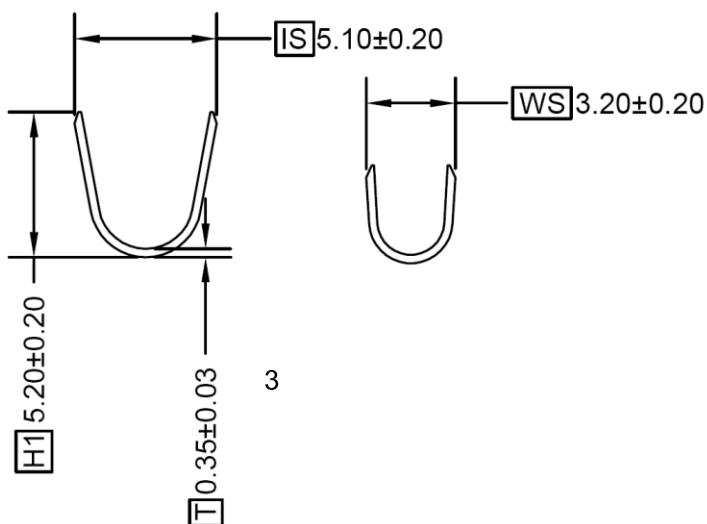
Material 黄铜Brass(C2680)

适配端子

Mating Part/ Spec. (W)6.3\*(T)0.8

包装数量

Packing Q' TY 5000Pcs/Reel



RoHS Compliant

TOLERANCES ARE

**MORETHANALL**  
PCB CONNECTORS  
Cable ASSEMBLIES  
**煜倫股份有限公司**

DRAWING BY CY

CHECKED BY GENIUS

UNIT / mm

SCALE 1 : 1

DATE

SIZE A4

X, ±  
.X ± 0.20  
.XX ± 0.10  
.XXX ± 0.05  
ANG ±

PPOJECTION

照片框

ORDER INFORMATION

Q250-FT8LK-16-LF

SERIES

LEADFREE

16~20AWG

LOCK

0.8t

TERMINAL

FEMALE

DESCRIPTION:

www.morethanall.com