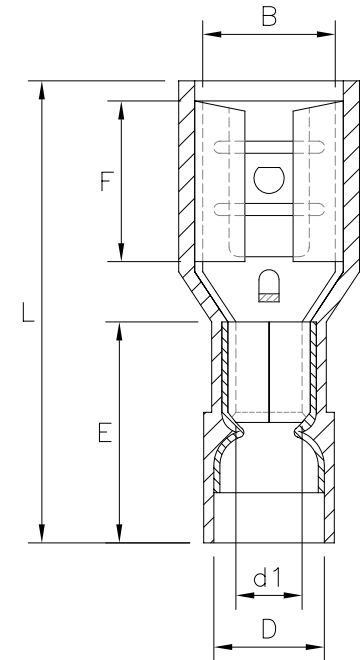
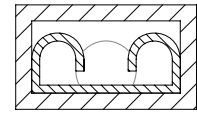


MAXIMUM ELECTRIC CURRENT

A. W. G	22	20	18	16	14
MAX AMP	3	4	7	10	15

NOTE:

1. MAXIMUM ELECTRICAL RATING: 105 °C 300 VOLTS
2. REINFORCEMENT SLEEVE: C TYPE SLEEVE
3. WIRE RANGE: AWG 22-16/0.5-1.5mm²
INSULATED COLOR: RED



WIRE RANGE AWG/mm ²	產品編號 ITEM NO.	NEMA TAB	B ±0.20	F ±0.30	L ±1.00	E ±0.60	D ±0.30	d1 ±0.20
AWG 22-16 0.5-1.5 mm ²	Q110-FT5NFQC-16	0.5x2.8	3.2	6.4	19.0	10.5	4.2	1.7
	Q110-FT8NFQC-16	0.8x2.8	3.2	6.4	19.0	10.5		

RoHS Compliant

TOLERANCES ARE

MORETHANALL
PCB CONNECTORS
Cable ASSEMBLIES

煜倫股份有限公司

www.morethanall.com

DRAWING BY CY

CHECKED BY GENIUS

UNIT / mm

SCALE 1:1

DATE

SIZE A4

P PROJECTION

X, ±
.X ±
.XX ±
.XXX ±
ANG ±



ORDER INFORMATION

Q110-FTxNFQC-16-LF

SERIES: Q110-FTxNFQC-16-LF

FEMALE TERMINAL

LEADFREE

16-22AWG

COPPER

Q TYPE

5: 0.5mm TAB FULL

8: 0.8mm TAB NYLON

DESCRIPTION: