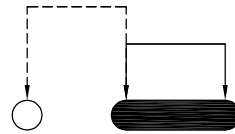


SCHEMATIC

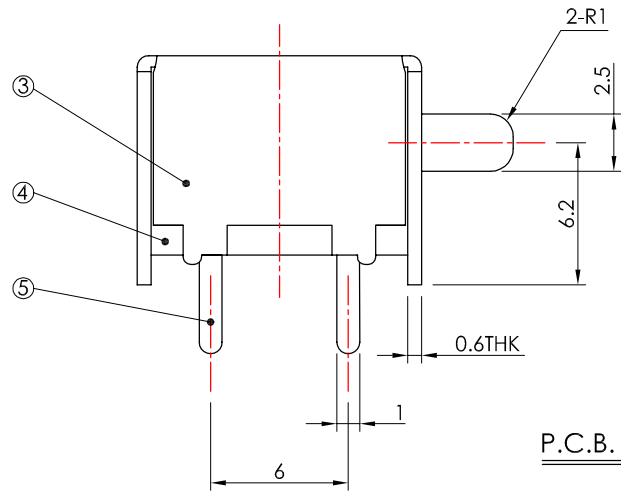


SPECIFICATION

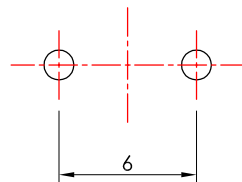
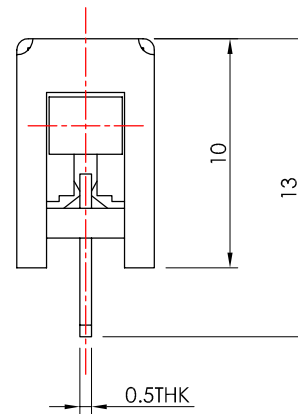
- Rating:** 0.3A 50V DC.
- Circuit:** 1P1T.
- Function:** OFF-(ON).
- Contact resistance:** 30mΩ Max.(initial)
- Insulation resistance:** 100MΩ Min. at 500V DC.
- Withstand voltage:** 500V AC for 1 minute.
- Operating force:** 60±100g.
- Minimum load:** 30mA 10V DC.(reference only)
- Switching life:** 10,000 Cycles(unloading / 15-18 Cycles per minute).
- Soldering temperature:** 230°C Max. for 2±0.5 Sec.
- Soldering time:** 1 time only.
- Note:** Unwashable, don't be immersed by epoxy and organic solvent.

MATERIAL

- Stem:** POM, black. ————— ①
- Spring:** SUS, natural. ————— ②
- Frame:** Steel strip, Ni plated. ————— ③
- Base:** Phenolic resin, natural. ————— ④
- Terminal:** Brass strip, Ag plated over Ni plated. — ⑤
- Contact clip:** PBS C5210R-EH, Ag clad.



P.C.B. LAYOUT



PSW60-R-02-LF
LEADFREE
RoHS Compliant

MORETHANALL
CONNECTORS
ASSEMBLIES

煜倫股份有限公司

PART NO. PSW60-R-02		CHECKED BY CY	TOLERANCES ARE .X ± .XX ± .XXX ± AWG	DESCRIP TION: Push Switch			
DWG NO. PSW60-R-02							
FILE NO.		PROJECTION	AREA	REVISIONS	HK	DATE	
UNIT / mm	SCALE 1:1						