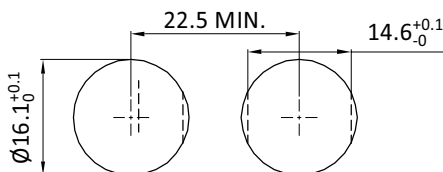
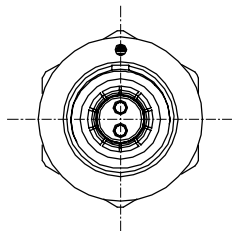
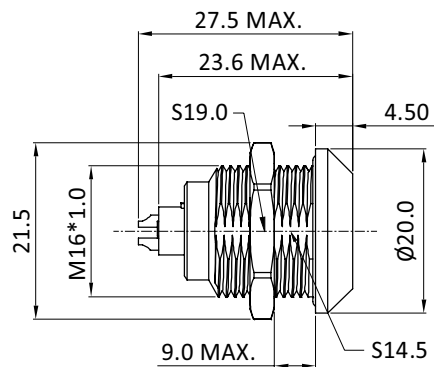


POSITIONS	02 PIN	03 PIN	04 PIN	05 PIN	06 PIN	07 PIN	08 PIN	10 PIN	14 PIN	16 PIN
VIEW FROM TERMINATION SIDE PIN PART										



PANEL CUT-OUT

NOTE:

- Material and finish  
Outer shell: Copper alloy, Cr plating  
Contact: Copper alloy, Gold plating over Ni  
Insulator: PEEK UL94 V-1  
O-ring: VMQ  
Other parts: Copper alloy, Ni plating
- Mechanical characteristics  
Insertion Force: 29.4N MAX.  
Extraction Force: 29.4N MAX.  
Endurance: 5000 mating cycles  
Vibration: 10-2000Hz , 15g comply with EIA-364-28  
Shock: 100g amplitude, half sine pulse of 3ms, no discontinuity > 1us EIA-364-27
- Electrical specifications  
Contact resistance: 8.7 mOhm MAX.  
After 5000 Cycles: 10 mOhm MAX.  
Insulation resistance: >100 Mohm  
Rated current: 2PIN 15.0A (Per Pin) 3PIN 12.0A (Per Pin)  
4PIN 10.0A (Per Pin) 5PIN 9.0A (Per Pin)  
6&7PIN 7.0A (Per Pin) 8PIN 5.0A (Per Pin)  
10PIN 2.5A (Per Pin) 14PIN 2.0A (Per Pin)  
16PIN 1.5A (Per Pin)
- Characteristics  
Waterproof level: IP68 (Mating)  
Operating temperature: -55°C ~ + 200°C  
Corrosion resistance: 144 H salt mist, 5 % salt solution, 35°C  
Humidity: 21 days at 95% RH
- Max Wire Size (AWG) : #20 for 2&3pin  
#22 for 4&5pin  
#24 for 6&7&8pin  
#28 for 10&14&16pin

RoHS Compliant

TOLERANCES ARE

**MORETHANALL**  
PCB CONNECTORS  
Cable ASSEMBLIES

煜倫股份有限公司

www.morethanall.com

DRAWING BY CY

CHECKED BY GENIUS

UNIT / mm

SCALE 1 : 1

DATE

SIZE A4

X, ±  
.X ± 0.50  
.XX ± 0.30  
.XXX ±  
ANG ± 5°

PPOJECTION

照片框

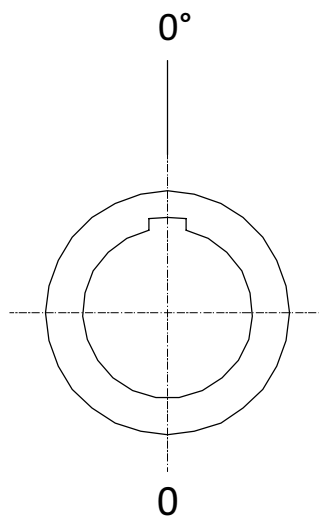
ORDER INFORMATION

PPM13-SSPAN-xx-LF

SERIES | | | | LEADFREE  
| | | | 02~16WAY  
| | | | NUT  
| | | | PANEL FRONT  
| | | | SOLDER  
| | | | FEMALE

DESCRIPTION: Metal Snap Latch 1KR Fixed Socket

# KEY ANGLES (RECEPTACLE FRONT VIEW) :



RoHS Compliant

TOLERANCES ARE

**MORETHANALL**  
PCB CONNECTORS  
Cable ASSEMBLIES

DRAWING BY CY

X. ±

CHECKED BY GENIUS

.X ± 0.50

UNIT / mm

SCALE 1:1

.XX ± 0.30

DATE

.XXX ±

ANG ± 5°

照片框

ORDER INFORMATION

PPM13-SSPAN-xx-LF

SERIES

||

||

||

||

||

||

||

||

||

||

||

||

||

||

||

||

||

||

||

LEADFREE  
02~16WAY  
NUT  
PANEL FRONT  
SOLDER  
FEMALE

煜倫股份有限公司

www.morethanall.com

SIZE A4

PPOJECTION

DESCRIPTION: Metal Snap Latch 1KR Fixed Socket