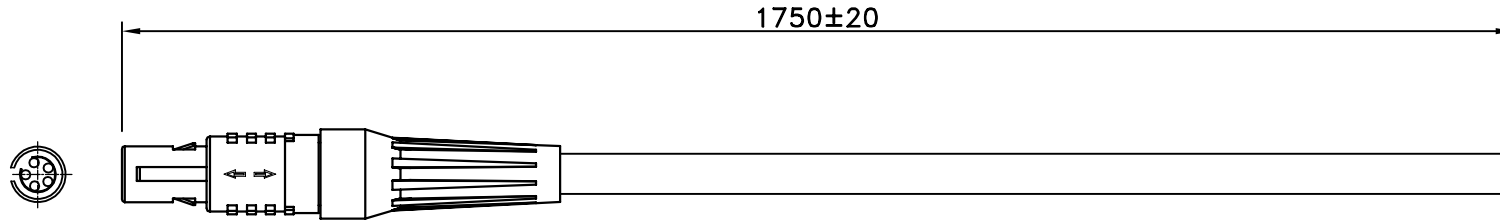
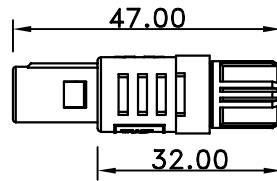


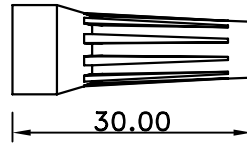
TITLE: SNAP LATCH (STRAIGHT PLUG) TO OPEN



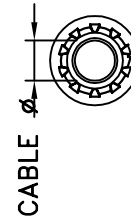
FRONT VIEW 5PIN PLUG



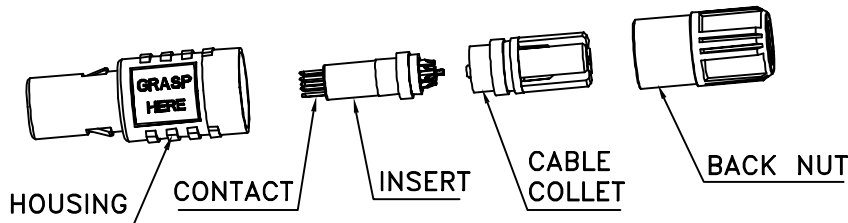
LATERAL VIEW



SHEATH



CONN	PIN OUT	OPEN
1	BLACK	NC
2	BROWN	NC
3	RED	NC
4	ORANGE	NC
5	YELLOW	NC



**MORETHANALL**  
CONNECTORS  
ASSEMBLIES

PART NO. PP9X1-050026YL-M1M75

RoHS Compliant

DWG NO. PP9X1-050026YL-M1M75

CHECKED BY CY

TOLERANCES ARE

DESCRIPTION:

FILE NO.

DRAWING BY

X. ±  
.X ±  
.XX ±  
.XXX ±  
ANG

AREA

REVISIONS

DATE

焯倫股份有限公司

UNIT / mm

SCALE 1:1

PROJECTION



TITLE: SNAP LATCH (STRAIGHT PLUG) TO OPEN

\*\*\*CONSTRUCTION:

1.CABLE: \* UL2464 (6C/26#)+EA OD:5.2mm GRAY COLOR JACKET.

\*\*\*CONNECTORS:

- 2.CONN: \* MTA 5PIN PLUG SOLDER TYPE.  
 \* HOUSING: HIGH TEMPERATURE PLASTIC,UL94V-0 GRAY COLOR.  
 \* INSERT: HIGH TEMPERATURE PLASTIC,UL94V-0.  
 \* CONTACT: COPPER ALLOY.  
 \* CABLE COLLET: HIGH TEMPERATURE PLASTIC,UL94V-0.  
 \* BACK UNT: HIGH TEMPERATURE PLASTIC,UL94V-0 YELLOW COLOR.
- 3.SHEATH: \* MTA  
 \* MATERIAL: SILICON YELLOW COLOR.
- 4.TEST: \* CT: 2 Ohm. IS: 5M Ohm.
- 5.PACKING: \* PACK EACH CABLE IN A POLY BAG.
- 6.MATERIAL: \* MATERIAL WITH RoHS GRADE.



PART NO. PP9X1-050026YL-M1M75

DWG NO. PP9X1-050026YL-M1M75

FILE NO.

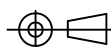
UNIT / mm

SCALE 1:1

CHECKED BY CY

DRAWING BY

PROJECTION



TOLERANCES ARE

- X.±
- .X±
- .XX±
- .XXX±
- ANG

DESCRIPTION:

AREA

REVISIONS

DATE

煜倫股份有限公司