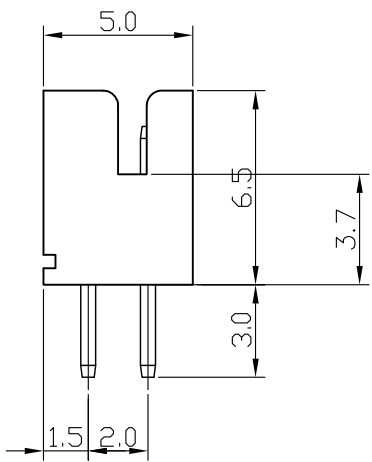
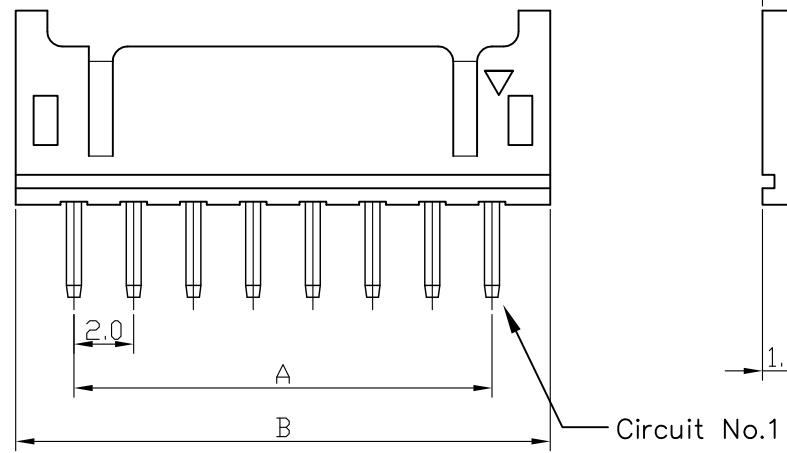


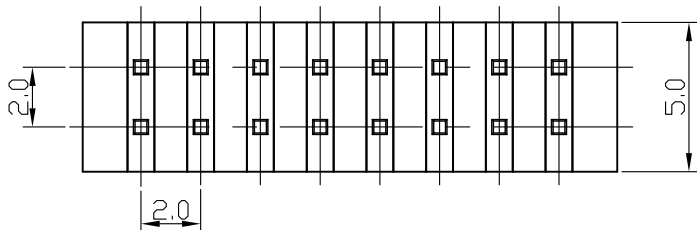
Specification

Current Rating: 2A AC DC  
 Voltage Rating: 250V AC, DC  
 Operating Temp: -25°C ~ +85°C  
 Contact Resistance: 20mΩ Max  
 Withstanding Voltage: 800V AC/minute  
 Insulation Resistance: 1000MΩ Min  
 Pin Material: Brass/ Gold 15u" over 50u" Nickel  
 Body Material: Nylon 66, UL 94V-0+GF



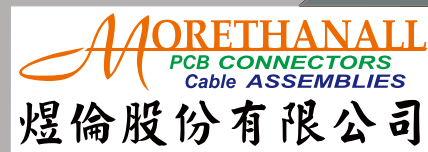
Ordering Information & Dimensions

| Poles | Dimension (mm) |      | Part No.  | Note. |
|-------|----------------|------|-----------|-------|
|       | A              | B    |           |       |
| 2x2   | 2.0            | 6.0  | PHD-DG-04 |       |
| 2x3   | 4.0            | 8.0  | PHD-DG-06 |       |
| 2x4   | 6.0            | 10.0 | PHD-DG-08 |       |
| 2x5   | 8.0            | 12.0 | PHD-DG-10 |       |
| 2x6   | 10.0           | 14.0 | PHD-DG-12 |       |
| 2x7   | 12.0           | 16.0 | PHD-DG-14 |       |
| 2x8   | 14.0           | 18.0 | PHD-DG-16 |       |
| 2x9   | 16.0           | 20.0 | PHD-DG-18 |       |
| 2x10  | 18.0           | 22.0 | PHD-DG-20 |       |
| 2x11  | 20.0           | 24.0 | PHD-DG-22 |       |
| 2x12  | 22.0           | 26.0 | PHD-DG-24 |       |
| 2x13  | 24.0           | 28.0 | PHD-DG-26 |       |
| 2x14  | 26.0           | 30.0 | PHD-DG-28 |       |
| 2x15  | 28.0           | 32.0 | PHD-DG-30 |       |
| 2x16  | 30.0           | 34.0 | PHD-DG-32 |       |
| 2x17  | 32.0           | 36.0 | PHD-DG-34 |       |
| 2x20  | 38.0           | 42.0 | PHD-DG-40 |       |



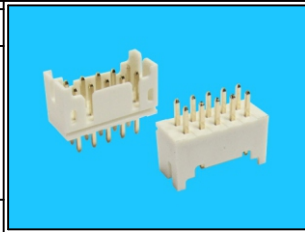
RoHS Compliant

TOLERANCES ARE



DRAWING BY CY  
 CHECKED BY GENIUS  
 UNIT / mm SCALE 1 : 1  
 DATE

X. ±  
 .X ±  
 .XX ±  
 .XXX ±  
 ANG ±



ORDER INFORMATION

PHD-DG-xx-LF  
 SERIES | LEADFREE  
 | 04-40WAY  
 | GOLD  
 | DIP 180°

www.morethanall.com

SIZE A4 PPROJECTION

DESCRIPTION: 2.0mm Wire-to-Board Header 180° Dual Row Type