

B-B Section

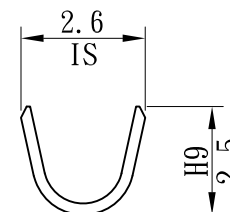
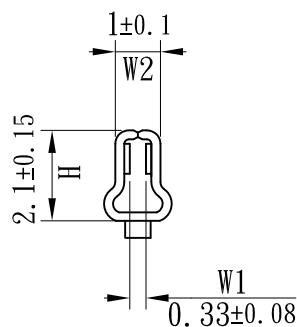
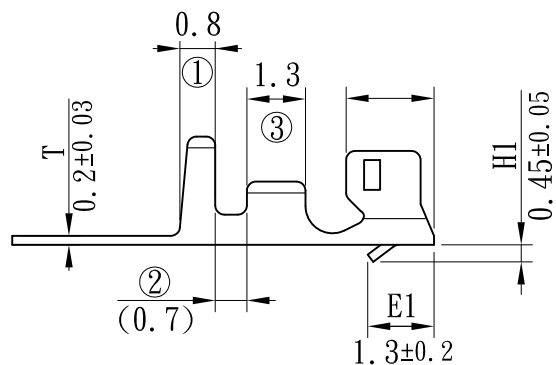
表面處理(Surface treatment):
 預鍍錫膜厚 40μ "以上
 (Pre-tin-plated thickness)

適用電線(Applicable wire):
 AWG# 24~28

線皮外徑(Insulation O.D):
 1.5~1.2 mm

材質(Material):
 磷青銅[Phosphor bronze]

包裝數量(Standard packing):
 10000 PCS



A-A Section

RoHS Compliant

TOLERANCES ARE

MORETHANALL
 PCB CONNECTORS
 Cable ASSEMBLIES

煜倫股份有限公司

www.morethanall.com

DRAWING BY CY

CHECKED BY GENIUS

UNIT / mm SCALE 1:1

DATE

SIZE A4

X.±
 .X±
 .XX±
 .XXX±
 ANG ±

PPOJECTION

照片框

ORDER INFORMATION

PH-T-24-LF
 SERIES | LEADFREE
 24~28 AWG
 TERMINAL

DESCRIPTION: Terminal(2.0mm Pitch Series)