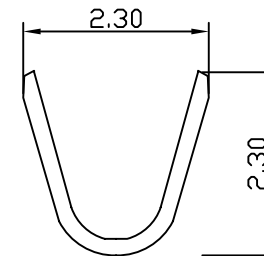
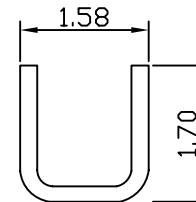
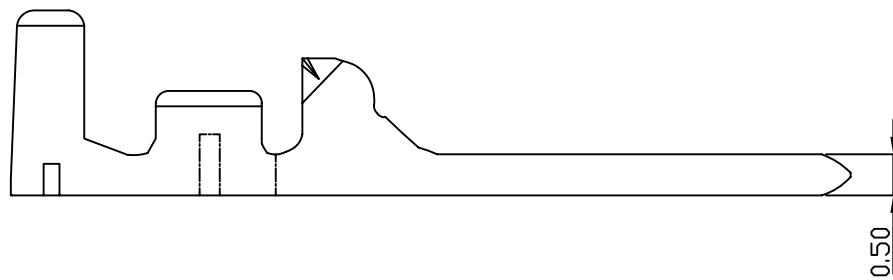
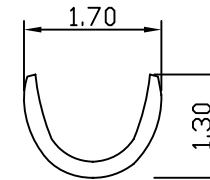
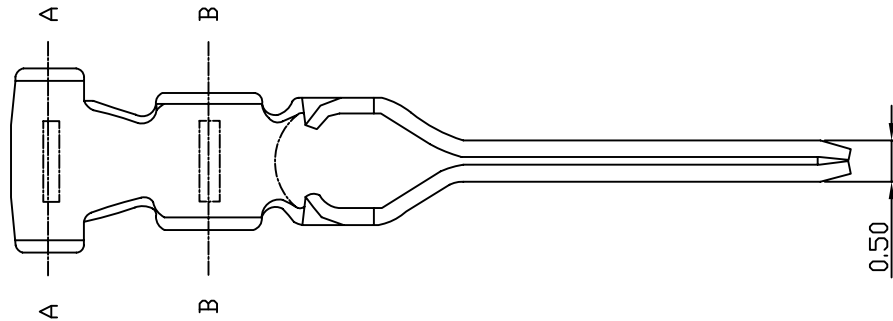


Material: Phosphor bronze (Lead Free)  
 Finish: Plated Tin over Nickel  
 Electrical rating: 30V 2A, AC/DC  
 Applicable wire AWG#30-26



RoHS Compliant

TOLERANCES ARE

**MORETHANALL**  
 PCB CONNECTORS  
 Cable ASSEMBLIES

DRAWING BY CY

X. ±

CHECKED BY GENIUS

.X ±

UNIT / mm

SCALE 1 : 1

.XX ±

DATE

.XXX ±

ANG ±

SIZE A4

PROJECTION

照片框

ORDER INFORMATION

PH-M-26-LF  
 SERIES | LEADFREE  
 26~30 AWG  
 MALE TERMINAL

煜倫股份有限公司

www.morethanall.com

DESCRIPTION: