

1. Electrical / 电气性能

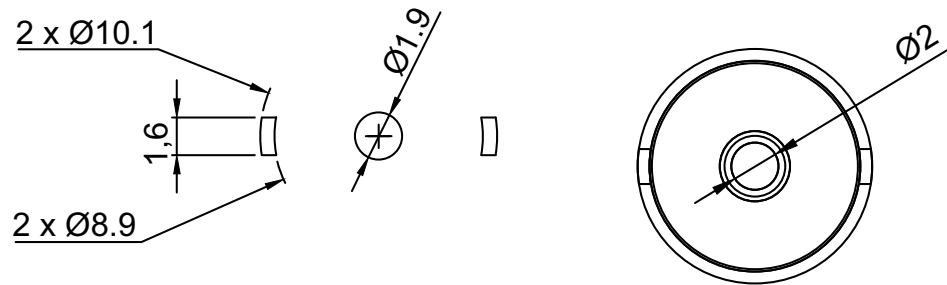
- 1.1 Current Rate / 电流 : 2 A
- 1.2 Contact Resistance / 接触电阻 : 50 m $\Omega$

2. Environmental / 环境

- 2.1 Operating temperature range / 工作温度 : -40 $^{\circ}\text{C}$  ~ 80 $^{\circ}\text{C}$

3. Material / 材料

- 3.1 Pin / 母针 : Brass C3604, 10u" gold Plating
- 3.2 Housing / 塑胶 : PA6T + 30% GF
- 3.3 Magnet / 磁铁 : NdFeB , N52
- 3.4 Metal shell / 金属壳 : Brass , Ni



RECOMMEND PCB LAYOUT  
Layout Tolerance:  $\pm 0.05\text{mm}$

RoHS Compliant

TOLERANCES ARE

**MORETHANALL**  
PCB CONNECTORS  
Cable ASSEMBLIES

DRAWING BY CY

CHECKED BY GENIUS

UNIT / mm

SCALE 1 : 1

DATE

SIZE A4

PPOJECTION

X.  $\pm$   
.X  $\pm$   
.XX  $\pm$   
.XXX  $\pm$   
ANG  $\pm$

照片框

ORDER INFORMATION

PGS-DMS-01-LF  
SERIES | LEADFREE  
| 01 WAY  
| MAGNETIC SUCTION  
DIP 180 $^{\circ}$

煜倫股份有限公司

www.morethanall.com

DESCRIPTION: 2Pin 10mmD magnetic connector 圓形磁吸母端