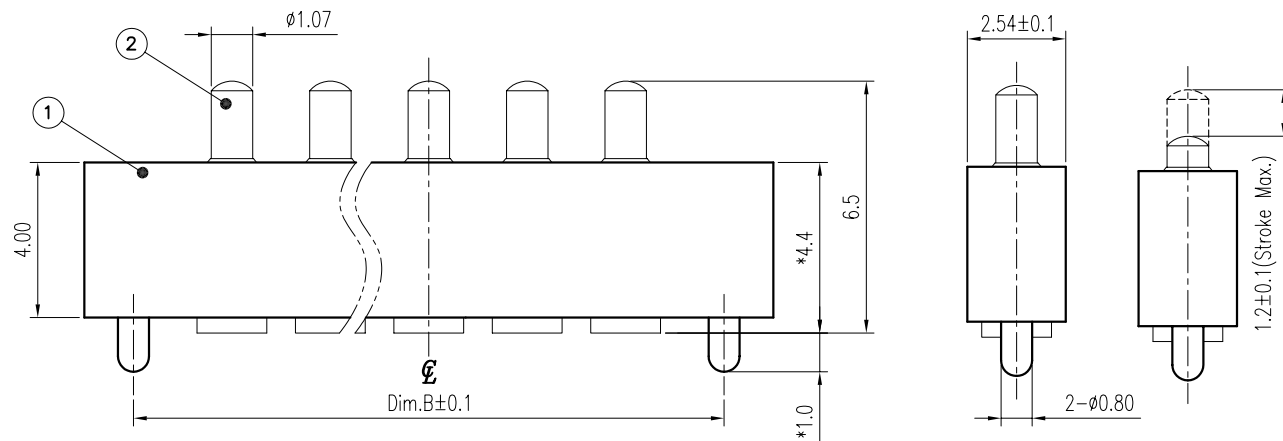
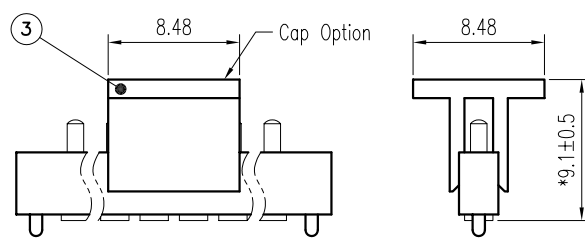
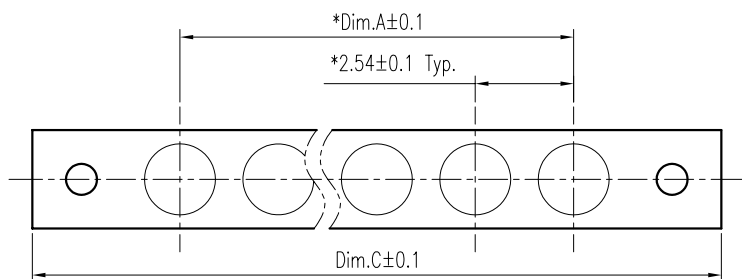


- Notes: 1. 材質:  
 膠芯: LCP + 30% G.F., UL 94V-0  
 端子: 銅合金  
 Cap: LCP全次料  
 2. 電鍍:  
 端子: 對接區: 20u" Min.金  
 焊接區: 10u"Min.金  
 鍍底: 100u"Min.



Dimension Information:

Part No.	Dim.	Pin 數	Dim.A	Dim.B	Dim.C
PGP26-V65PC-1X02	2	2.54	7.62	10.16	
PGP26-V65PC-1X03	3	5.08	10.16	12.70	
PGP26-V65PC-1X04	4	7.62	12.70	15.24	
PGP26-V65PC-1X05	5	10.16	15.24	17.78	
PGP26-V65PC-1X06	6	12.70	17.78	20.32	
PGP26-V65PC-1X07	7	15.24	20.32	22.86	
PGP26-V65PC-1X08	8	17.78	22.86	25.40	
PGP26-V65PC-1X09	9	20.32	25.40	27.94	
PGP26-V65PC-1X10	10	22.86	27.94	30.48	
PGP26-V65PC-1X11	11	25.40	30.48	33.02	
PGP26-V65PC-1X12	12	27.94	33.02	35.56	
PGP26-V65PC-1X13	13	30.48	35.56	38.10	
PGP26-V65PC-1X14	14	33.02	38.10	40.64	
PGP26-V65PC-1X15	15	35.56	40.64	43.18	
PGP26-V65PC-1X16	16	38.10	43.18	45.72	



With Cap  
Scale 2:1

PGP26-V65PC-1Xxx-LF  
LEADFREE  
RoHS Compliant



PART NO. PGP26-V65PC-1Xxx

DWG NO. PGP26-V65PC-1Xxx

CHECKED BY CY

TOLERANCES ARE

.X ± 0.2  
.XX ± 0.1  
.XXX ±  
AWG

DESCRIP TION:

2.5mm Pitch Pin Header  
Single Type

煜倫股份有限公司

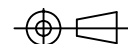
FILE NO.

DRAWING BY

UNIT / mm

SCALE 1:1

PROJECTION



AREA

REVISIONS

HK

DATE