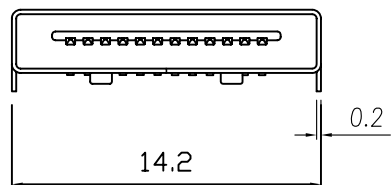
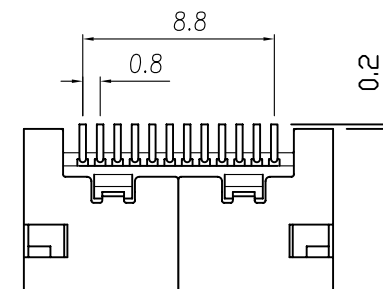
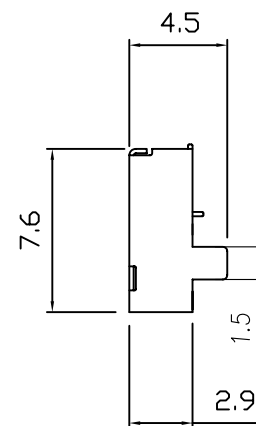
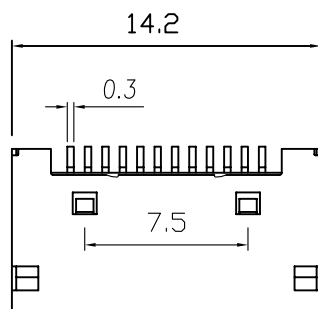
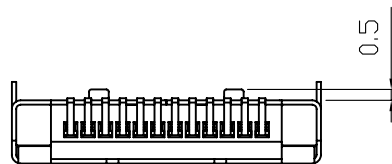


Recommend P.C.B Layout



備註/NOTE:

1. 安規/Safety:

- 1-1. 規格/Rating:DC 100V/0.5A
- 1-2. 接觸組抗/Contact Resistance:30m ohm or less
- 1-3. 絕緣組抗/Insulation Resistance:500M ohm Min at DC 100V
- 1-4. 絕緣耐壓/Dielectric Withstanding Voltage:AC 200V for 1 minute

2. 材質/MATERIAL:

- 2-1. 端子/PIN:磷銅/PHOSPHOR BRONZE; 錫金10u''
- 2-2. 膠芯/HOUSING:LCP/STAINLESS STEEL
- 2-3. 鐵殼/SHELL:不鏽鋼

RoHS Compliant

TOLERANCES ARE

MORETHANALL
PCB CONNECTORS
Cable ASSEMBLIES

DRAWING BY CY

CHECKED BY GENIUS

UNIT / mm SCALE 1 : 1

DATE

SIZE A4

X, ±
.X ±
.XX ±
.XXX ±
ANG ±

P PROJECTION

照片框

ORDER INFORMATION

PCM-JW-12-LF
SERIES | LEADFREE
| 12WAY
| 90°SMT
JACK

煜倫股份有限公司

www.morethanall.com

DESCRIPTION: PCMCIA 12(F)SMT 長腳