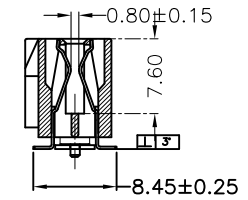
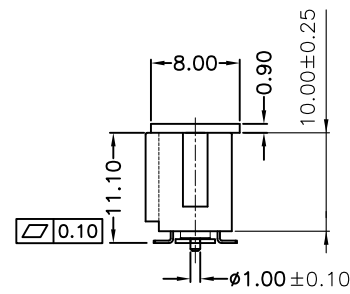
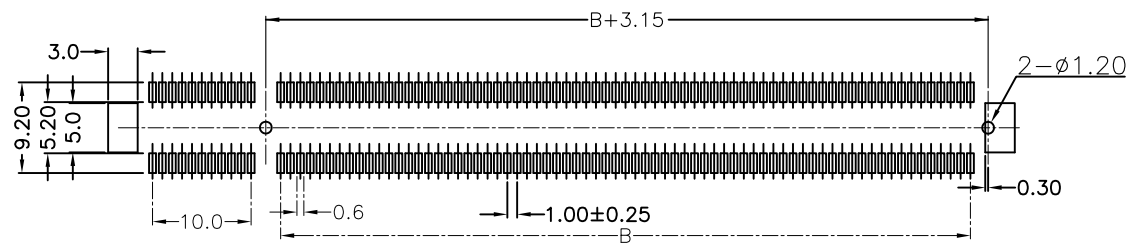
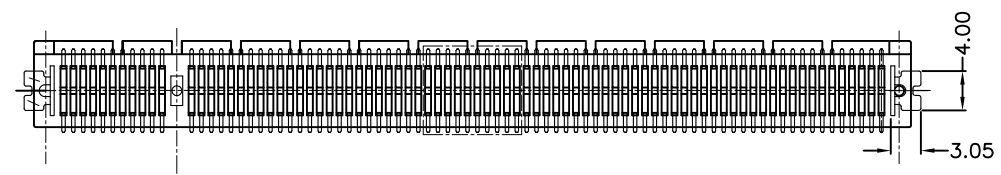


PIN數	A	B	C
36	7.65	6.00	25.00
64	21.65	20.00	39.00
98	38.65	37.00	56.00
164	71.65	70.00	89.00



SECTION: A-A



PCB LAYOUT

- Note:
- Electrical Performance
 - Dielectric Withstanding Voltage: 500V/AC For 1.0 Minute.
 - Contact Resistance: 30m
 - Insulation Resistance: 1000M
 - Current Rating: 1.1A
 - Mechanical Performance.
 - CONTACT INSERTION FORCE: 0.115Kg Max Per.Contact Pair.
 - CONTACT WITHDRAWAL FORCE: 0.015Kg Min Per.Contact Pair.
 - Terminal Retention Force (in housing): 0.5Kg Min per Terminal.
 - Material & Finish:
 - Insulator: Hi-Temp NY-9T UL 94V-0, 260°/10Sec, Black
 - Contact: BRASS
 - Plating: Tin Plating At Solder Tail Area; Gold Plating At Mating Area, All Over Nickel Plating.
 - Environmental: Operating Temperature: -55 C ~ +85 C

RoHS Compliant

TOLERANCES ARE



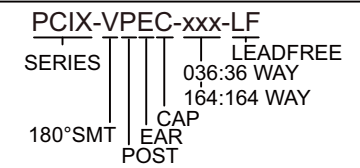
煜倫股份有限公司

www.morethanall.com

DRAWING BY CY		X. ± 0.30 .X ± 0.30 .XX ± 0.20 .XXX ± 0.10 ANG $\pm 1^\circ$
CHECKED BY GENIUS		
UNIT / mm	SCALE 1:1	
DATE		
SIZE A4	P PROJECTION	



ORDER INFORMATION



DESCRIPTION: