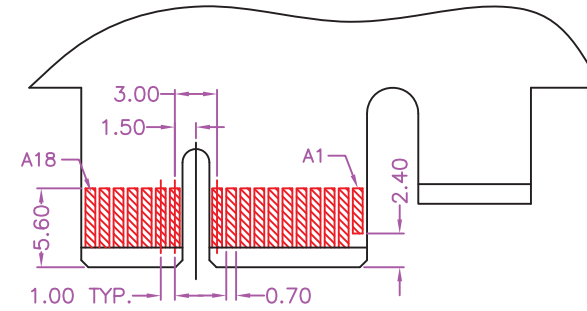
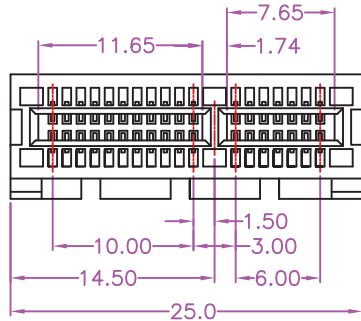
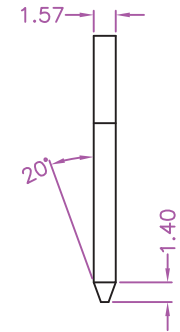


RECOMMENDED EDGE CARD PATTERN(PRIMARY SIDE)



RECOMMENDED EDGE CARD PATTERN(SECONDARY SIDE)

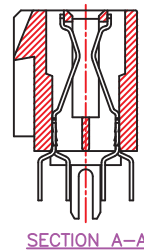
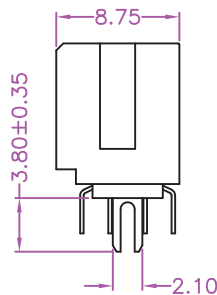
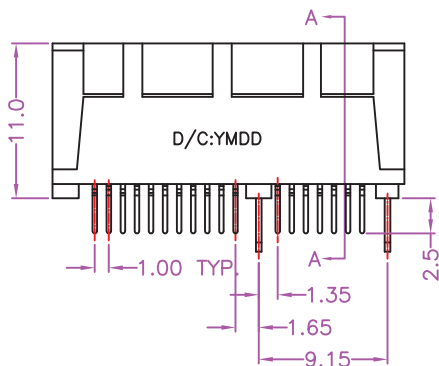


MATERIALS

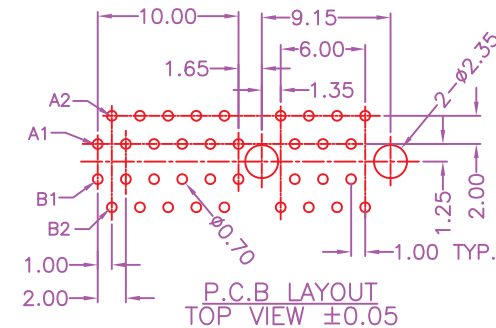
HOUSING: PBT (UL 94-HB)  
 BOARDLOCK: SPCC, NICKEL PLATING  
 TERMINAL: COPPER ALLOY, GOLD PLATED ON CONTACT AREA  
 TIN PLATING ON SOLDER TAIL

SPECIFICATION

CURRENT RATING: 1.1 AMP MAX  
 DIELECTRIC WITHSTANDING: 500V AC FOR ONE MINUTE  
 CONTACT RESISTANCE: 30m OHMS MAX  
 INSULATION RESISTANCE: 1000M OHMS MIN AT DC 500V  
 OPERATION TEMPERATURE: -55°C~+105°C



SECTION A-A



P.C.B LAYOUT TOP VIEW ±0.05

RoHS Compliant

TOLERANCES ARE

**MORETHANALL**  
 PCB CONNECTORS  
 Cable ASSEMBLIES

DRAWING BY CY

X, ±

CHECKED BY GENIUS

.X, ±

UNIT / mm

SCALE 1 : 1

.XXX, ±

DATE

ANG, ±

煜倫股份有限公司

www.morethanall.com

SIZE A4

PJECTION

照片框

ORDER INFORMATION

PCIX-DZ-036-LF

SERIES | LEADFREE  
 36 WAY  
 CLIP  
 DIP 180°

DESCRIPTION: PCI EXPRESS, 1.00mm PITCH, PCB MOUNT, VERTICAL, FEMALE, 1 KEY WITH BOARDLOCK, 36 PIN