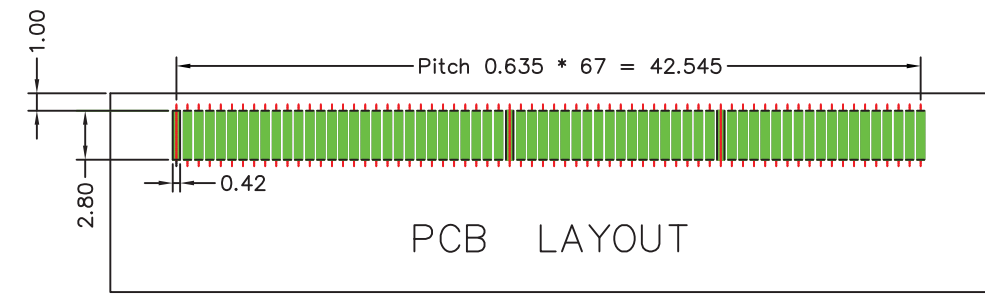
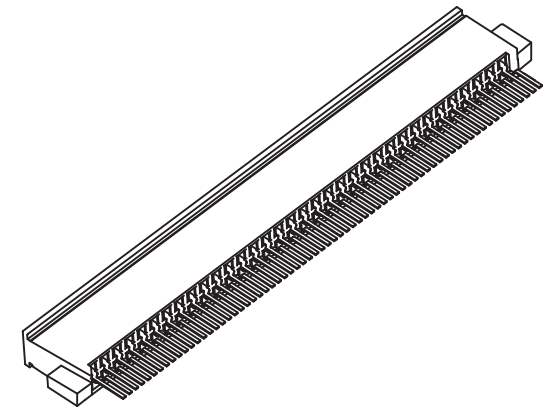
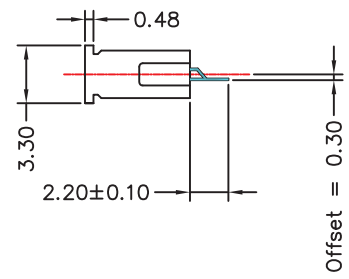
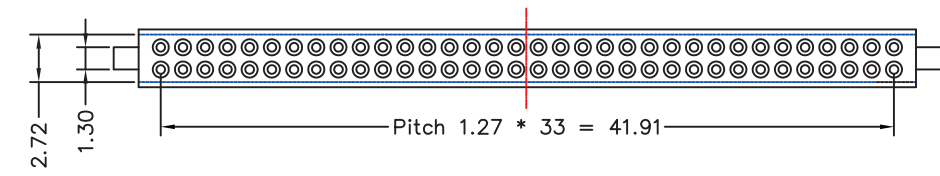


**NOTE**

- A. Material:  
 1. Housing : HTN or LCP, UL94V-0, Black.  
 2. Contact : Phosphor Bronze
- B. Plating  
 1.Contact : Underplating 50u" min Nickel.  
 Contact area Selective AU over Nickel plated.  
 Solder tail 100u" min Sn over Nickel plated.



PCC-SWA03-68-LF  
 LEADFREE  
 RoHS Compliant



煜倫股份有限公司

PART NO. PCC-SWA03-68		CHECKED BY CY	TOLERANCES ARE X, ± .X ± 0.125 .XX ± 0.050 .XXX ± 0.010 ANG	DESCRIPTION: PCMCIA 68pin Female Connector SMT Type Offset = 0.30	AREA	REVISIONS	DATE
DWG NO. PCC-SWA03-68							
FILE NO.		PROJECTION					
UNIT / mm	SCALE 1:1						