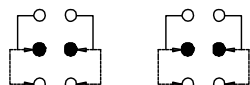
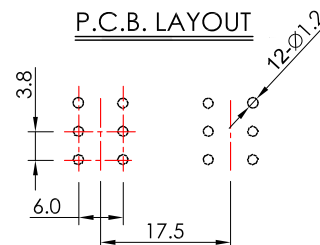


SCHEMATIC (NON-SHORTING)



P.C.B. LAYOUT



SPECIFICATION

Rating: 50mA 30V DC.

Timing: Non-shorting.

Contact resistance: <50mΩ.

Insulation resistance: ≥100MΩ at 250V DC.

Withstand voltage: 250V AC for 1 minute.

Operating temperature: -30°C ~ +60°C.

Operating force: 300±100g.

Life: 10,000 Cycles.

Soldering temperature: 230±5°C for 3±1 seconds.

Soldering time: 1 time only.

Note1: Unwashable, don't be immersed by epoxy and organic solvent.

Note2: Please do not scale the drawing comparing to real product and kindly measure the size of real product.

MATERIAL

Bracket: SPCC, Zi plated.

Spring Ø0.5: SUS, natural.

Slider center: POM, white.

Terminal: Brass strip, Ag plated.

Slider base: PC, black.

Lock pin: SUS, white.

Spring Ø0.18: SUS, natural.

Contact clip: Brass strip, Ag plated.

Base: Phenolic resin, natural.

Linkage spring: SUS, natural.

Linkage rod: SPCC, natural.

STORAGE METHOD

After opening the bag of the switches, please include a desiccant into the bag, then seal it to avoid product oxidation.

打開包裝袋後，請在袋中加入乾燥劑並「密封」，避免產品氧化。

RoHS Compliant

TOLERANCES ARE

MORETHANALL
PCB CONNECTORS
Cable ASSEMBLIES

煜倫股份有限公司

www.morethanall.com

DRAWING BY CY

CHECKED BY GENIUS

UNIT / mm

SCALE 1 : 1

DATE

SIZE A4

PPOJECTION

X, ±
.X ± 0.30
.XX ± 0.20
.XXX ±
ANG ±

照片框

ORDER INFORMATION

PBS175A02-RPE-06-LF

SERIES

LEADFREE

06 WAY

PANEL EAR

DIP 90°

DESCRIPTION: