

RECOMMENDED P.C.B LAYOUT

MATERIAL

HOUSING : THERMOPLASTIC UL94V-0

CONTACT : COPPER ALLOYS

SPECIFICATION

CURRENT: 1A

OPERATING TEMPERATURE: -55°C TO +105°C

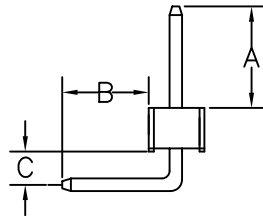
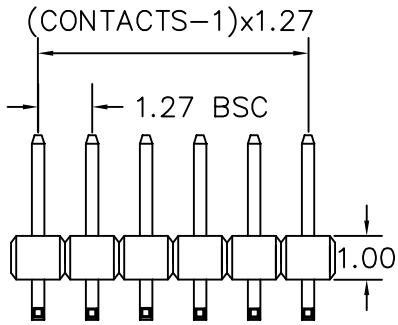
CONTACT RESISTANCE : 20 MILLIOHMS MAX

INSULATION RESISTANCE : 1000 MEGAOHMS MIN

WITHSTANDING VOLTAGE: AC 1000V RMS

PA-R103028-1Xxx-LF
LEADFREE

RoHS Compliant



A: 3.00 mm B: 2.80 mm C: 1.00 mm

CONTACTS	1X14	CONTACTS	1X39
1X2	1X15	1X27	1X40
1X3	1X16	1X28	1X41
1X4	1X17	1X29	1X42
1X5	1X18	1X30	1X43
1X6	1X19	1X31	1X44
1X7	1X20	1X32	1X45
1X8	1X21	1X33	1X46
1X9	1X22	1X34	1X47
1X10	1X23	1X35	1X48
1X11	1X24	1X36	1X49
1X12	1X25	1X37	1X50
1X13	1X26	1X38	



PART NO. PA-R10 3028-1Xxx

DWG NO. PA-R10 3028-1Xxx

FILE NO.

CHECKED BY CY

DRAWING BY

TOLERANCES ARE

.X ± 0.2
.XX ±
.XXX ±
AWG

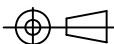
DESCRIPTION:

焯倫股份有限公司

UNIT / mm

SCALE 1:1

PROJECTION



AREA

REVISIONS

HK

DATE