

MATERIAL

Insulator : NYLON 6T

Contact Pin : Brass

SPECIFICATION

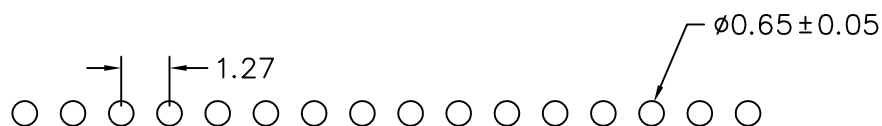
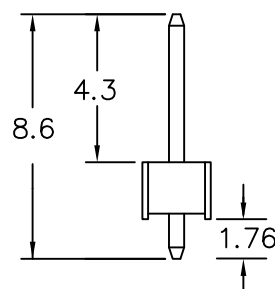
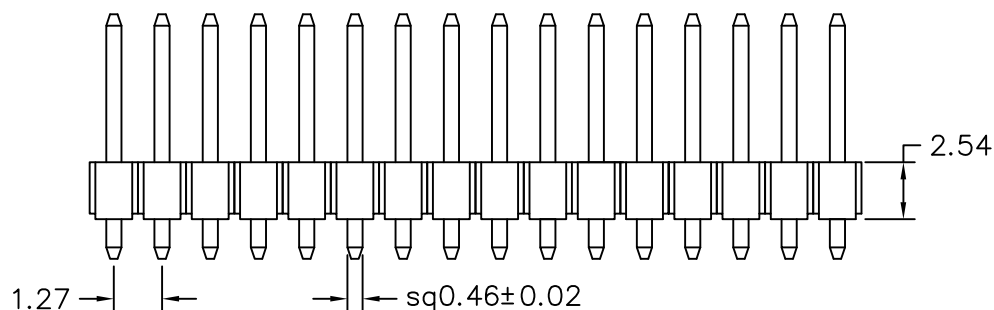
Current Rate : 1 AMP

Insulation Resistance : 5000MΩMin. at DC 500V

Contact Resistance : 20mΩMax. at DC 100mA

Dielectric Voltage : AC 500V for one minute

Operation Temperature : -40°C to + 105°C



Recommended P.C.B Layout

RoHS Compliant

TOLERANCES ARE

MORETHANALL
PCB CONNECTORS
Cable ASSEMBLIES

DRAWING BY CY

X. ±

CHECKED BY GENIUS

.X ± 0.30

UNIT / mm

SCALE 1 : 1

.XX ± 0.15

DATE

.XXX ±

ANG ± 3°

照片框

ORDER INFORMATION

P-D254317-1X16-LF
SERIES | LEADFREE
16 WAY
DIP 1.76mm
CONTACT 4.3mm
BASE 2.5mm
DIP180°

煜倫股份有限公司

www.morethanall.com

SIZE A4

PJECTION

DESCRIPTION: PIN HEADER 1.27*2.54mm STRAIGHT TYPE, SINGLE ROW