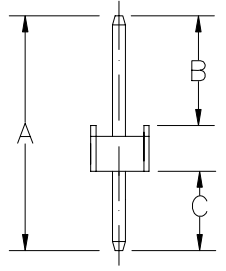
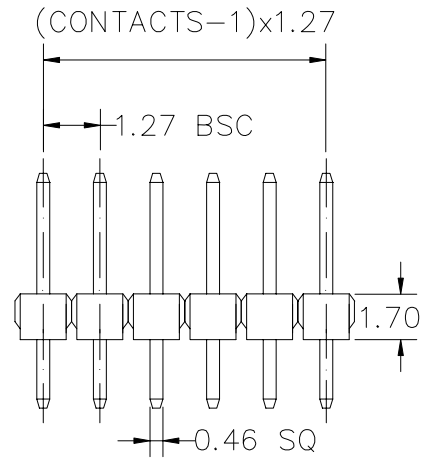


RECOMMENDED P.C.B LAYOUT



A: 7.00 mm B: 2.30 mm C: 3.00 mm

**MATERIAL**  
**HOUSING : THERMOPLASTIC UL94V-0**  
**CONTACT : COPPER ALLOYS**

**SPECIFICATION**  
**CURRENT: 1A**  
**OPERATING TEMPERATURE: -45°C TO +105°C**  
**CONTACT RESISTANCE : 20 MILLIOHMS MAX**  
**INSULATION RESISTANCE : 5000 MEGAOHMS MIN**  
**WITHSTANDING VOLTAGE : AC 500V RMS**

P-D17-1Xxx-LF  
 LEADFREE  
 RoHS Compliant



PART NO. P-D17-1Xxx

DWG NO. P-D17-1Xxx

FILE NO.

CHECKED BY CY

DRAWING BY

PROJECTION

TOLERANCES ARE  
 .X ± 0.2  
 .XX ± 0.1  
 .XXX ±  
 AWG

DESCRIP TION:					
AREA	REVISIONS	HK	DATE		

煜倫股份有限公司

UNIT / mm

SCALE 1:1