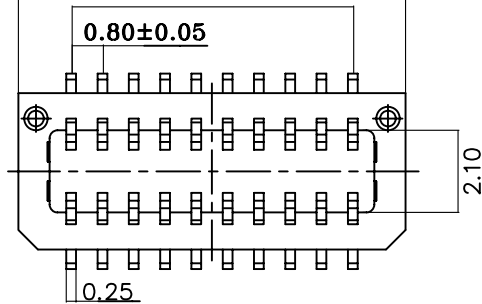


$1.90+0.80*\text{No.of Positions}\pm 0.25$

$0.80*\text{No.of Contacts}-0.80\pm 0.10$



F/M ASSEM HEIGHT	PART NO.	L	L1
4.00H	NPE-S10P-xxx	2.80	1.80
4.50H	NPE-S15P-xxx	3.30	1.80
5.00H	NPE-S20P-xxx	3.80	1.80
5.50H	NPE-S21P-xxx	4.30	2.30
6.00H	NPE-S25P-xxx	4.80	2.30
6.50H	NPE-S30P-xxx	5.30	2.30
7.00H			

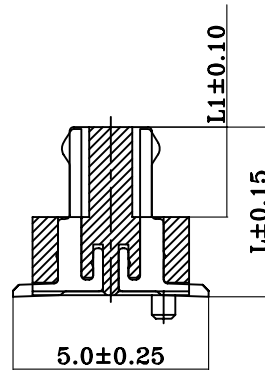
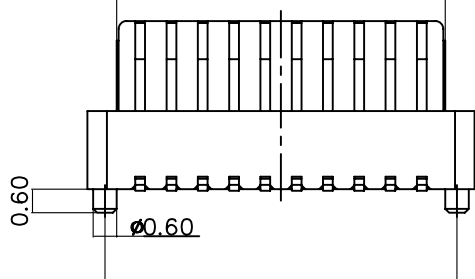
Specifications

Current Rating: 0.5Amp
 Insulation Resistance: 1000MΩ Min.
 Dielectric Withstanding: 300V AC/DC
 Contact Resistance: 20mΩ Max.
 Operating Temperature: -40°C to +105°C

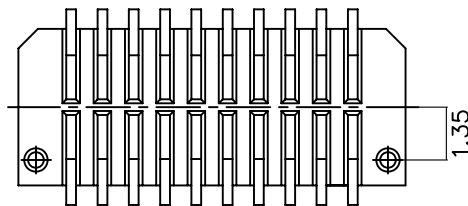
Materials

Contact Material: Phosphor Bronze
 Insulation Material: Polyester, UL 94V-0
 Nylon-9T

$0.40+0.80*\text{No.of Positions}\pm 0.10$

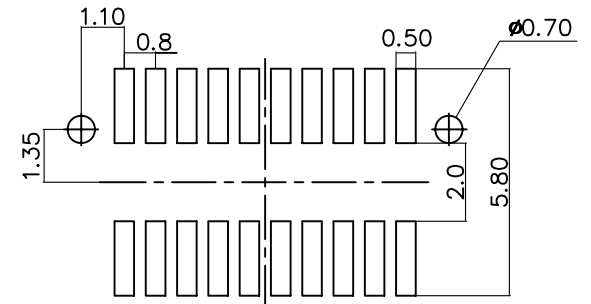


$1.00+0.80*\text{No.of Positions}\pm 0.10$



NPE-S10P-xxx-LF
 LEADFREE

RoHS Compliant



LAYOUT RECOMMENDED P.C.BOARD



PART NO. NPE-SxxP-xxx		APPROVED BY CY		TOLERANCES ARE .X ± 0.38 .XX ± 0.25 .XXX AWG		DESCRIPTION: 0.8 B TO B FEMALE	
DWG NO. NPE-SxxP-xxx		DRAWING BY				AREA	REVISIONS
FILE NO.		PROJECTION					
UNIT / mm	SCALE 1:1						

煜倫股份有限公司