

**Material:**

Housing: High Temperature Plastic, UL94V-0.

Contacts: Copper Alloy.

**Electrical Characteristics:**

Current Rating: 0.5 AMP.

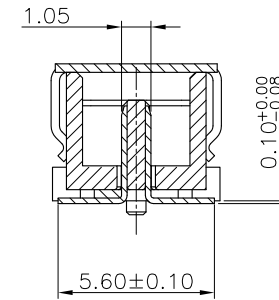
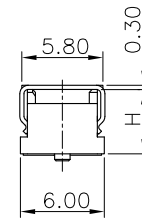
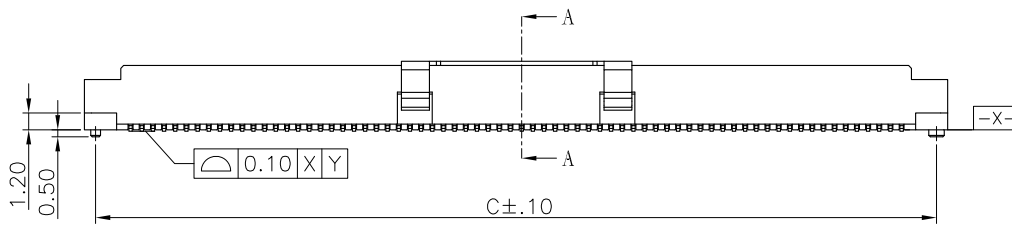
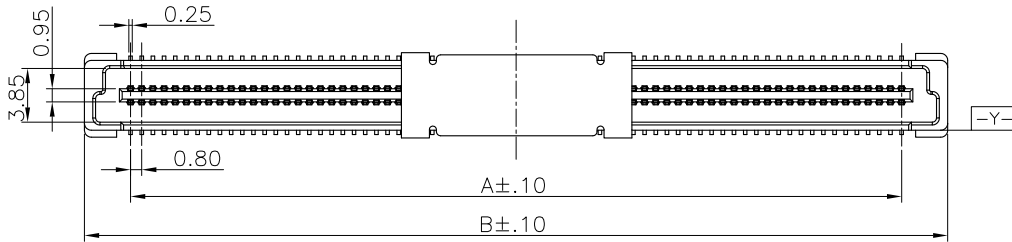
Dielectric Withstanding Voltage: AC 500V For 1 minute.

Insulator Resistance: 500MΩ min. at DC 250V.

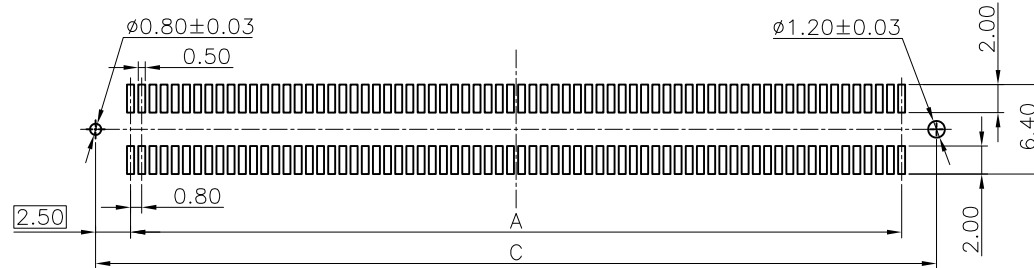
Contact Resistance: 30mΩ max. at DC 100mA.

Operating Temperature: -45°C~+125°C.

**\*RoHS Compliant**



Section A-A  
Scale: 2 : 1



P.C. Board Layout  
(Tolerance: ±0.05)

Code	H
1	4.6
2	5.6
3	6.6
4	7.6

Position (n)	Dimension		
	A	B	C
40	15.20	21.80	20.20
60	23.20	29.80	28.20
80	31.20	37.80	36.20
100	39.20	45.80	44.20
120	47.20	53.80	52.20
140	55.20	61.80	60.20
160	63.20	69.80	68.20
180	71.20	77.80	76.20
200	79.20	85.80	84.20

**RoHS Compliant**

TOLERANCES ARE



煜倫股份有限公司

www.morethanall.com

DRAWING BY CY

CHECKED BY GENIUS

UNIT / mm SCALE 1 : 1

DATE

SIZE A4

X, ±  
.X, ±  
.XX, ±  
.XXX, ±  
ANG, ±

P PROJECTION

照片框

**ORDER INFORMATION**

NP08FH-PxxPC-xxx-LF

SERIES LEADFREE  
040-200WAY

MALE CAP POST  
46: UNMATED HIGH 4.6mm  
76: UNMATED HIGH 7.6mm

DESCRIPTION: