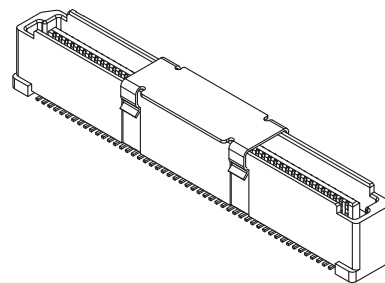


P.C. Board Layout
(Tolerance:±0.05)



Material and Plating:

Housing: LCP, 50% Glass Filled, UL94V-0, Natural Color.

Signal Contacts: Brass.

Gold Plated on Contact Area and 80u" Min Tin or Gold Flash Plated on Solder Tail over Nickel 50u" Min.

Electrical Characteristics:

Current Rating: 0.5 AMP.

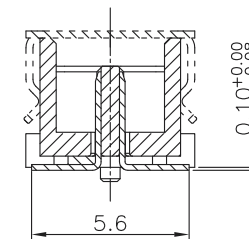
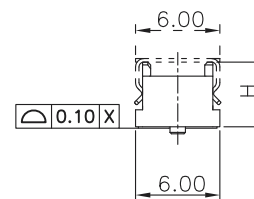
Dielectric Withstanding Voltage: AC 500V For 1 minute.

Insulator Resistance: 500MΩ min. at DC 250V.

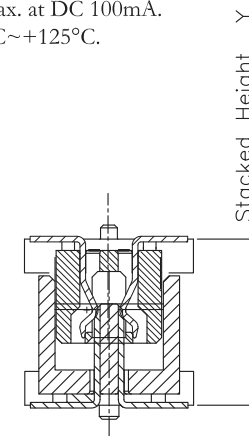
Contact Resistance: 30mΩ max. at DC 100mA.

Operating Temperature: -45°C~+125°C.

*RoHS Compliant



Section A-A
Scale: 2 : 1



** Available Position							
Code				Pos.	Dimension		
H1	H2	H3	H4		A	B	C
*				60	23.20	29.80	28.20
	*			80	31.20	37.80	36.20
			*	100	39.20	45.80	44.20
*				140	55.20	61.80	60.20

Code	1	2	3	4				
Height(H)	4.60	5.60	6.60	7.60				
Height(Y)	5.0	9.0	6.0	10.0	7.0	11.0	8.0	12.0

RoHS Compliant

TOLERANCES ARE



煜倫股份有限公司

www.morethanall.com

DRAWING BY CY

CHECKED BY GENIUS

UNIT / mm SCALE 1 : 1

DATE

SIZE A4

X. ± 0.50

.X ± 0.25

.XX ± 0.15

.XXX ±

ANG ±

PJECTION

照片框

ORDER INFORMATION

NP0837-PVxxP1C-xxx-LF

SERIES LEADFREE

060~140WAY

MALE POST

180°SMT 46: UNMATED HIGH 4.6mm

76: UNMATED HIGH 7.6mm

DESCRIPTION: Board to Board 0.8mm Male Type