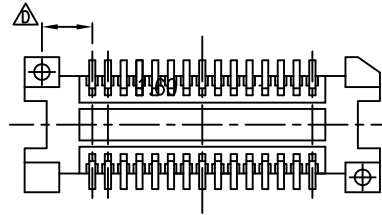
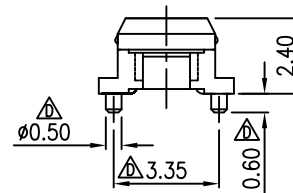
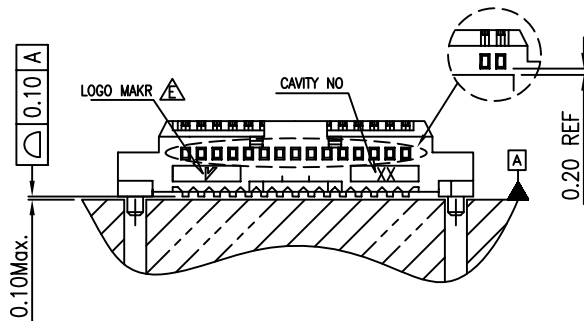


RECOMMENDED PCB LAYOUT  
(WITH BOSS WITHOUT FITTING NAIL)  $\Delta$



Notes:

1. Material:  
Housing is High Temperature Thermoplastic  
Terminal is Brass thickness is 0.15 mm
2. Plating:  
1.27  $\mu$ m min. Nickel over all  
Gold Flash all over
3. Coplanarity is 0.1 mm max. on datum A
4. True-position is 0.1 mm max. on datum B



P/N	Ckts	Dim A	Dim B	Dim C
NP0518-P07PCR-020	20	4.50	5.24	8.80
NP0518-P07PCR-030	30	7.00	7.74	11.30
NP0518-P07PCR-040	40	9.50	10.24	13.80
NP0518-P07PCR-050	50	12.00	12.74	16.30
NP0518-P07PCR-060	60	14.50	15.24	18.80
NP0518-P07PCR-070	70	17.00	17.74	21.30
NP0518-P07PCR-080	80	19.50	20.24	23.80

RoHS Compliant

TOLERANCES ARE

**MORETHANALL**  
PCB CONNECTORS  
Cable ASSEMBLIES

DRAWING BY CY

X.  $\pm$

CHECKED BY GENIUS

.X  $\pm$

UNIT / mm

SCALE 1 : 1

.XX  $\pm$

DATE

.XXX  $\pm$

SIZE A4

P PROJECTION  $\oplus$   $\ominus$

ANG  $\pm$

照片框

ORDER INFORMATION

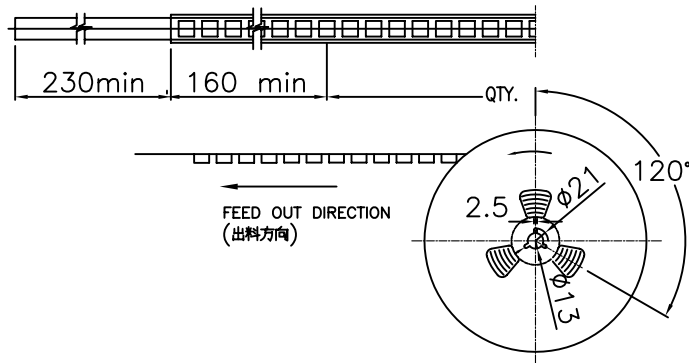
NP0518-P07PCR-xxx-LF

SERIES | | | | LEADFREE  
| | | | 020-080WAY  
| | | | REEL  
| | | | MYLAR  
MALE | POST UNMATED HIGH/ 0.7mm

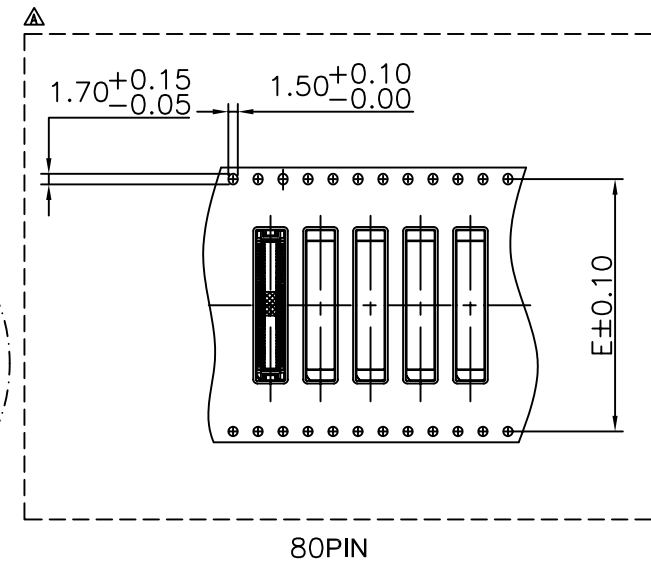
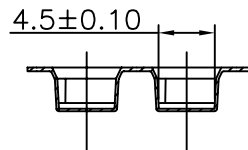
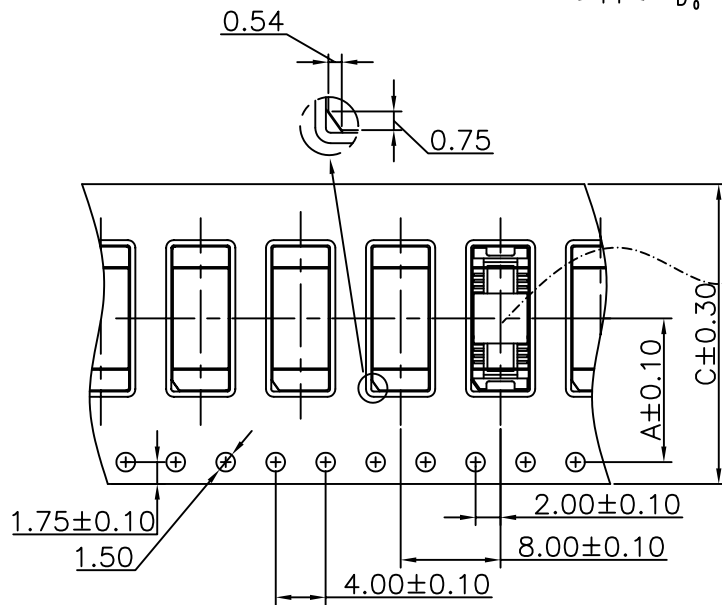
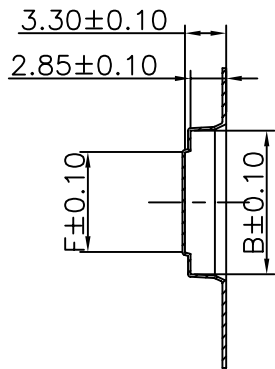
DESCRIPTION: 0.5 mm BTB SMT D/R Plug Type (insert molding)

煜倫股份有限公司

www.morethanall.com



CKT.	A	B	C	D	E	F
30	11.50	11.50	24.00	24.40	N/A	8.00
40		14.00				10.50
80	20.20	24.00	44.00	44.40	40.40	20.50



RoHS Compliant

TOLERANCES ARE

**MORETHANALL**  
PCB CONNECTORS  
Cable ASSEMBLIES

DRAWING BY CY

CHECKED BY GENIUS

UNIT / mm SCALE 1 : 1

DATE

SIZE A4

X, ±  
.X ±  
.XX ±  
.XXX ±  
ANG ±

PJECTION

照片框

ORDER INFORMATION

NP0518-P07PCR-xxx-LF

SERIES | | | | LEADFREE  
| | | | 020-080WAY  
| | | | REEL  
| | | | MYLAR  
MALE | POST UNMATED HIGH/ 0.7mm

煜倫股份有限公司

www.morethanall.com

DESCRIPTION: 0.5 mm BTB SMT D/R Plug Type (insert molding)