

SPECIFICATIONS:

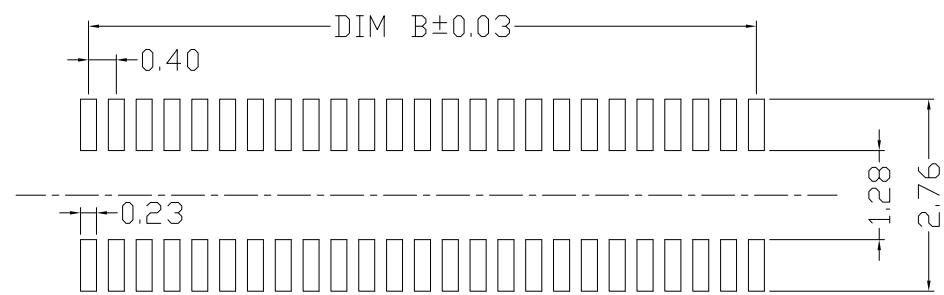
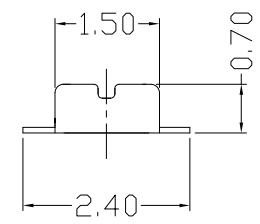
- 1.VOLTAGE/CURRENT RATING: 30V/0.3A AC;
- 2.WITHSTANDING VOLTAGE: 100V AC ONE MINUTE;
- 3.INSULATION RESISTANCE: 50MΩ MIN;
- 4.CONTACT RESISTANCE: 100mΩ MAX;
- 5.OPERATING TEMPERATURE RANGE: -35° C TO 85° C.

MATERIAL:

- 1.INSULATOR: LCP UL 94V-0 BLACK;
- 2.TERMINAL: COPPER ALLOY;
- 3.METAL FITTINGS: COPPER ALLOY.

PLATING:

- 1.TERMINAL: GOLD PLATING,
NICKEL 50u" MIN. OVER ALL;



RECOMMENDED PCB LAYOUT

PIN NO.	DIM A	DIM B
10	3.32	1.60
20	5.32	3.60
24	6.12	4.40
30	7.32	5.60
34	8.12	6.40
40	9.32	7.60
44	10.12	8.40
50	11.32	9.60

RoHS Compliant

TOLERANCES ARE



煜倫股份有限公司

www.morethanall.com

DRAWING BY CY
CHECKED BY GENIUS
UNIT / mm SCALE 1 : 1
DATE

X. ±
.X ± 0.30
.XX ± 0.20
.XXX ± 0.10
ANG ±

SIZE A4 PPROJECTION



ORDER INFORMATION

NP0415-P01X-xxx-LF
SERIES | LEADFREE
| 010-050WAY
| NON POST
| UNMATED HIGH 0.1mm
| PLUG

DESCRIPTION: BTB PH0.4MM H : 0.7MM HEADER