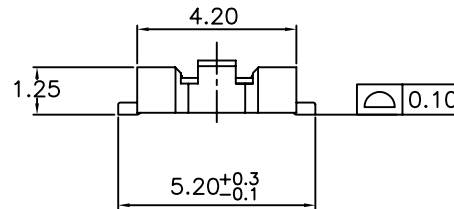
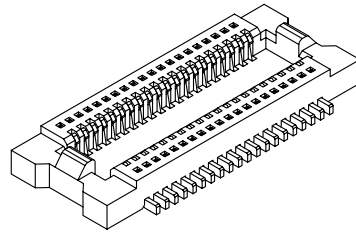


RECOMMENDED P.C.B. LAYOUT
TOLERANCE±0.05



Board-to-Board Offset
Application Example

Position Dimension	10 Thru 100
A	0.40 X No. of Positions /2+3.10
B	0.40 X No. of Positions /2+0.95
C	0.40 X No. of Positions /2-0.40

Material:

Housing: High temperature housing UL94V-0

Contacts: Phosphor Bronze.

Electrical Characteristics:

Current Rating: 0.5 AMP.

Dielectric Withstanding Voltage: AC 100V For 1 minute.

Insulator Resistance: 50MΩ min. at DC 100V.

Contact Resistance: 60mΩ max. at AC 1mA.

Operating Temperature: -55°C ~+85°C.

***RoHS Compliant**

RoHS Compliant

TOLERANCES ARE

MORETHANALL
PCB CONNECTORS
Cable ASSEMBLIES

煜倫股份有限公司

www.morethanall.com

DRAWING BY CY

CHECKED BY GENIUS

UNIT / mm

SCALE 1 : 1

DATE

SIZE A4

X. ±

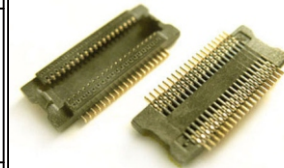
.X ±

.XX ±

.XXX ±

ANG ±

PJECTION



ORDER INFORMATION

NP04-S12X-xxx-LF

SERIES	LEADFREE
	010~100WAY
	NON POST
	UNMATED HIGH 1.2mm
MALE	

DESCRIPTION: