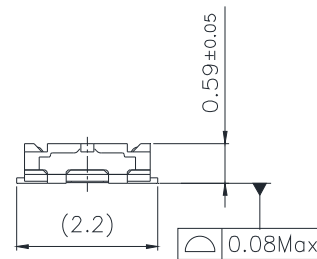
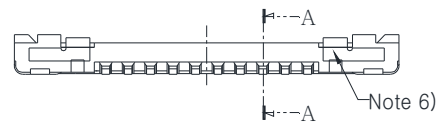
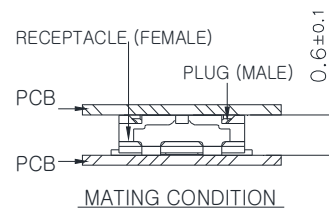
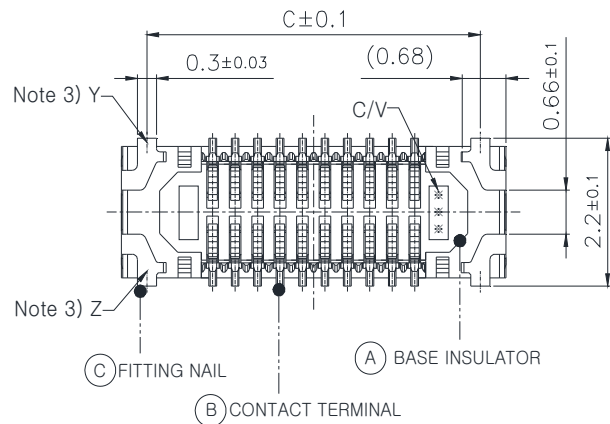


SECTION A-A (Scale 20:1)



【DIMENSION TABLE】

No.	TITLE	PINS	A	B	C	D
1	NP03514-S05XR-010	10	1.40	4.25	3.45	4.25
2	NP03514-S05XR-020	20	3.15	6.0	5.2	6.0
3	NP03514-S05XR-024	24	3.85	6.7	5.9	6.7
4	NP03514-S05XR-030	30	4.90	7.75	6.95	7.75
5	NP03514-S05XR-034	34	5.60	8.45	7.65	8.45



【TABLE】

No.	PART	MATERIAL	FINISH
A	BASE INSULATOR	LCP S471	Black color
B	CONTACT TERMINAL	Phosphor Bronze C5210-EH t:0.080mm	Nickel Barrier Contact : Au 0.1µm Min over Nickel 1µm Min Lead : Au flash over Nickel 1µm Min
C	FITTING NAIL	Phosphor Bronze C5210-EH t:0.080mm	Au flash over Nickel 1µm Min

RoHS Compliant

TOLERANCES ARE

MORETHANALL
PCB CONNECTORS
Cable ASSEMBLIES

DRAWING BY CY

X. ± 0.25

CHECKED BY GENIUS

.X ± 0.20

UNIT / mm

SCALE 1 : 1

.XX ± 0.10

DATE

.XXX ±

ANG ±

SIZE A4

PPOJECTION

照片框

ORDER INFORMATION

NP03514-S05XR-xxx-LF

SERIES

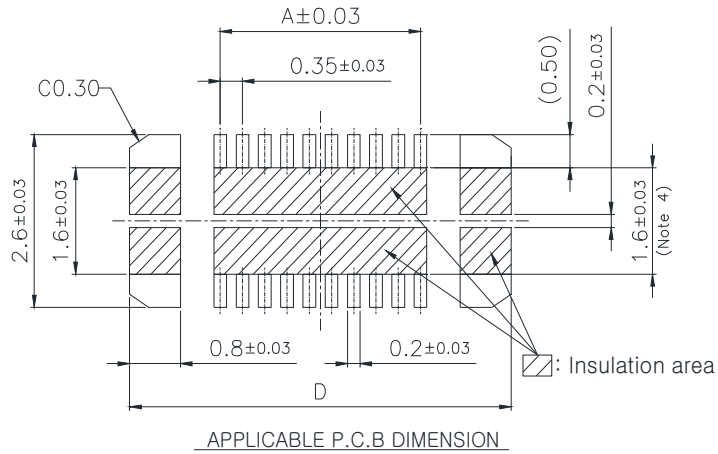
LEADFREE
10~34 WAY

REEL
NON POST
UNMATED HIGH 0.5mm
FEMALE

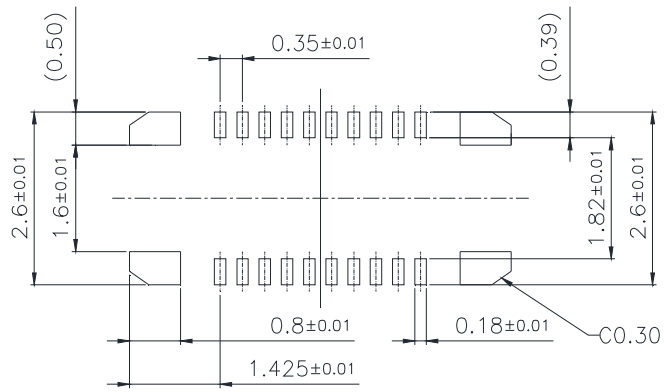
煜倫股份有限公司

www.morethanall.com

DESCRIPTION: BTB 0.35PITCH H=0.6mm RECEP'



<<Recommended window size of metal mask>>



METAL MASK THICKNESS : When $100 \mu\text{m}$
 (Terminal opening ratio : 70%)
 (Metal-part opening ratio : 100%)

【NOTE】

1. No rust, contamination, damage nor deformation effecting on function.
2. Lead co-planarity : Max 0.08mm
3. Before Re-flow lead co-planarity : Max 0.08mm
 After Re-flow lead co-planarity : Max 0.10mm
4. Because the fitting nail Y and Z are the unified structure, they are connected electrically.
5. Please don't reduce the inside pattern size less than this size because there is a possibility of solder creeping to the contact part.
6. There might be differences in the exposure state of the metal fitting nail except terminal portion. Please don't use these portion for inspection.
7. Window ratio is calculated by dividing window size of metal masking by the original mounting pad.

RoHS Compliant

TOLERANCES ARE

MORETHANALL
 PCB CONNECTORS
 Cable ASSEMBLIES

煜倫股份有限公司

www.morethanall.com

DRAWING BY CY

CHECKED BY GENIUS

UNIT / mm SCALE 1 : 1

DATE

SIZE A4

X. ± 0.25

.X ± 0.20

.XX ± 0.10

.XXX \pm

ANG \pm

PJECTION

照片框

ORDER INFORMATION

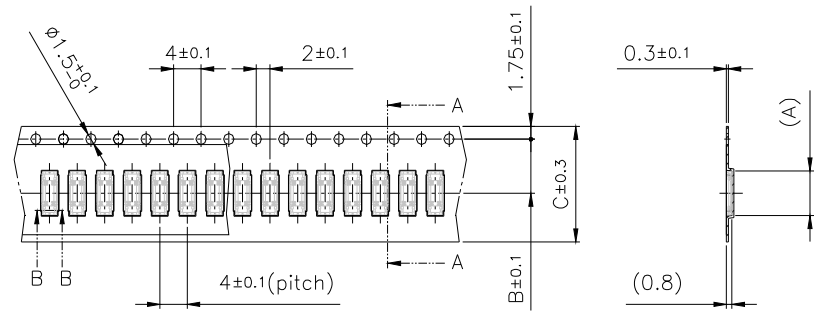
NP03514-S05XR-xxx-LF

SERIES | LEADFREE
 | 10-34 WAY
 REEL
 NON POST
 UNMATED HIGH 0.5mm
 FEMALE

DESCRIPTION: BTB 0.35PITCH H=0.6mm RECEPT'

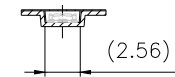


Scale 5:1

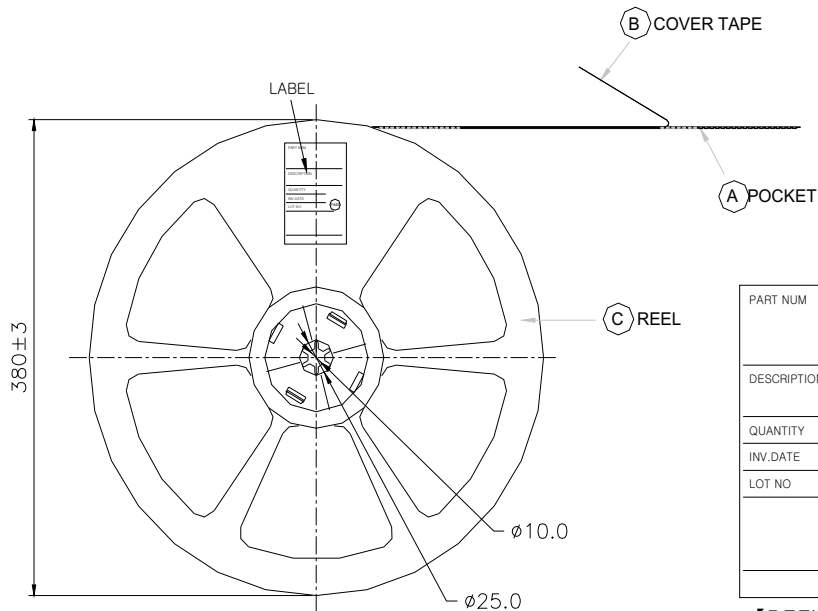


DETAIL X

SECTION A-A



SECTION B-B (Scale 2:1)



PART NUM
DESCRIPTION
QUANTITY
INV. DATE
LOT NO

【REEL LABEL】

【DIMENSION TABLE】

NO	TITLE	PINS	A	B	C	D
1	NP03514-S05XR-010	10	4.45	7.5	16	17.4
2	NP03514-S05XR-020	20	6.2	7.5	16	17.4
3	NP03514-S05XR-024	24	6.9	7.5	16	17.4
4	NP03514-S05XR-030	30	7.95	7.5	16	17.4
5	NP03514-S05XR-034	△ 34	8.65	11.5	24	25.4

【TABLE】

PART	(A) POCKET	(B) COVER TAPE	(C) REEL
MATERIAL	PS	PET	HIPS

RoHS Compliant

TOLERANCES ARE

MORETHANALL
PCB CONNECTORS
Cable ASSEMBLIES
煜倫股份有限公司

DRAWING BY CY
CHECKED BY GENIUS
UNIT / mm SCALE 1:1
DATE

X, ± 0.40
.X ± 0.30
.XX ±
.XXX ±
ANG ± 5°

照片框

ORDER INFORMATION

NP03514-S05XR-xxx-LF

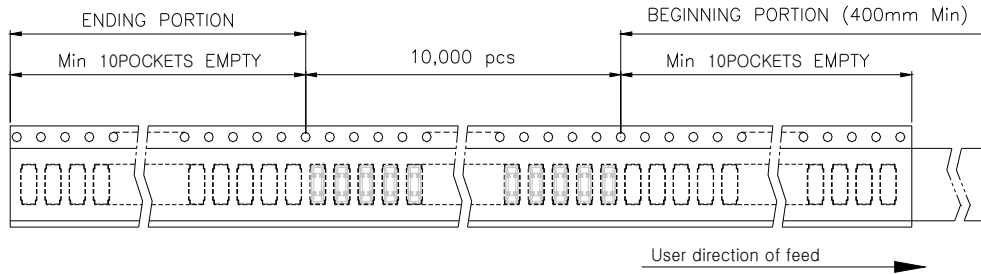
SERIES | | | | LEADFREE
10-34 WAY
REEL
NON POST
UNMATED HIGH 0.5mm
FEMALE

www.morethanall.com

SIZE A4 PPROJECTION

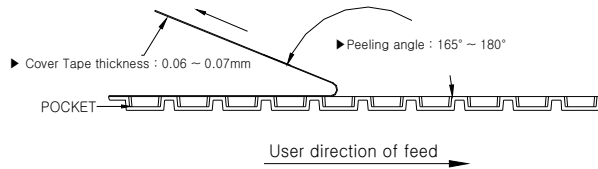
DESCRIPTION: BTB 0.35P H=0.6mm RECEP' PACK'G

【REFERENCE 1】

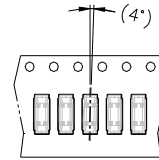


【REFERENCE 1】

- ▶ Peel strength of cover tape : 10~70gf
- ▶ Peeling speed : 300mm/minute



【REFERENCE 2】



◆ EMBOSS TAPE SPECIFICATION

【REFERENCE 1】

- Quantity : 10,000pcs / 1 Reel
- Beginning portion - Empty 10pockets min. Ending portion - Empty 10pockets min.
- It is thermal welding for connector post packaging method.
- Peel strength of cover tape : 10~70gf
- Peeling speed : 300mm/minute
- Peeling angle : 165° ~ 180°
- Cover Tape thickness : 0.06 ~ 0.07mm

【REFERENCE 2】

- Product angle in pocket would be tilt : (4.0°)

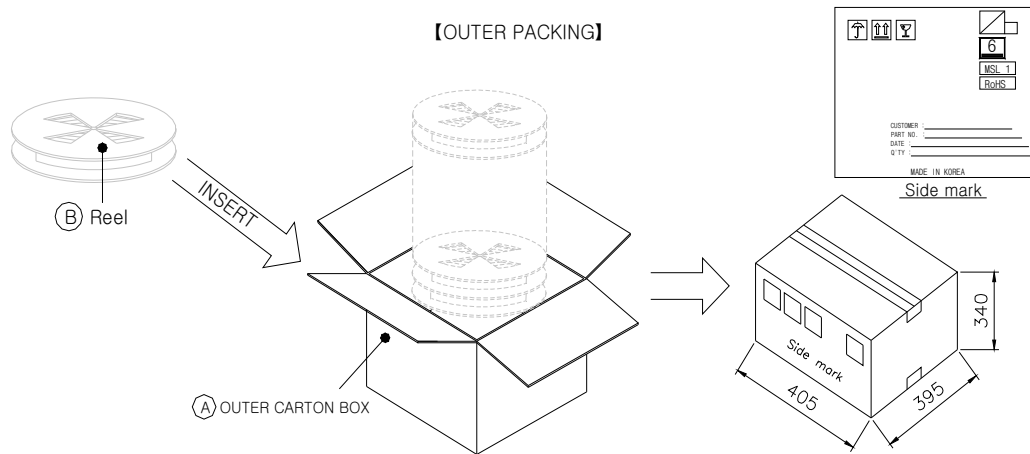
<< NOTE >>

- Reel 10,000ea packing.
- Outer box packing
 - ▷ 10p,20p,24p,30p : 10,000ea × 13reel = 130,000ea
 - △▷ 34p : 10,000ea × 10reel = 100,000ea
- Horizontal packing (Reel)
- Outer carton box size : 405(width) × 395(length) × 340(height)
- Reel - Adhesive of label.
- Outer box - Box label.

【MATERIAL TABLE】

CUSTOMER	NO.	PART	MATERIAL
CUSTOMER CODE	A	Outer carton box	Corrugated cardboard
EA	B	Reel	HIPS
YEAR . MONTH. DAY			

【OUTER PACKING】



RoHS Compliant

TOLERANCES ARE

MORETHANALL
PCB CONNECTORS
Cable ASSEMBLIES

煜倫股份有限公司

www.morethanall.com

DRAWING BY CY

CHECKED BY GENIUS

UNIT / mm SCALE 1 : 1

DATE

SIZE A4

X, ± 0.40

.X ± 0.30

.XX ±

.XXX ±

ANG ± 5°

PJECTION

照片框

ORDER INFORMATION

NP03514-S05XR-xxx-LF

SERIES

LEADFREE

10~34 WAY

REEL

NON POST

UNMATED HIGH 0.5mm

FEMALE

DESCRIPTION: BTB 0.35P H=0.6mm RECEP' PACK'G