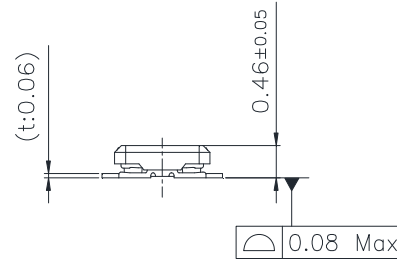
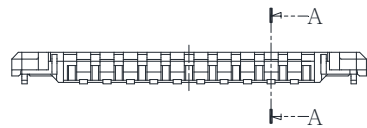


SECTION A-A (Scale 20:1)

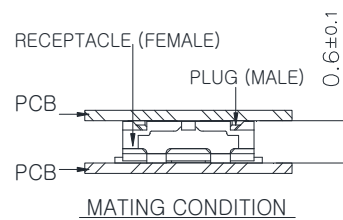
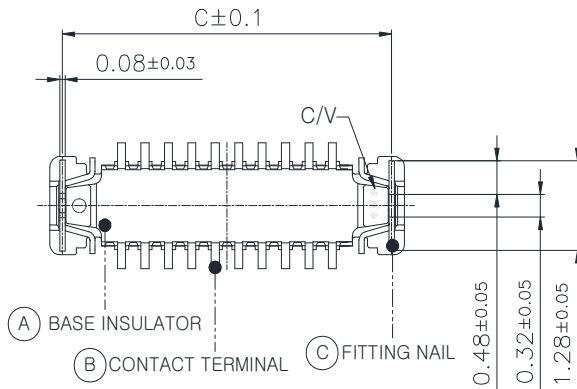


【DIMENSION TABLE】

No.	TITLE	PINS	A	B	C	D
1	NP03514-P01XR-010	10	1.40	3.55	3.17	3.17
2	NP03514-P01XR-020	20	3.15	5.3	4.92	4.92
3	NP03514-P01XR-024	24	3.85	6.0	5.62	5.62
4	NP03514-P01XR-030	30	4.90	7.05	6.67	6.67
5	NP03514-P01XR-034	△ 34	5.60	7.75	7.37	7.37

【TABLE】

No.	PART	MATERIAL	FINISH
A	BASE INSULATOR	LCP S475	Black color
B	CONTACT TERMINAL	Phosphor Bronze C5210-EH t:0.060mm	Nickel Barrier Contact : Au 0.1µm Min over Nickel 1µm Min Lead : Au flash over Nickel 1µm Min
C	FITTING NAIL	Phosphor Bronze C5240-EH t:0.080mm	Au flash over Nickel 1µm Min



MORETHANALL
PCB CONNECTORS
Cable ASSEMBLIES

煜倫股份有限公司

www.morethanall.com

RoHS Compliant

DRAWING BY CY

CHECKED BY GENIUS

UNIT / mm

SCALE 1 : 1

DATE

SIZE A4

TOLERANCES ARE

X. ± 0.25

.X ± 0.20

.XX ± 0.10

.XXX ±

ANG ±

PJECTION

照片框

ORDER INFORMATION

NP03514-P01XR-xxx-LF

SERIES

LEADFREE

10~34 WAY

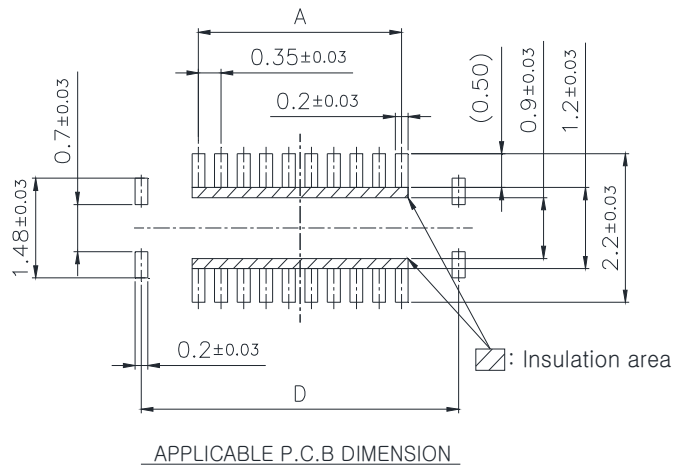
REEL

NON POST

UNMATED HIGH 0.1mm

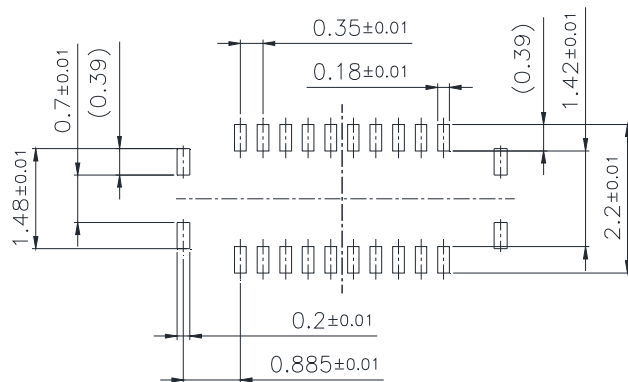
MALE

DESCRIPTION: BTB 0.35PITCH H=0.6mm PLUG



【NOTE】

<<Recommended window size of metal mask>>



METAL MASK THICKNESS : When 100 μ m
 (Terminal opening ratio : 70%)
 (Metal-part opening ratio : 100%)

1. No rust, contamination, damage nor deformation effecting on function.
2. Lead co-planarity : Max 0.08mm
3. Before Re-flow lead co-planarity : Max 0.08mm
 After Re-flow lead co-planarity : Max 0.10mm
4. Window ratio is calculated by dividing window size of metal masking by the original mounting pad.

RoHS Compliant

TOLERANCES ARE

MORETHANALL
 PCB CONNECTORS
 Cable ASSEMBLIES
 煜倫股份有限公司
 www.morethanall.com

DRAWING BY CY

CHECKED BY GENIUS

UNIT / mm

SCALE 1 : 1

DATE

SIZE A4

X. \pm 0.25

.X \pm 0.20

.XX \pm 0.10

.XXX \pm

ANG \pm

PJECTION

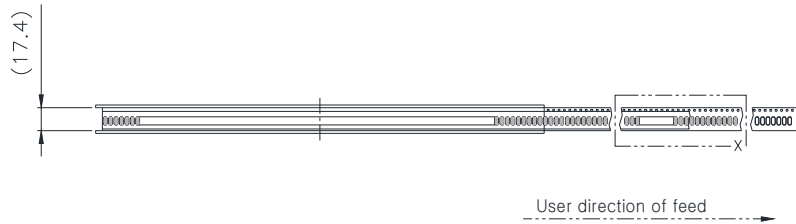
照片框

ORDER INFORMATION

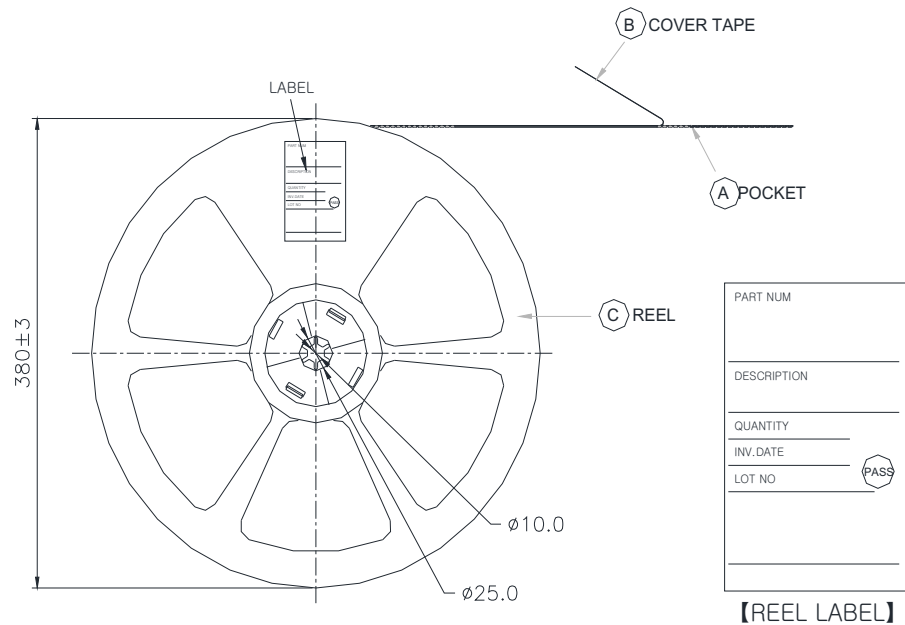
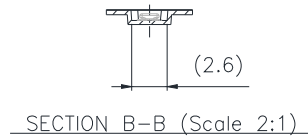
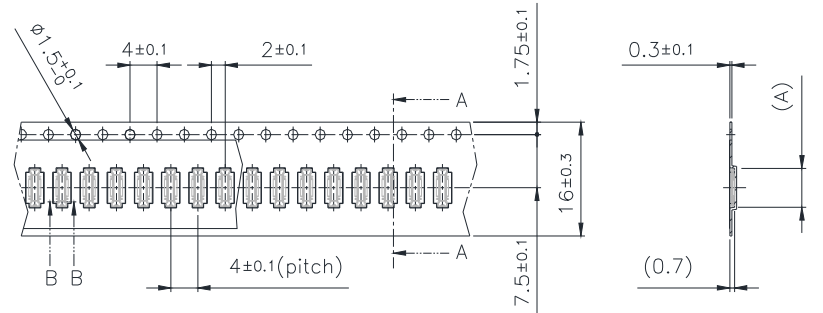
NP03514-P01XR-xxx-LF

SERIES | REEL | LEADFREE
 | | 10-34 WAY
 | | NON POST
 | | UNMATED HIGH 0.1mm
 MALE

DESCRIPTION: BTB 0.35PITCH H=0.6mm PLUG



Scale 5:1



【DIMENSION TABLE】

NO	TITLE	PINS	A
1	BM035-110B-C06-A	10	3.75
2	BM035-120B-C06-A	20	5.5
3	BM035-124B-C06-A	24	6.2
4	BM035-130B-C06-A	30	7.25
5	BM035-134B-C06-A	△ 34	7.95

RoHS Compliant

TOLERANCES ARE

MORETHANALL
PCB CONNECTORS
Cable ASSEMBLIES

DRAWING BY CY

X, ±

CHECKED BY GENIUS

.X ± 0.40

UNIT / mm

SCALE 1:1

.XX ± 0.30

DATE

.XXX ±

ANG ± 5°

SIZE A4

PJECTION

照片框

ORDER INFORMATION

NP03514-P01XR-xxx-LF

SERIES

LEADFREE

10-34 WAY

REEL

NON POST

UNMATED HIGH 0.1mm

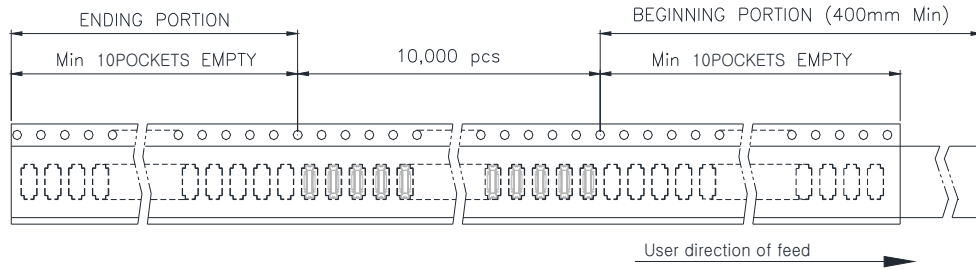
MALE

煜倫股份有限公司

www.morethanall.com

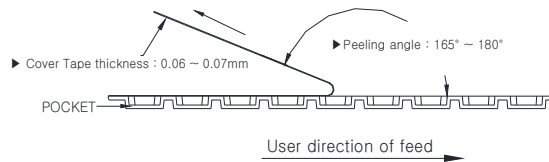
DESCRIPTION: BTB 0.35PITCH H=0.6mm PLUG

【REFERENCE 1】

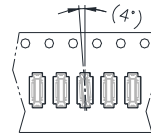


【REFERENCE 1】

- ▶ Peel strength of cover tape : 10~70gf
- ▶ Peeling speed : 300mm/minute



【REFERENCE 2】



◆ EMBOSS TAPE SPECIFICATION

【REFERENCE 1】

- Quantity : 10,000pcs / 1 Reel
- Beginning portion - Empty 10pockets min. Ending portion - Empty 10pockets min.
- It is thermal welding for connector post packaging method.
- Peel strength of cover tape : 10~70gf
- Peeling speed : 300mm/minute
- Peeling angle : 165° ~ 180°
- Cover Tape thickness : 0.06 ~ 0.07mm

【REFERENCE 2】

- Product angle in pocket would be tilt : (4.0°)

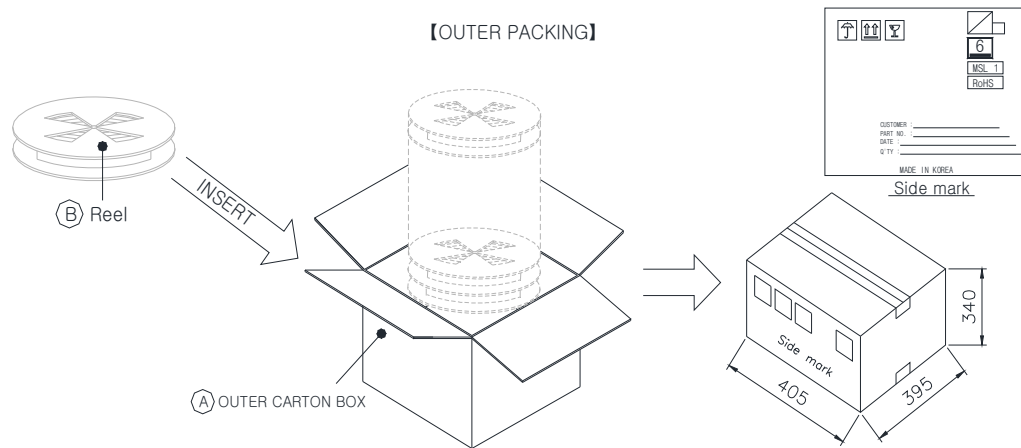
<< NOTE >>

- Reel 10,000ea packing.
- Outer box packing
△▷ 10p,20p,24p,30p,34p : 10,000ea × 13reel = 130,000ea
- Horizontal packing (Reel)
- Outer carton box size : 405(width) × 395(length) × 340(heigt ht)
- Reel - Adhesive of label.
- Outer box - Box label.

【MATERIAL TABLE】

CUSTOMER	NO.	PART	MATERIAL
CUSTOMER CODE	A	Outer carton box	Corrugated cardboard
EA	B	Reel	HIPS
YEAR . MONTH. DAY			

【OUTER PACKING】



RoHS Compliant

TOLERANCES ARE

MORETHANALL
PCB CONNECTORS
Cable ASSEMBLIES
煜倫股份有限公司
www.morethanall.com

DRAWING BY CY
CHECKED BY GENIUS
UNIT / mm SCALE 1 : 1
DATE
SIZE A4 PPROJECTION

X, ±
.X ± 0.40
.XX ± 0.30
.XXX ±
ANG ± 5°

照片框

ORDER INFORMATION

NP03514-P01XR-xxx-LF
SERIES REEL LEADFREE
10~34 WAY
NON POST
UNMATED HIGH 0.1mm
MALE

DESCRIPTION: BTB 0.35PITCH H=0.6mm PLUG