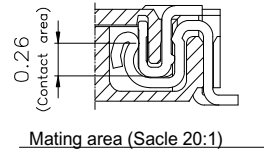
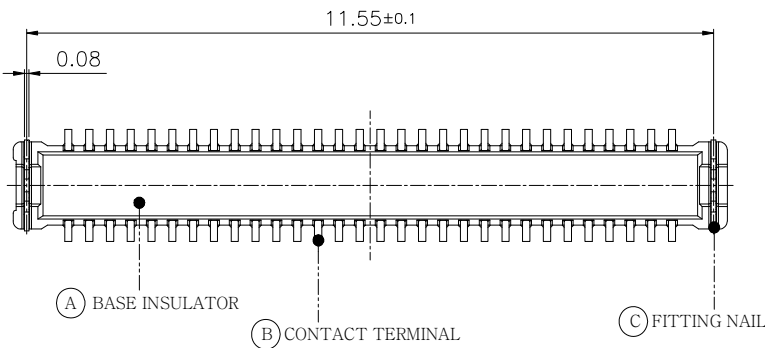


【NOTE】

- Lead co-planarity (Lead 평탄도) : ☆ Max 0.08mm (0.08mm 이하)
- After Re-flow lead co-planarity : ☆ Max 0.08mm (Reflow 후 평탄도 : ☆ 0.08mm 이하)
- 220°C Lead co-planarity (220°C Lead 평탄도) : Max 0.08mm (0.08mm 이하)
- ☆ = CTF (☆ 는 CTF 항목) / ★ = CTQ (★ 는 CTQ 항목)
- No rust, contamination, damage nor deformation effecting on function. (제품 기능 및 성능에 유해한 BURR, 변형, 휨, 이물질 등이 없을 것.)



【TABLE】

No.	PART	MATERIAL	FINISH
A	BASE INSULATOR	LCP SZ6505	Black color
B	CONTACT TERMINAL	Phosphor Bronze C5210-EH t:0.080mm	Nickel Barrier ☆Contact : Au 0.1~0.4µm over Nickel 1.5~5µm Lead : Au flash 0.05µm Min over Ni 1.5~5µm
C	FITTING NAIL	Phosphor Bronze C5210-H t:0.080mm	Sn 1.0~5.0µm over Nickel 1.0~5.0µm

【환경규제 준수】

(OQA-2049)에 지정된 환경관리 물질을 사용하지 말 것.

RoHS Compliant

TOLERANCES ARE

MORETHANALL
PCB CONNECTORS
Cable ASSEMBLIES

DRAWING BY CY

X. ± 0.25

CHECKED BY GENIUS

.X ± 0.20

UNIT / mm

SCALE 1 : 1

.XXX ±

DATE

ANG ±

煜倫股份有限公司

www.morethanall.com

SIZE A4

PJECTION

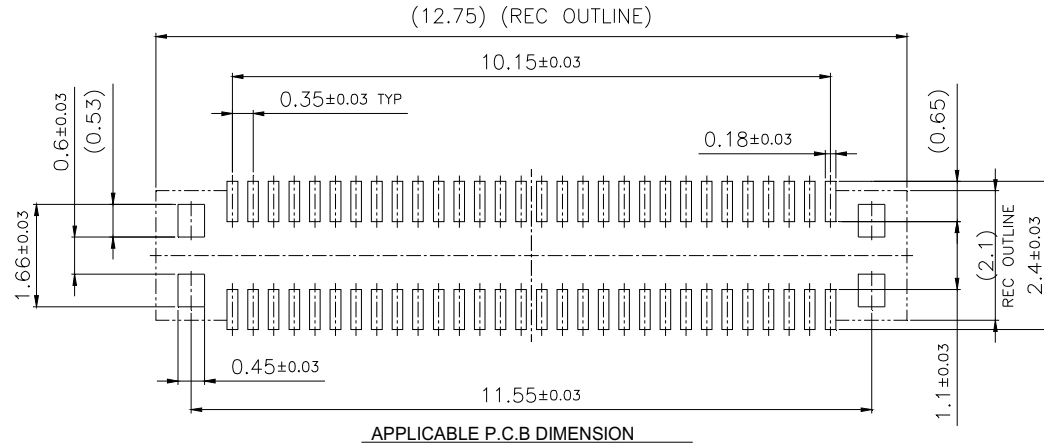
照片框

ORDER INFORMATION

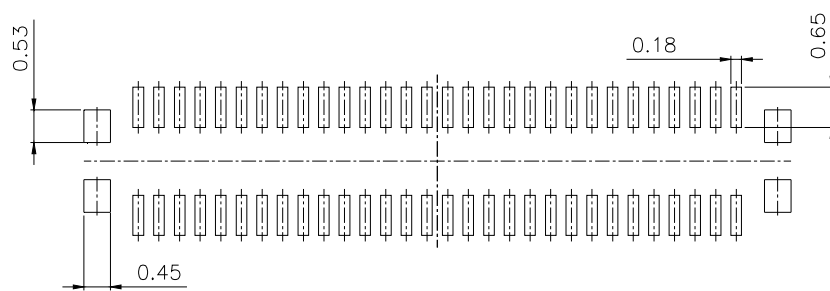
NP03514-P01XR-060-LF

SERIES | LEADFREE
60 WAY
REEL
NON POST
UNMATED HIGH 0.1mm
MALE

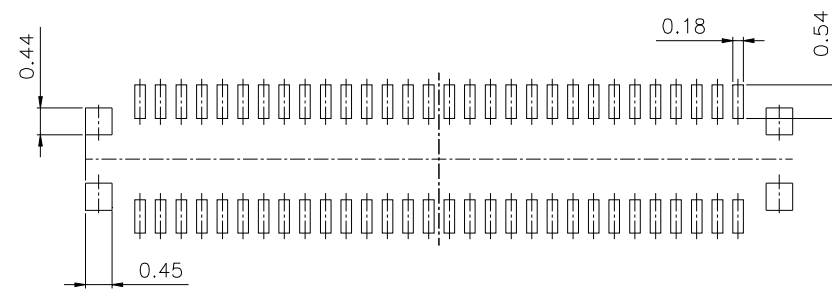
DESCRIPTION: BTB 0.35PITCH H=0.8mm PLUG



<<Recommended window size of metal mask>>



MASK (Thickness : 0.10mm)



MASK (Thickness : 0.12mm)

MORETHANALL
PCB CONNECTORS
Cable ASSEMBLIES
煜倫股份有限公司
www.morethanall.com

RoHS Compliant

DRAWING BY CY
CHECKED BY GENIUS
UNIT / mm SCALE 1 : 1
DATE
SIZE A4

TOLERANCES ARE

X ± 0.25
X ± 0.20
.XX ± 0.10
.XXX ±
ANG ±

照片框

PJECTION

ORDER INFORMATION

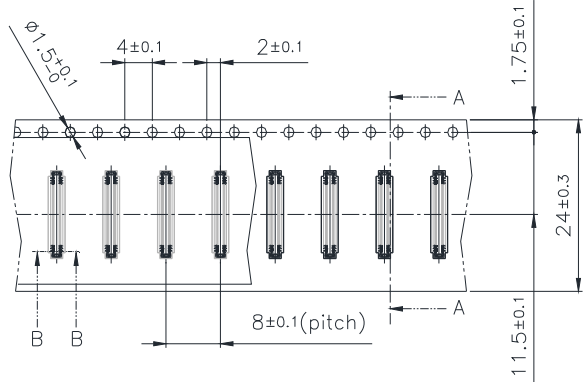
NP03514-P01XR-060-LF

SERIES REEL NON POST UNMATED HIGH 0.1mm
LEADFREE 60 WAY MALE

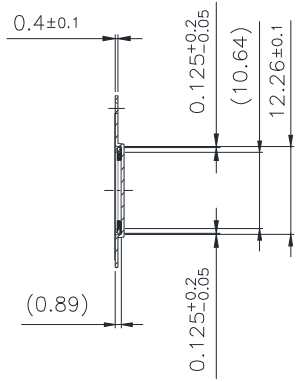
DESCRIPTION: BTB 0.35PITCH H=0.8mm PLUG



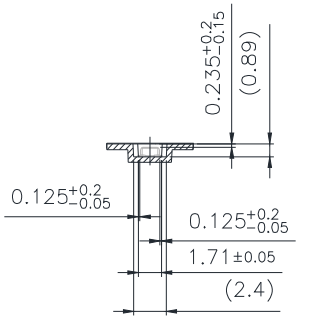
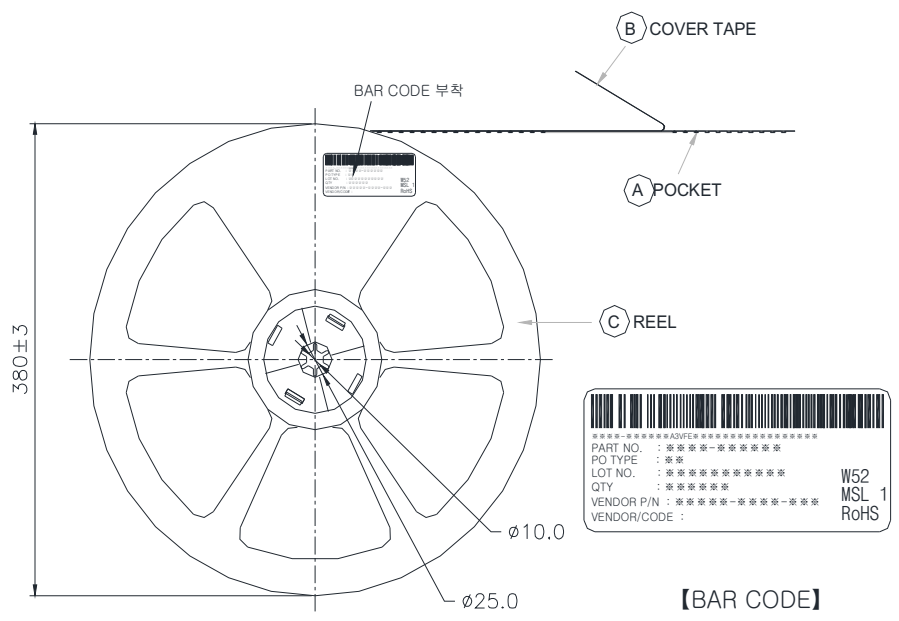
Scale 5:1



DETAIL X



SECTION A-A



SECTION B-B (Scale 2:1)

【TABLE】

PART	(A) POCKET	(B) COVER TAPE	(C) REEL
MATERIAL	PS	PET	HIPS

RoHS Compliant

TOLERANCES ARE

MORETHANALL
 PCB CONNECTORS
 Cable ASSEMBLIES

煜倫股份有限公司

www.morethanall.com

DRAWING BY CY		X. ± 0.25
CHECKED BY GENIUS		.X ± 0.20
UNIT / mm	SCALE 1:1	.XXX \pm
DATE		ANG \pm
SIZE A4	PJECTION	



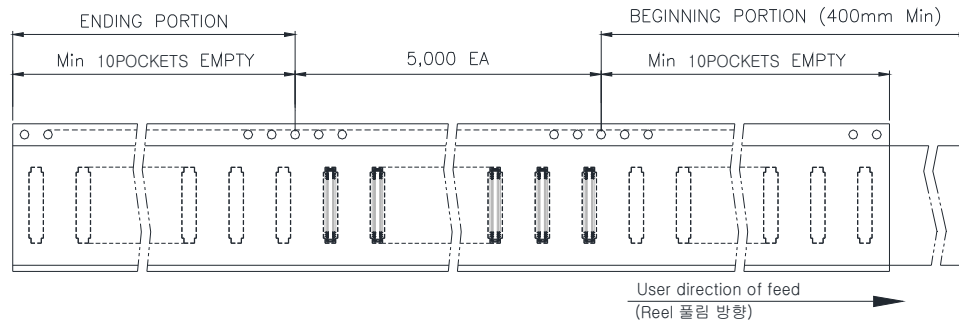
ORDER INFORMATION

NP03514-P01XR-060-LF

SERIES | REEL | LEADFREE
 | | 60 WAY
 | | REEL
 | | NON POST
 | | UNMATED HIGH 0.1mm
 | | MALE

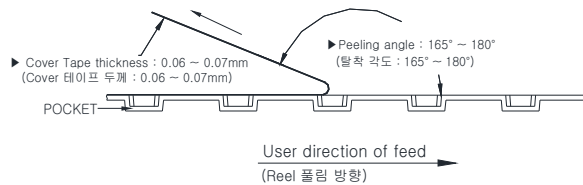
DESCRIPTION: BTB 0.35PITCH H=0.8mm PLUG PACK'G.

【REFERENCE 1】 (참조 1)

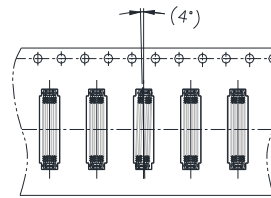


【REFERENCE 1】 (참조 1)

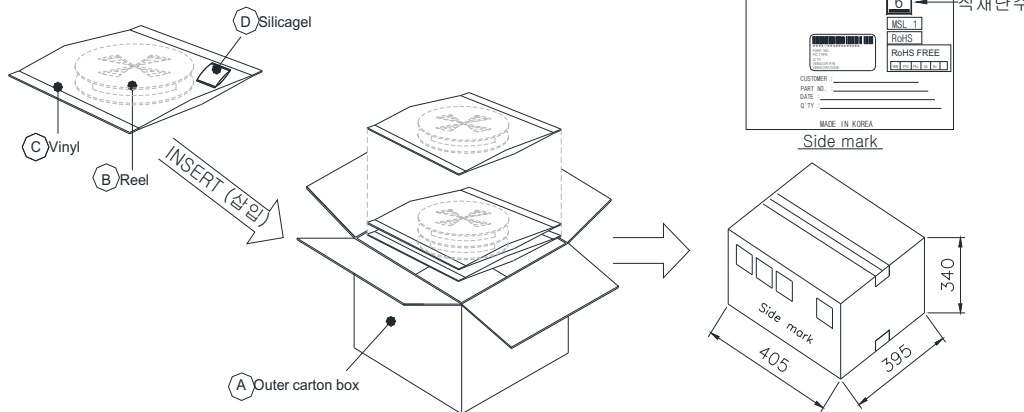
- ▶ Peel strength of cover tape : 10~70gf (Cover 테이프 탈착강도 : 10~70gf)
- ▶ Peeling speed : 300mm/minute (탈착 속도 : 300mm/분)



【REFERENCE 2】 (참조 2)



【OUTER PACKING】



◆ EMOSS TAPE SPECIFICATION (포장 규격)

【REFERENCE 1】 (참조 1)

- Quantity : 5,000ea / 1 Reel (수량 : 5,000ea / Reel)
- Beginning portion - Empty 10pockets min, Ending portion - Empty 10pockets min. (Reel 앞에서 10pockets 이상, 뒤에서 10pockets 이상 비울 것)
- It is thermal welding for connector post packaging method. (Connector 포장시 Cover tape 압착방식은 열융착 방식으로 한다.)
- Peel strength of cover tape : 10~70gf (Cover 테이프 강도 : 10~70gf)
- Peeling speed : 300mm/minute (속도 : 300mm/minute)
- Peeling angle : 165° ~ 180° (각도 : 165° ~ 180°)
- Cover Tape thickness : 0.06 ~ 0.07mm (Cover 테이프 두께 : 0.06 ~ 0.07mm)
- Confirm that Reel Cover Tape is treated with control material I Reel Cover Tape of static electricity (Reel Cover Tape 재전 처리 되어 있을 것.)
- The surface resistance must be in good condition. (control SPEC: $1 \times 10^5 \sim 10^9$) (표면저항 양호할 것(관리 SPEC: $1 \times 10^5 \sim 10^9$))
- Generation volume of static electricity : 100V and less (정전기 발생량 100V 이하 일것.)

ITEM (항 목)	표면 저항	정전기 발생량
Reel Cover Tape	$1 \times 10^5 \sim 1 \times 10^9$	100V
Carrier tape	$1 \times 10^5 \sim 1 \times 10^9$	100V

【REFERENCE 2】 (참조 2)

- Product angle in pocket would be tilt : (4.0°) (Emboss 내 부품 뒤틀림각도 : (4.0°))

<< NOTE >>

- Reel 5,000ea packing. (1Reel 5,000ea 포장)
- Reel 포장된 제품을 실리콘겔 삽입 후 진공 포장 한다.
- 진공포장 된 제품을 가로로 눕혀서 Outer carton box 에 포장 한다 .
▷ 1 outer carton box : 5,000ea × 10reel = 50,000ea
- Outer carton box size (외곽 포장 치수) : 405(width) × 395(length) × 340(height)
- Reel - Adhesive of Bar-Code & label.(Bar-Code 및 label 부착)
- Outer box (외곽포장박스) - Box label, 유해물질보증식별표시.

【MATERIAL TABLE】

NO.	PART	MATERIAL
A	Outer carton box	Corrugated cardboard
B	Reel	HIPS
C	Vinyl	Vinyl
D	SILICAGEL	SILICAGEL



RoHS Compliant

TOLERANCES ARE

DRAWING BY CY		X. ± 0.25
CHECKED BY GENIUS		.X ± 0.20
UNIT / mm	SCALE 1 : 1	.XXX ±
DATE		ANG ±
SIZE A4	PPOJECTION	

照片框

ORDER INFORMATION

NP03514-P01XR-060-LF
 SERIES | REEL | LEADFREE
 60 WAY
 NON POST
 UNMATED HIGH 0.1mm
 MALE

DESCRIPTION: BTB 0.35PITCH H=0.8mm PLUG PACK'G.

MORETHANALL
 PCB CONNECTORS
 Cable ASSEMBLIES
煜倫股份有限公司
 www.morethanall.com