

NOTES:

- MATERIAL:
 - HOUSING: HIGH TEMPERATURE THERMO PLASTIC UL94V-0
 - TERMINAL: COPPER ALLOY
 - SOLDER PEG: COPPER ALLOY
- FINISH:
 - TERMINAL:
 - CONTACT AREA: SEE CHARTS
 - SOLDERING AREA: SEE CHARTS
 - UNDER PL.: NICKEL PL. 50 μ" THK MIN.
- THIS PRODUCT DOESN'T CONTAIN ENVIRONMENTAL HAZARDOUS PER DIRECTIVE 2002/95/EC FOR RoHS COMPLIANT.

RoHS Compliant

TOLERANCES ARE

MORETHANALL
PCB CONNECTORS
Cable ASSEMBLIES

煜倫股份有限公司

www.morethanall.com

DRAWING BY CY

CHECKED BY GENIUS

UNIT/mm SCALE 1:1

DATE

SIZE A4

X, ±
.X ±
.XX ±
.XXX ±
ANG ±

PJECTION

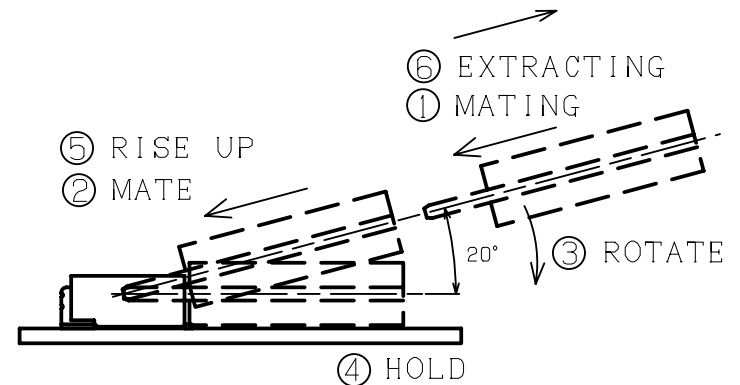
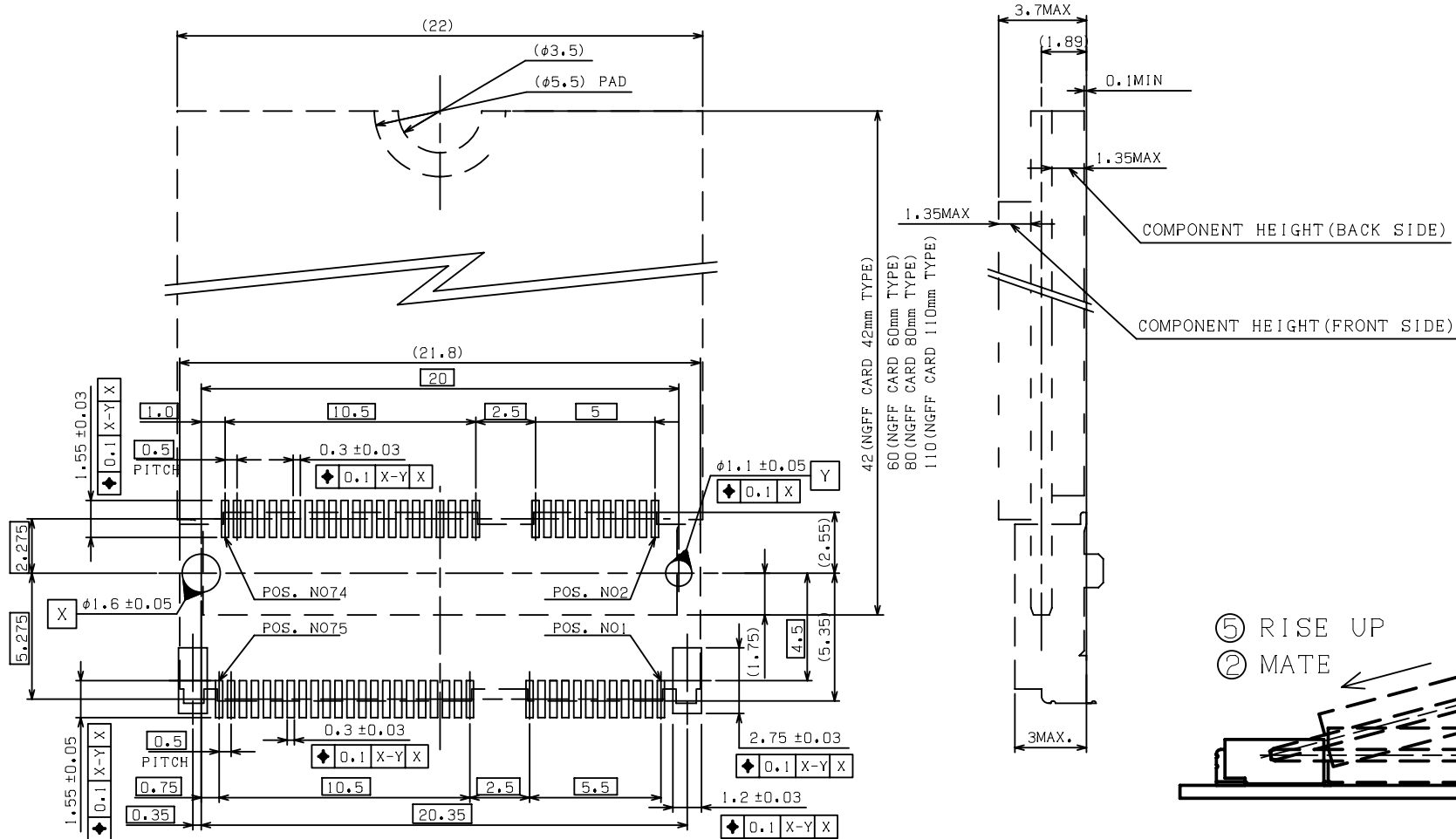
照片框

ORDER INFORMATION

NGFF-W32R-2344-LF

SERIES | | | LEADFREE
23+44 WAY
REEL
HIGH 3.2mm
90°SMT

DESCRIPTION:



KEY ID "E"
RECOMMENDED P.C. BOARD LAYOUT

RoHS Compliant

TOLERANCES ARE

MORETHANALL
PCB CONNECTORS
Cable ASSEMBLIES

DRAWING BY CY

X, ±

CHECKED BY GENIUS

.X ±

UNIT / mm

SCALE 1:1

.XX ±

DATE

.XXX ±

ANG ±

SIZE A4

PJECTION

照片框

ORDER INFORMATION

NGFF-W32R-2344-LF

SERIES

LEADFREE

23+44 WAY

REEL

HIGH 3.2mm

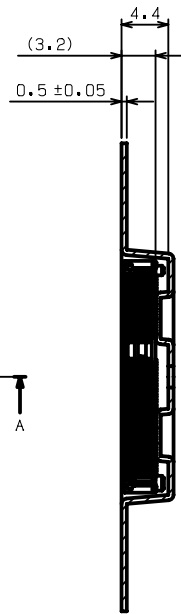
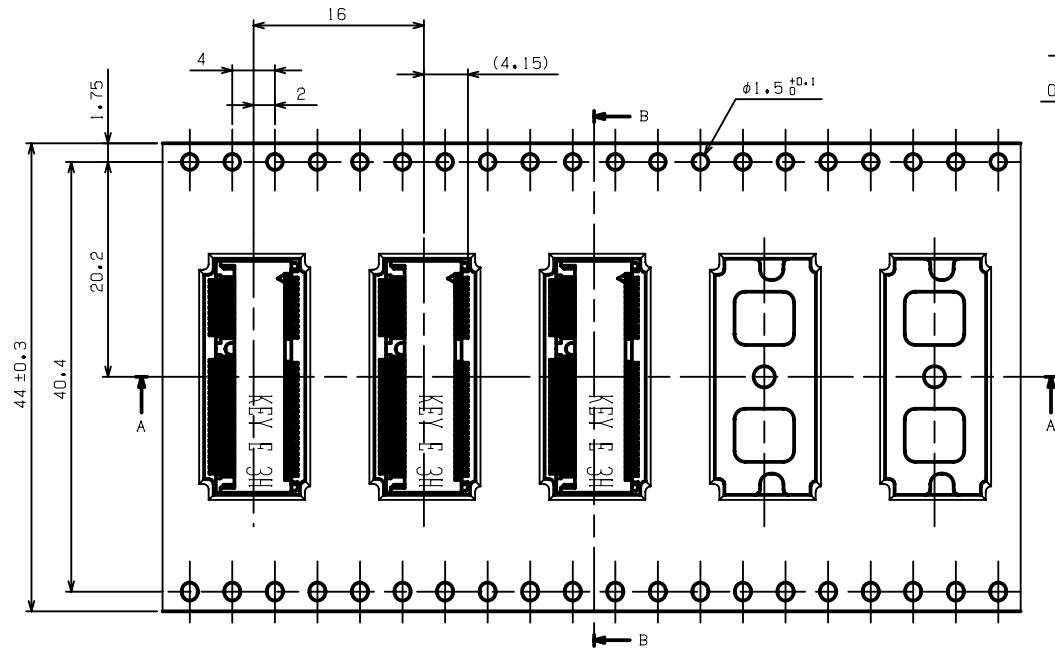
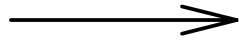
90°SMT

煜倫股份有限公司

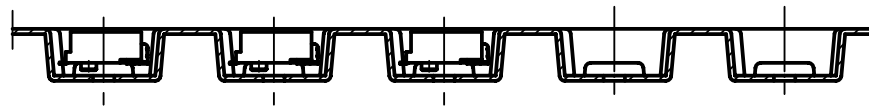
www.morethanall.com

DESCRIPTION:

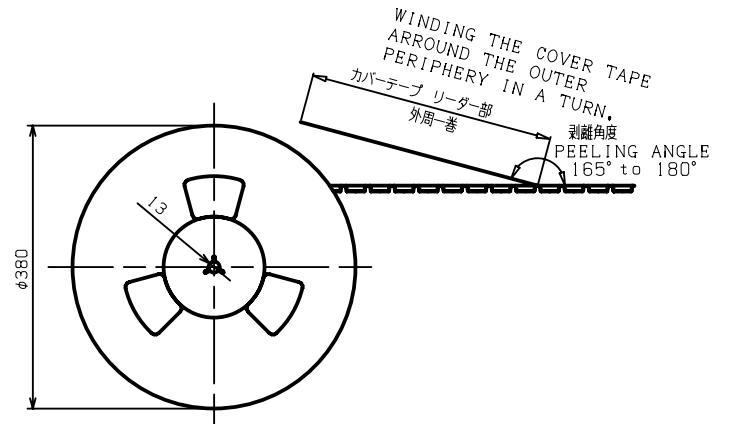
DIRECTION OFF TOP OF REEL



SECT B-B



SECT A-A



NOTES:

1. THE DIRECTION OF EACH CONNECTOR ON A EMOSS IS REFERED TO THIS DRAWING.
2. GENERAL TOLERANCE : ± 0.5 , $\pm 3^\circ$
3. PACKAGED IN EMOSS TAPE AND PLASTIC REEL 1200 PCS PRE REEL.

RoHS Compliant

TOLERANCES ARE

MORETHANALL
PCB CONNECTORS
Cable ASSEMBLIES

煜倫股份有限公司

www.morethanall.com

DRAWING BY CY

CHECKED BY GENIUS

UNIT / mm

SCALE 1 : 1

DATE

SIZE A4

X, \pm
.X \pm
.XX \pm
.XXX \pm
ANG \pm

PJECTION

照片框

ORDER INFORMATION

NGFF-W32R-2344-LF

SERIES | | LEADFREE
23+44 WAY
REEL
HIGH 3.2mm
90°SMT

DESCRIPTION: