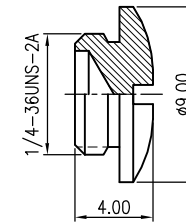
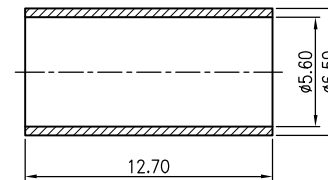


9.CAP



10.FERRULE



Recommended Crimping
Dimensions for Ferrule

ITEM	DESCRIPTION	MATERIAL	FINISH	Q'TY	PART NUMBER
10	FERRULE	BRASS	NICKEL	1	F-65/56-127-N
9	CAP	BRASS	NICKEL	1	CAP-009
8	GASKET	SI-RUBBER	RED	1	GASKET-15.6*8*1.5-SI
7	RETAINER RING	BRASS	NONE	1	COPPER-COIN-19*2
6	SHELL	BRASS	NICKEL	1	S-01
5	CHASSIS	BRASS	NICKEL	1	E-01001
4	BODY	BRASS	NICKEL	1	B-01059-46/31
3	PIN	BRASS	GOLD	1	C-01040
2	INSULATOR	TEFLON	NONE	1	T-01028
1	BODY	BRASS	NICKEL	1	B-01058

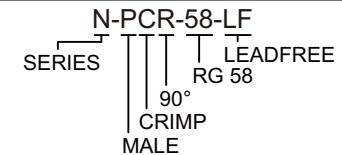
RoHS Compliant

TOLERANCES ARE

ANGLES = ± 3°
 0.5~6 = ± 0.1
 6~40 = ± 0.2
 40~120 = ± 0.6
 120~315 = ± 1.0
 ABOVE 315 = ± 1.6

照片框

ORDER INFORMATION



MORETHANALL
 PCB CONNECTORS
 Cable ASSEMBLIES

煜倫股份有限公司

www.morethanall.com

DRAWING BY CY
 CHECKED BY GENIUS
 UNIT / mm SCALE 1 : 1
 DATE

SIZE A4 PPROJECTION

DESCRIPTION: N R/A MALE CRIMP FOR RG-58U