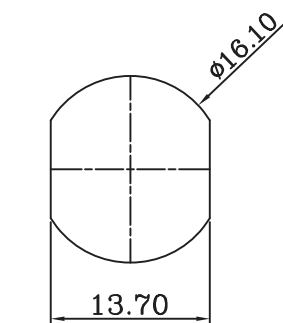


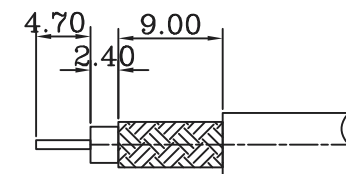
1. CRIMPED FERRULE HEX CRIMP SIZE .213"

2. CONTACT PIN TO SOLDER

9	FERRULE	BRASS	1	NICKEL PLATED
8	CONTACT PIN	BRASS	1	GOLD PLATED
7	REAR BODY	BRASS	1	NICKEL PLATED
6	INSULATOR	TEFLON	1	WHITE
5	INSULATOR	TEFLON	1	WHITE
4	BODY	BRASS	1	NICKEL PLATED
3	GASKET	SILICONE	1	RED
2	LOCK WASHER	BRASS	1	NICKEL PLATED
1	NUT	BRASS	1	NICKEL PLATED
ITEM	DESCRIPTION	MATERIAL	Q'TY	FINISHED



RECOMMENDED
MOUNTING HOLE



RECOMMENDED
CABLE STRIPPING DIM'S

RoHS Compliant

TOLERANCES ARE

MORETHANALL
PCB CONNECTORS
Cable ASSEMBLIES

煜倫股份有限公司

www.morethanall.com

DRAWING BY CY

CHECKED BY GENIUS

UNIT / mm

SCALE 1 : 1

DATE

SIZE A4

PPOJECTION

0 DEC. PLACE ±0.5
1 DEC. PLACE ±0.2
2 DEC. PLACE ±0.1
ANGLES ±1°

照片框

ORDER INFORMATION

N-JCPBNOW-58-LF
SERIES JACK CRIMP PANEL NUT BACK
LEADFREE RG58 WASHER RING

DESCRIPTION: N PANEL MOUNT BULKHEAD FOR RG58 CABLE