

MATERIAL:

HOUSING: PBT,UL94V-0,BLACK.
 TERMINALS BRACKET: PBT,UL94V-0,BLACK.
 SHIELD: C2680,T=0.20MM,NICKEL PLATING ON ALL AREA.
 TERMINAL: PHOSPHOR BRONZE C5210,T=0.35MM,
 6U" GOLD PLATING ON CONTACT AREA.

MECHANICAL:

DURABILITY: 750 CYCLES MIN.
 MATING FORCE: 23N MAX.
 OPERATING TEMPERATURE: -40°C~+85°C.
 STORAGE TEMPERATURE: -40°C~+85°C.
 ALL CRITICAL DIMENSIONS WITH "*"

MORETHANALL
 PCB CONNECTORS
 Cable ASSEMBLIES
 煜倫股份有限公司
 www.morethanall.com

RoHS Compliant

DRAWING BY CY
 CHECKED BY GENIUS
 UNIT / mm SCALE 1 : 1
 DATE
 SIZE A4 PPROJECTION

TOLERANCES ARE

X, ±
 .X ± 0.35
 .XX ± 0.25
 .XXX ± 0.15
 ANG ±

照片框

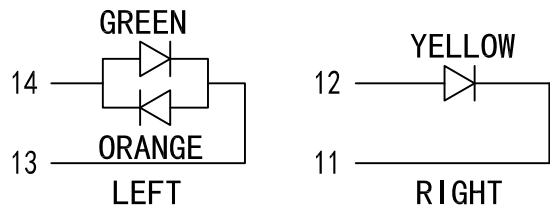
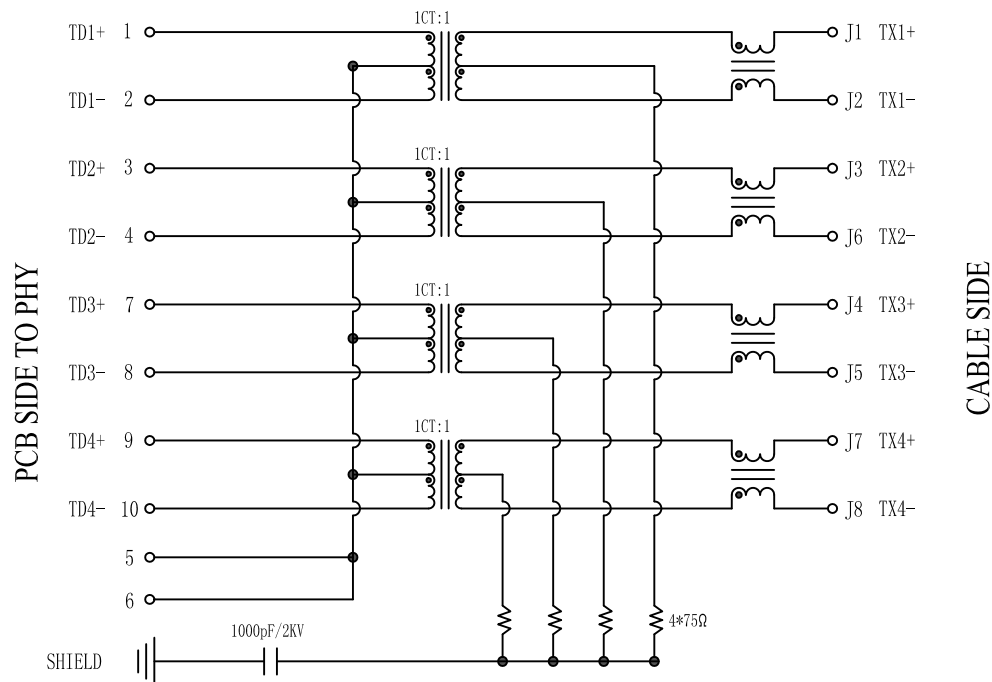
ORDER INFORMATION

MJDF16T056UL-KX06B38GOYX-0808

SERIES

8P8C
 LEFT / RIGHT
 GREEN ORANGE / YELLOW
 REAR TAB 3.89mm
 BLACK 06u" GOLD
 NON EAR

DESCRIPTION: RJF1000M 180度



Electrical:

- Turn ratio: 1~2: J1~J2=1CT:1CT(±2%).
3~4: J3~J6=1CT:1CT(±2%).
7~8: J4~J5=1CT:1CT(±2%).
9~10: J7~J8=1CT:1CT(±2%).
- OCL: 350uH Min. at 100KHz 100mV 8mA DC.
- Insertion Loss: -1.0 dB Max 1~100MHz.
- Return loss: -18dB Min 1~30MHz;
-14dB Min 30~60MHz.
-12dB Min 60~80MHz.
-10dB Min 80~100MHz.
- Cross talk: -40dB Min 1~30MHz;
-35dB Min 30~60MHz;
-30dB Min 60~100MHz;
- CMR: -30dB Min 1~100MHz;
- Hi-Pot: 2250V DC 6S 1mA PRI TO SEC

LED Specification

Standard LED Color	LED Wavelength	Foward(A)	Foward(V)
Green	568nm	20mA	1.85-2.45V
Orange	585nm	20mA	1.7-2.2V
Yellow	585nm	20mA	1.7-2.2V

RoHS Compliant

TOLERANCES ARE

MORETHANALL
PCB CONNECTORS
Cable ASSEMBLIES

DRAWING BY CY

X, ±

CHECKED BY GENIUS

.X ± 0.35

UNIT / mm

SCALE 1 : 1

.XX ± 0.25

.XXX ± 0.15

DATE

ANG ±

照片框

煜倫股份有限公司

www.morethanall.com

SIZE A4

PPOJECTION

ORDER INFORMATION

MJDF16T056UL-KX06B38GOYX-0808

SERIES

BLACK

06u" GOLD

NON EAR

8P8C

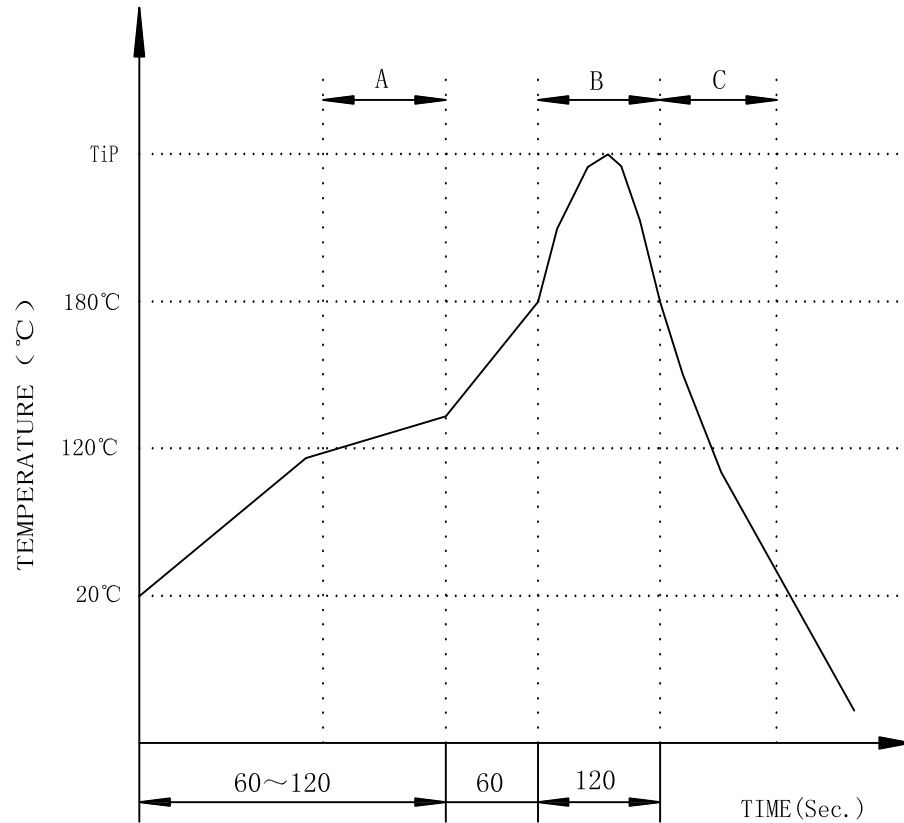
LEFT / RIGHT

GREEN ORANGE / YELLOW

REAR TAB 3.89mm

DESCRIPTION: RJF1000M 180度

PROFILE OF WAVE SOLDER



A.Preheating B.Soldering C.Gradual Cooling
 Tip temperature:260±5°C.
 Tip temperature time:5Sec Max.
 Tip melting point of Sn96.5/Ag3/Cu0.5:217°C.

Remarks: after wave soldering, the plastic positioning columns of the product which under the PCB will be slightly melted, but it won't affect its function.

RoHS Compliant

TOLERANCES ARE

MORETHANALL
 PCB CONNECTORS
 Cable ASSEMBLIES

DRAWING BY CY

CHECKED BY GENIUS

UNIT / mm

SCALE 1 : 1

DATE

SIZE A4

X, ±
 .X ± 0.35
 .XX ± 0.25
 .XXX ± 0.15
 ANG ±

PJECTION

照片框

ORDER INFORMATION

MJDF16T056UL-KX06B38GOYX-0808

SERIES

8P8C
 LEFT / RIGHT
 GREEN ORANGE / YELLOW
 REAR TAB 3.89mm
 BLACK 06u" GOLD
 NON EAR

煜倫股份有限公司

www.morethanall.com

DESCRIPTION: RJF1000M 180度