

### SPECIFICATION:

#### 1. ELECTRICAL

- 1.1 Current Rating: 0.5A DC/AC
- 1.2 Voltage Rating: 10VDC/AC
- 1.3 Contact Resistance:
  - P1~P8: 100mΩ Max.
  - CD: 140mΩ Max.
- 1.4 Insulation Resistance: 1000MΩ Min.
- 1.5 Dielectric Withstanding Voltage: 500VAC for 1 minute

#### 2. MECHANICAL

- 2.1 Durability: 5,000 Cycle
- 2.2 Insertion Force: 10NMax.
- 2.3 Extraction Force: 0.5NMin.

#### 3. ENVIRONMENTAL

- 3.1 Operating temperature range: -25°C~+85°C
- 3.2 Storage temperature range: -25°C~+85°C

NO.	PART NAME	DESCRIPTION
6	SLIDER	LCP E130i, UL94V-0, Black
5	SHELL	SUS304CSP-3/4H, 0.15t, 50u" nickel plated
4	CRANK	SUS304, 0.35d
3	SPRING	SWP-B, 0.20d, 80u" copper coating over 65u" nickel plated
2	CONTACT	C5210R-H, 0.12t, 5u" gold on contact area 1u" gold on tail area, under plated: 50u" nickel
1	HOUSING	LCP E130i, UL94V-0, Black

照片框

RoHS Compliant

TOLERANCES ARE

**MORETHANALL**  
PCB CONNECTORS  
Cable ASSEMBLIES

DRAWING BY CY

X. ± 0.50

CHECKED BY GENIUS

.X ± 0.25

UNIT / mm

SCALE 1 : 1

.XX ± 0.12

DATE

.XXX ±

ANG ±

SIZE A4

PJECTION

ORDER INFORMATION

MISCP-W16MBAR-08-LF

SERIES

LEADFREE

08 WAY

REEL

SWITCH CLOSED

BOTTOM CONTACT

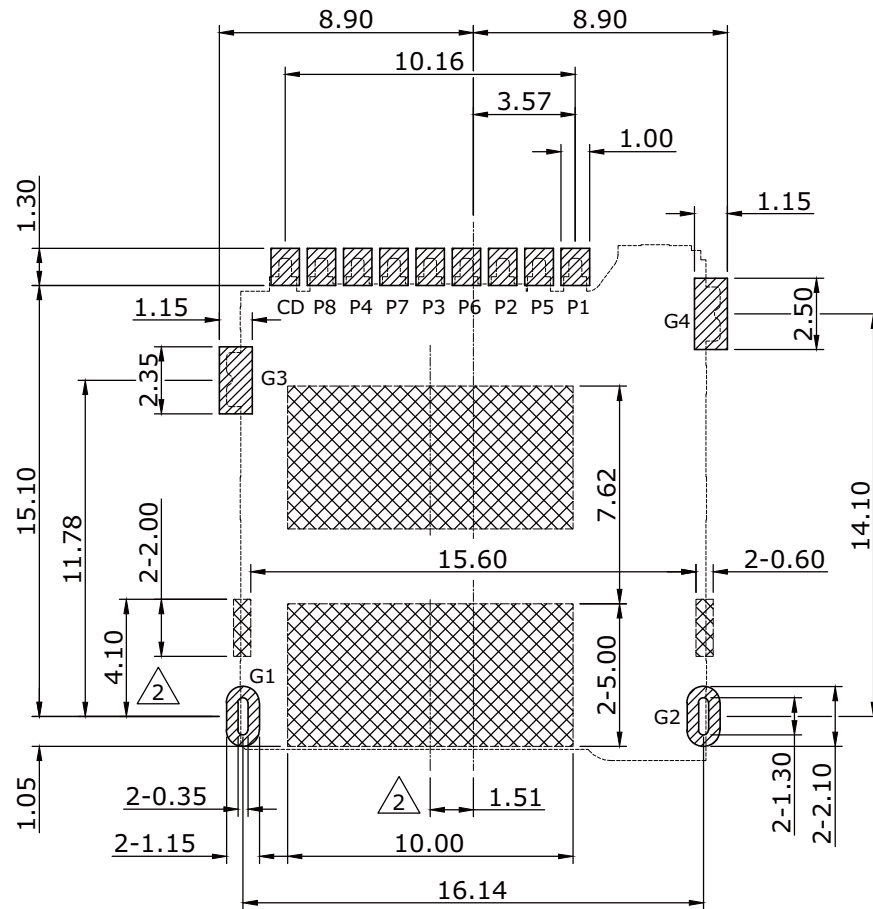
16.14mm METAL FOOT


90°SMT

DESCRIPTION: Micro SIM Card Socket push-push type

煜倫股份有限公司

www.morethanall.com



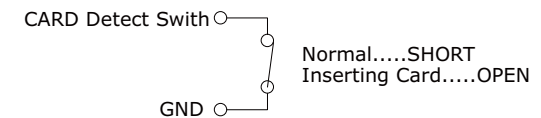
 There should not be any circuits in layout area of the products.

Recommended PCB layout  
General Tolerance  $\pm 0.05$

Connector terminal NO.	Pin Name
PIN 1	VCC:PWR signal and GND
PIN 2	RST:Reset signal
PIN 3	CLK:Clocking signal
PIN 4	Reserved
PIN 5	GND:PWR signal and GND
PIN 6	VPP:programming Voltage
PIN 7	I/O:serial data input/output
PIN 8	Reserved

G1~G4	GND
CD	CARD DETECTOR

Circuit Diagram for Card Detect Switch



**MORETHANALL**  
PCB CONNECTORS  
Cable ASSEMBLIES

煜倫股份有限公司

www.morethanall.com

RoHS Compliant

TOLERANCES ARE

DRAWING BY CY

X.  $\pm 0.50$

CHECKED BY GENIUS

.X  $\pm 0.25$

UNIT / mm

SCALE 1 : 1

.XXX  $\pm$

DATE

ANG  $\pm$

SIZE A4

PPOJECTION 

照片框

ORDER INFORMATION

MISCP-W16MBAR-08-LF

SERIES

LEADFREE

08 WAY

REEL

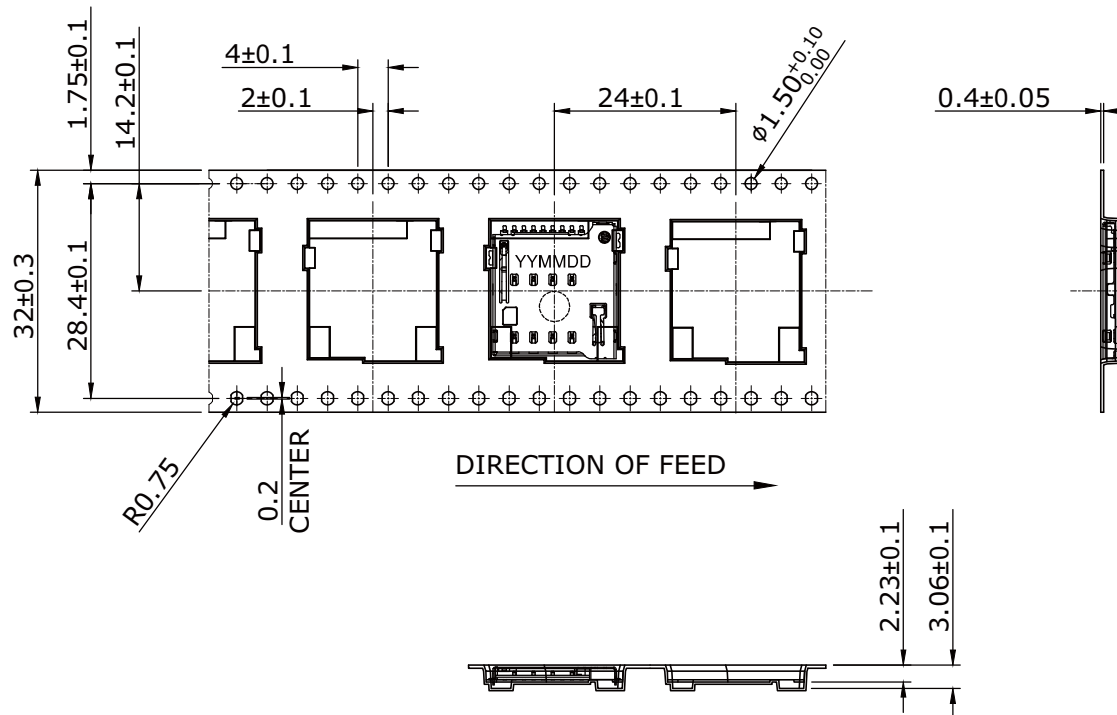
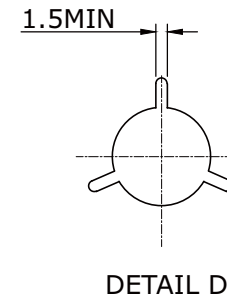
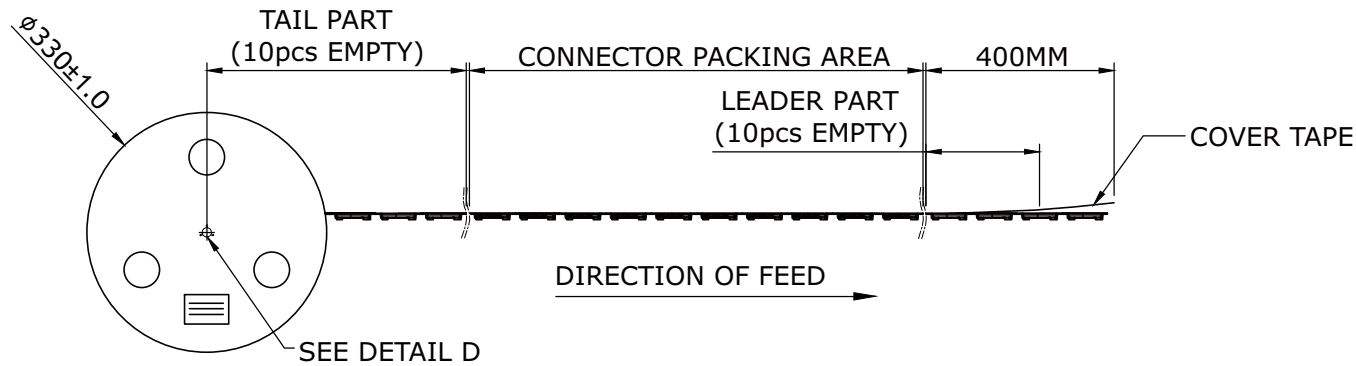
SWITCH CLOSED

BOTTOM CONTACT

16.14mm METAL FOOT

90°SMT

DESCRIPTION: Micro SIM Card Socket push-push type



### PACKAGING SPECIFICATION:

1. MATERIAL
  - 1.1 Embossed Carrier Tape: PS Black
  - 1.2 Top Cover Tape: PE  
20-80g (Peel Speed 300mm/Minute)
  - 1.3 Taping Reel: Plastic Paper
2. PACKING
  - 2.1 Quantity:  
800 Piece/Reel  
6 Reel/Inner Carton  
4800 Piece/Outer Carton
  - 2.2 Net Weight: 0.67g
  - 2.3 Gross Weight: 6.65kg/ carton

**MORETHANALL**  
PCB CONNECTORS  
Cable ASSEMBLIES

煜倫股份有限公司

www.morethanall.com

**RoHS Compliant**

DRAWING BY CY

CHECKED BY GENIUS

UNIT / mm SCALE 1 : 1

DATE

SIZE A4

TOLERANCES ARE

X. ± 0.50

.X ± 0.25

.XX ± 0.12

.XXX ±

ANG ±

PJECTION

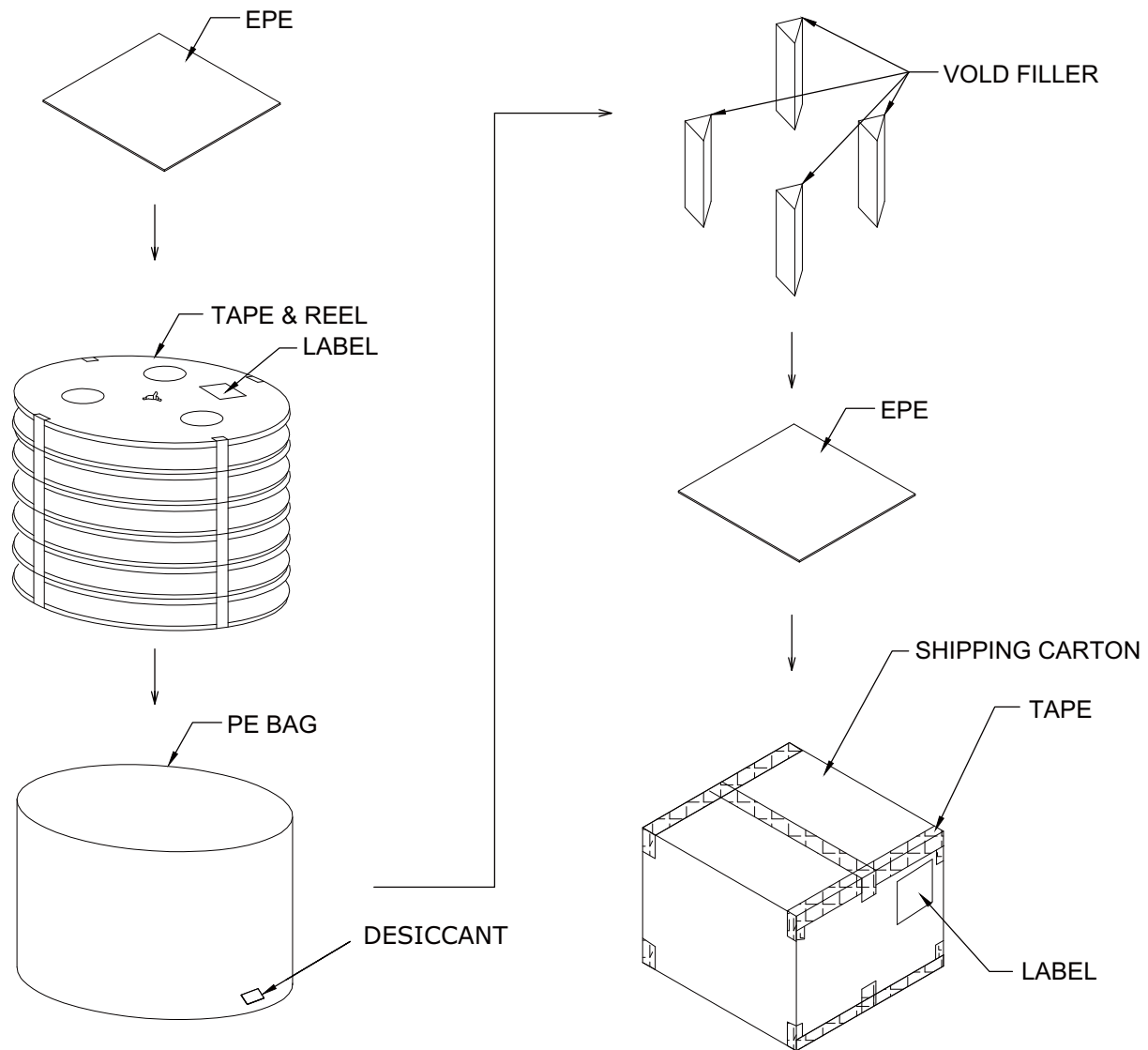
照片框

**ORDER INFORMATION**

MISCP-W16MBAR-08-LF

SERIES | | | | | LEADFREE  
| | | | | 08 WAY  
| | | | | REEL  
| | | | | SWITCH CLOSED  
| | | | | BOTTOM CONTACT  
90°SMT | | | | 16.14mm METAL FOOT

DESCRIPTION: Micro SIM Card Socket push-push type



**RoHS Compliant**

TOLERANCES ARE

**MORETHANALL**  
PCB CONNECTORS  
Cable ASSEMBLIES

DRAWING BY CY

X. ± 0.50

CHECKED BY GENIUS

.X ± 0.25

UNIT / mm

SCALE 1 : 1

.XX ± 0.12

DATE

.XXX ±

ANG ±

照片框

**ORDER INFORMATION**

MISCP-W16MBAR-08-LF

SERIES	LEADFREE
90°SMT	08 WAY
	REEL
	SWITCH CLOSED
	BOTTOM CONTACT
	16.14mm METAL FOOT

煜倫股份有限公司

www.morethanall.com

SIZE A4

PPOJECTION

DESCRIPTION: Micro SIM Card Socket push-push type