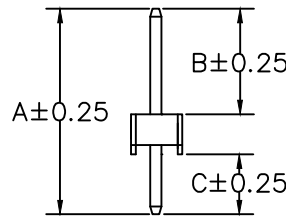
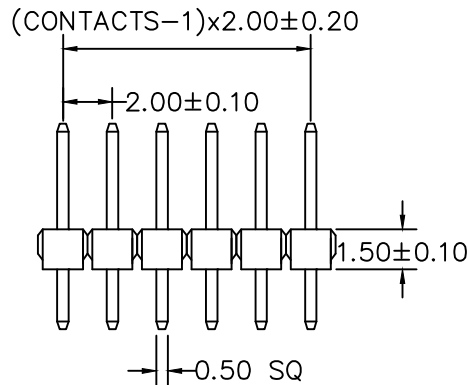


RECOMMENDED P.C.B LAYOUT



A: 9.60 mm    B: 4.50 mm    C: 3.60 mm

MATERIAL

HOUSING : NYLON 6T,UL94V-0  
CONTACT : COPPER ALLOYS  
PLATED : GOLD-FLASH  
COLOR : BLACK

SPECIFICATION

CURRENT: 1A  
OPERATING TEMPERATURE: -55 $\bar{U}$  TO +105 $\bar{U}$   
CONTACT RESISTANCE : 20 MILLIOHMS MAX  
INSULATION RESISTANCE : 5000 MEGAOHMS MIN  
DIELECTRIC STRENGTH : 1000 VAC MIN

CONTACTS	1X21
1X2	1X22
1X3	1X23
1X4	1X24
1X5	1X25
1X6	1X26
1X7	1X27
1X8	1X28
1X9	1X29
1X10	1X30
1X11	1X31
1X12	1X32
1X13	1X33
1X14	1X34
1X15	1X35
1X16	1X36
1X17	1X37
1X18	1X38
1X19	1X39
1X20	1X40

RoHS Compliant

TOLERANCES ARE

**MORETHANALL**  
PCB CONNECTORS  
Cable ASSEMBLIES

DRAWING BY CY

CHECKED BY GENIUS

UNIT / mm

SCALE 1:1

DATE

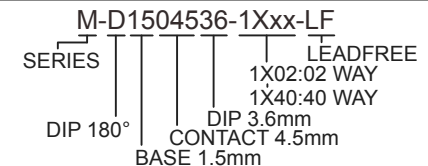
SIZE A4

X. ±  
.X ± 0.38  
.XX ± 0.25  
.XXX ±  
ANG ± 5°

PPOJECTION

照片框

ORDER INFORMATION



DESCRIPTION:

煜倫股份有限公司

www.morethanall.com