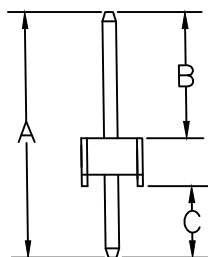
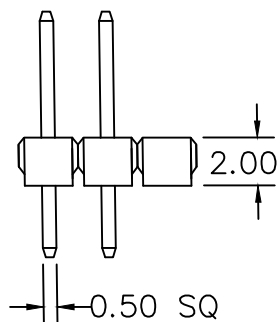


RECOMMENDED P.C.B LAYOUT

**MATERIAL**  
 HOUSING : THERMOPLASTIC UL94V-0  
 CONTACT : COPPER ALLOYS

**SPECIFICATION**  
 CURRENT: 1A  
 OPERATING TEMPERATURE: -55°C TO +105°C  
 CONTACT RESISTANCE : 20 MILLIOHMS MAX  
 INSULATION RESISTANCE : 5000 MEGAOHMS MIN  
 DIELECTRIC STRENGTH : 1000 VAC MIN



A: 8.70 mm B: 3.90 mm C: 2.80 mm

RoHS Compliant

TOLERANCES ARE

**MORETHANALL**  
 PCB CONNECTORS  
 Cable ASSEMBLIES

煜倫股份有限公司

www.morethanall.com

DRAWING BY CY

CHECKED BY GENIUS

UNIT / mm

SCALE 1:1

DATE

SIZE A4

X.±

.X±

.XX±

.XXX±

ANG±

PJECTION

照片框

ORDER INFORMATION

M-D-1X03E3-LF  
 SERIES | LEADFREE  
 | EMPTY #3  
 | 03 WAY  
 | DIP 180°

DESCRIPTION: