

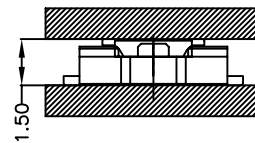
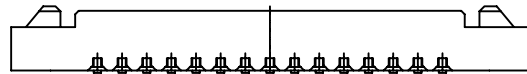
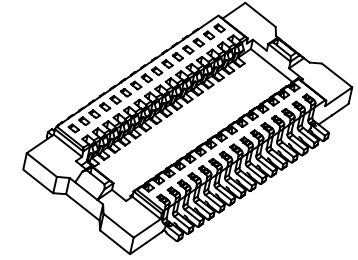
**NOTE:**

**Specifications:**

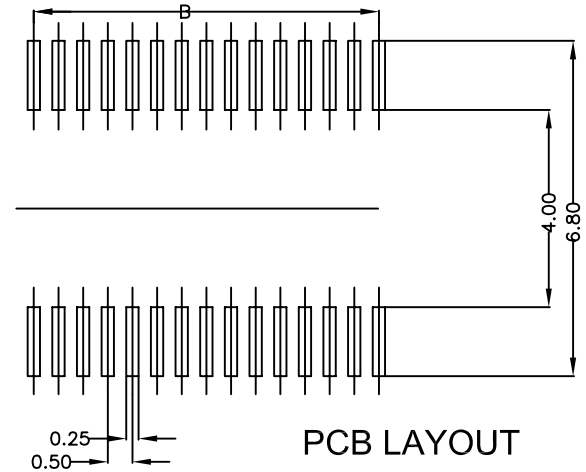
- 1). Current rating:0.5Amps
- 2).Voltage rating:AC,DC50V
- 3).Contact resistance:40mΩ
- 4).Insulation resistance:100MΩ
- 5).Withstanding voltage:AC 500Vr.m.s(for one minute)
- 6).Temperature range:-25°C~+85°C

**Material:**

- 1).Insulator:LCP UL94V-0
  - 2).Contact:Phosphor Bronze
  - 3).Plating:Gold Plating
- Mating High:1.5/2.0mm



MATED DRAWING (REF)  
SCALE: 5:1



PIN	A	B	C	D	PIN	A	B	C	D
30P	10.50	7.00	8.50		100P	28.00	24.50	26.00	
24P	9.00	5.50	7.00		80P	23.00	19.50	21.00	
22P	8.50	5.00	6.50		70P	20.50	17.00	18.50	
20P	8.00	4.50	6.00		60P	18.00	14.50	16.00	
16P	7.00	3.50	5.00		50P	15.50	12.00	13.50	
14P	6.50	3.00	4.50		40P	13.00	9.50	11.00	
12P	6.00	2.50	4.00		36P	12.00	8.50	10.00	
10P	5.50	2.00	3.50		34P	11.50	8.00	9.50	
					32P	11.00	7.50	9.00	

Stacking Height Variations	
	LGV-P03-xxx
LGV-S12X-xxx	1.5
LGV-S17X-xxx	2.0



PART NO. LGV-Sxxx-xxx

DWG NO. LGV-Sxxx-xxx

APPROVED BY CY

TOLERANCES ARE

FILE NO.

DRAWING BY

.X  
.XX  
.XXX  
AWG

DESCRIPTION: 0.5mm B TO B FEMALE

煜倫股份有限公司

UNIT / mm SCALE 1:1

PROJECTION

AREA	REVISIONS	HK	DATE