

SPECIFICATIONS

Electrical

Current Rating: 5A AC, DC

Voltage Rating: 250V AC, DC

Operating Temp.: -25°C ~ +85°C

Insulation Resistance: 1000MΩ/ min.

Dielectric Withstanding Voltage: 1500V AC/ min.

Contact Resistance: 10mΩ/ max.

Material

Material: Nylon66, UL94V-2

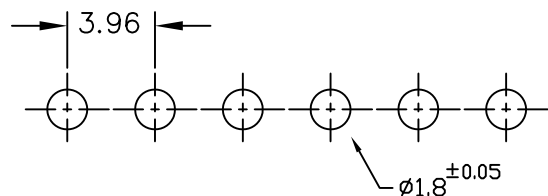
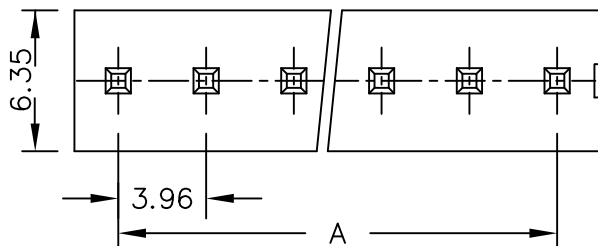
KXR-D33024752-xx-LF

02-16WAY

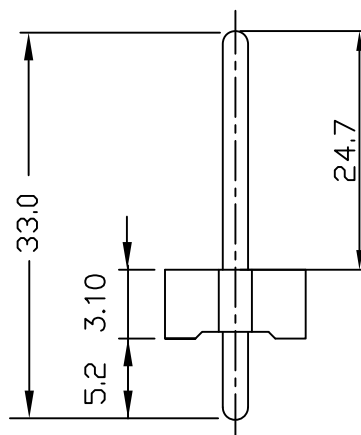
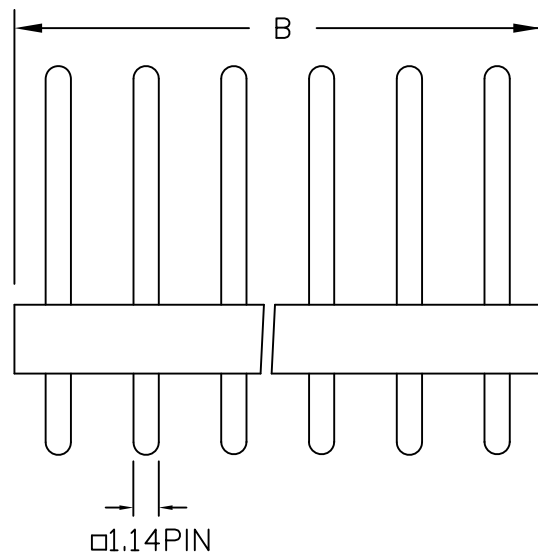
LEADFREE

RoHS Compliant

Poles	Dimension mm (in.)	
	A	B
2	3.96	8.00
3	7.92	12.00
4	11.88	15.90
5	15.84	20.00
6	19.80	24.00
7	23.76	27.90
8	27.72	31.90
9	31.68	35.80
10	35.64	39.90
11	39.60	43.90
12	43.56	47.70
13	47.52	51.80
14	51.48	55.70
15	55.44	59.70
16	59.40	63.80



PCB LAYOUT COMPONENT SIDE



MORETHANALL
CONNECTORS
ASSEMBLIES

煜倫股份有限公司

PART NO. KXR-D33024752-xx

DWG NO. KXR-D33024752-xx

FILE NO.

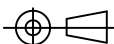
UNIT / mm

SCALE 1:1

CHECKED BY CY

DRAWING BY

PROJECTION



TOLERANCES ARE

.X ± 0.2
.XX ±
.XXX ±
AWG

DESCRIPTION:

3.96mm Wire-to-Board Header
Dip 180° Type

AREA

REVISIONS

HK

DATE