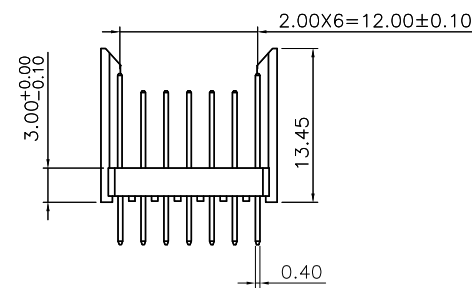
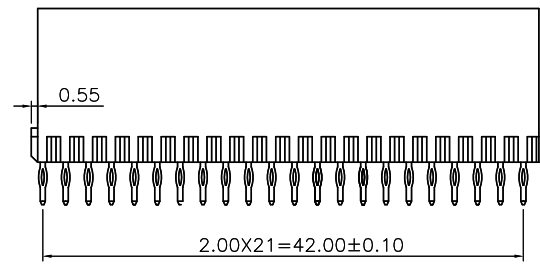


Material:
Housing: 30% Glass Filled PBT UL94V-0.
Contacts: Phosphor Bronze.

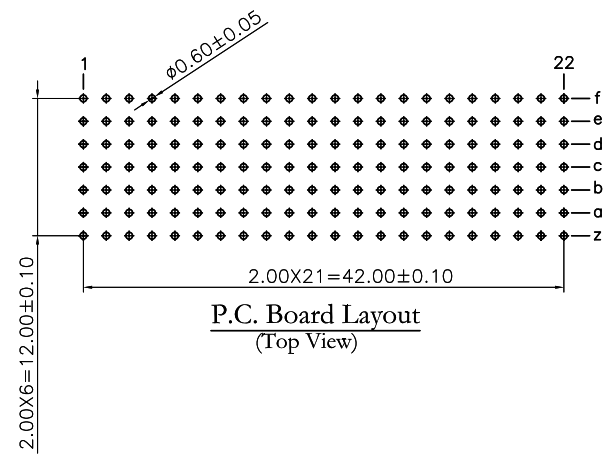
Electrical Characteristics:
Insulator Resistance: 1000MΩ min.
Contact Resistance: 20m Ω max.
Operating Temperature: -55°C ~ +125°C .

***RoHS Compliant**

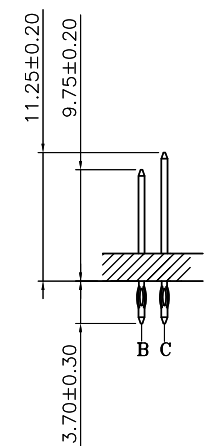


f	C	C	C	C	C	C	C	C	C	C	C	C	C	C	C	C	C	C	C	C		
e	B	B	B	B	B	B	B	B	B	B	B	B	B	B	B	B	B	B	B	B		
d	B	B	B	B	B	B	B	B	B	B	B	B	B	B	B	B	B	B	B	B		
c	B	B	B	B	B	B	B	B	B	B	B	B	B	B	B	B	B	B	B	B		
b	B	B	B	B	B	B	B	B	B	B	B	B	B	B	B	B	B	B	B	B		
a	B	B	B	B	B	B	B	B	B	B	B	B	B	B	B	B	B	B	B	B		
z	C	C	C	C	C	C	C	C	C	C	C	C	C	C	C	C	C	C	C	C		
	1	2	3	4	5	6	7	8	9	10	11	12	13	14	15	16	17	18	19	20	21	22

CONTACT LAYOUT



P.C. Board Layout
(Top View)



RoHS Compliant

TOLERANCES ARE

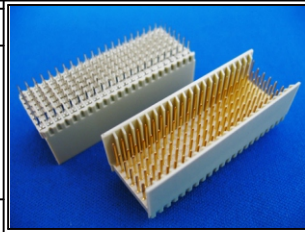
MORETHANALL
PCB CONNECTORS
Cable ASSEMBLIES

煜倫股份有限公司

www.morethanall.com

DRAWING BY CY
CHECKED BY GENIUS
UNIT / mm SCALE 1 : 1
DATE
SIZE A4 PPROJECTION

X, ±
.X ±
.XX ±
.XXX ±
ANG ±



ORDER INFORMATION

HM7B-PP03BC-154-LF
SERIES | | | | | LEADFREE
| | | | | 154 WAY
| | | | | BC TYPE
| | | | | 3.7mm
| | | | | PRESS FIT
MALE

DESCRIPTION: